

Recombinant Pulmonary Surfactant-Associated Protein D (SFTPD) Antibody

Rabbit Monoclonal Antibody [Clone SFTPD/7086R]

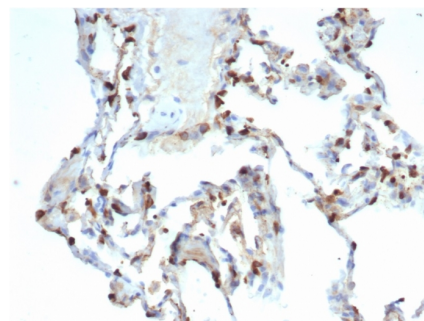
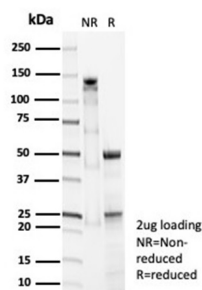
Catalog No	Format	Size
6441-RBM9-P0	Purified Ab with BSA and Azide at 200ug/ml	20 ug
6441-RBM9-P1	Purified Ab with BSA and Azide at 200ug/ml	100 ug
6441-RBM9-P1ABX	Purified Ab WITHOUT BSA and Azide at 1.0mg/ml	100 ug

Applications	Tested Dillution	Note
Immunohistochemistry (IHC)	1-2ug/ml	30 min at RT. Staining of formalin-fixed tissues requires heating tissue sections in 10mM Tris with 1mM EDTA, pH 9.0, for 45 min at 95°C followed by cooling at RT for 20 minutes

Product Details	
Clone	SFTPD/7086R
Gene Name	SFTPD
Immunogen	Recombinant fragment (around aa241-336) of human SFTPD protein (exact sequence is proprietary)
Host	Rabbit
Clonality	Monoclonal
Isotype / Light Chain	IgG / Kappa
Mol. Weight of Antigen	43kDa
Cellular Localization	Extracellular matrix, Extracellular space, Secreted, Surface film
Species Reactivity	Human
Positive Control	Epithelial cells of the lung, Skin, small intestine or bladder.

*Optimal dilution for a specific application should be determined.

Product Images for Recombinant Pulmonary Surfactant-Associated Protein D (SFTPD) Antibody



SDS-PAGE Analysis of Purified SFTPD Recombinant Rabbit Monoclonal Antibody (SFTPD/7086R). Confirmation of Purity and Integrity of Antibody.

Formalin-fixed, paraffin-embedded human lung carcinoma stained with Surfactant Protein D Recombinant Rabbit Monoclonal (SFTPD/7086R).

Specificity & Comments

Pulmonary surfactant is primarily responsible for lowering the surface tension at the air-liquid interface in the alveoli, a process that is essential for normal respiration. Pulmonary surfactant is a mixture of phospholipids and proteins, including four distinct surfactant-associated proteins (SPs), SP-A, SP-B, SP-C, SP-D. SP-B and SP-C are predominantly hydrophobic proteins that associate with lipids to promote the absorption of surfactant phospholipids and to reduce the surface tension in the alveoli. SP-A and SP-D are large multimeric proteins belonging to the family of calcium-dependent lectins, designated Collectins, which contribute to the innate immune system. Both SP-A and SP-D have been shown to protect against microbial challenge through binding to the lipid components of the bacterial cell wall and facilitating the rapid removal of microbials.

Limitations and Warranty

This antibody is available for research use only and is not approved for use in diagnosis. There are no warranties, expressed or implied, which extend beyond this description. Company is not liable for any personal injury or economic loss resulting from this product.

Supplied As

200ug/ml of Ab purified from Bioreactor Concentrate by Protein A/G. Prepared in 10mM PBS with 0.05% BSA & 0.05% azide. Also available WITHOUT BSA & azide at 1.0mg/ml.

Storage and Stability

Antibody with azide - store at 2 to 8 °C. Antibody without azide - store at -20 to -80 °C. Antibody is stable for 24 months. Non-hazardous. No MSDS required.

Research Areas

Cardiovascular, Immunology, Infectious Disease
