

## Recombinant Sex Hormone Binding Globulin (SHBG) Antibody

Mouse Monoclonal Antibody [Clone rSHBG/245]

Catalog No	Format	Size
6462-MSM2-P0	Purified Ab with BSA and Azide at 200ug/ml	20 ug
6462-MSM2-P1	Purified Ab with BSA and Azide at 200ug/ml	100 ug
6462-MSM2-P1ABX	Purified Ab WITHOUT BSA and Azide at 1.0mg/ml	100 ug

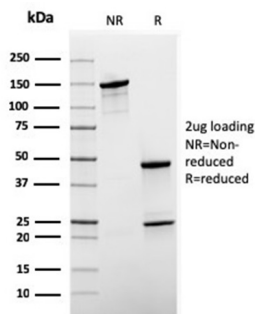
Applications	Tested Dillution	Note
Immunohistochemistry (IHC)	1-2ug/ml	30 min at RT. Staining of formalin-fixed tissues requires heating tissue sections in 10mM Tris with 1mM EDTA, pH 9.0, for 45 min at 95°C followed by cooling at RT for 20 minutes

### Product Details

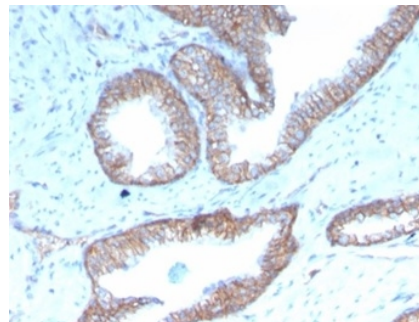
Clone	rSHBG/245
Gene Name	SHBG
Immunogen	Recombinant full-length human SHBG protein
Host	Mouse
Clonality	Monoclonal
Isotype / Light Chain	IgG1 / Kappa
Mol. Weight of Antigen	45kDa
Cellular Localization	Secreted
Species Reactivity	Human
Positive Control	Human liver, placenta or testis.

\*Optimal dilution for a specific application should be determined.

### Product Images for Recombinant Sex Hormone Binding Globulin (SHBG) Antibody



SDS-PAGE Analysis of Purified SHBG Recombinant Mouse Monoclonal Antibody (rSHBG/245). Confirmation of Integrity and Purity of Antibody.



Formalin-fixed, paraffin-embedded human prostate stained with SHBG Recombinant Mouse Monoclonal Antibody (rSHBG/245). HIER: Tris/EDTA, pH9.0, 45min. 2°C: HRP-polymer, 30min. DAB, 5min.

### Specificity & Comments

Recognizes a protein of 45kDa, identified as SHBG. It functions as an androgen transport protein, but may also be involved in receptor-mediated processes. Each dimer binds one molecule of steroid. It is specific for 5-alpha-dihydrotestosterone, testosterone, and 17-beta-estradiol. SHBG regulates the plasma metabolic clearance rate of steroid hormones by controlling their plasma concentration. In testis, it is synthesized by the Sertoli cells, secreted into the lumen of the seminiferous tubule and transported to the epididymis.

### Supplied As

200ug/ml of Ab purified from Bioreactor Concentrate by Protein A/G. Prepared in 10mM PBS with 0.05% BSA & 0.05% azide. Also available WITHOUT BSA & azide at 1.0mg/ml.

### Storage and Stability

Antibody with azide - store at 2 to 8 °C. Antibody without azide - store at -20 to -80 °C. Antibody is stable for 24 months. Non-hazardous. No MSDS required.

### Research Areas

Cardiovascular

## Limitations and Warranty

This antibody is available for research use only and is not approved for use in diagnosis. There are no warranties, expressed or implied, which extend beyond this description. Company is not liable for any personal injury or economic loss resulting from this product.

---