

## SOX11 (Mantle Cell Lymphoma Marker) Antibody

Mouse Monoclonal Antibody [Clone SOX11/7236]

Catalog No	Format	Size
6664-MSM6-P0	Purified Ab with BSA and Azide at 200ug/ml	20 ug
6664-MSM6-P1	Purified Ab with BSA and Azide at 200ug/ml	100 ug
6664-MSM6-P1ABX	Purified Ab WITHOUT BSA and Azide at 1.0mg/ml	100 ug

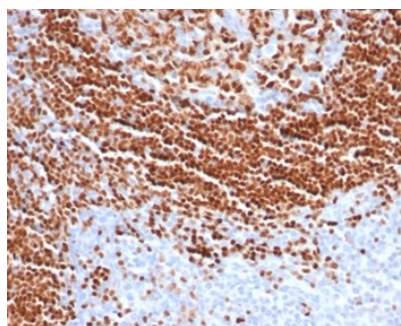
Applications	Tested Dillution	Note
Immunohistochemistry (IHC)	1-2ug/ml	30 min at RT. Staining of formalin-fixed tissues requires heating tissue sections in 10mM Tris with 1mM EDTA, pH 9.0, for 45 min at 95°C followed by cooling at RT for 20 minutes

### Product Details

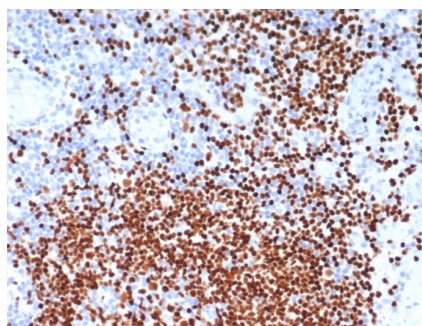
Clone	SOX11/7236
Gene Name	SOX11
Immunogen	Recombinant fragment (around aa50-200) of human SOX11 protein (exact sequence is proprietary)
Host	Mouse
Clonality	Monoclonal
Isotype / Light Chain	IgG1 / Kappa
Mol. Weight of Antigen	47kDa
Cellular Localization	Nucleus
Species Reactivity	Human
Positive Control	Human tonsil or mantle cell lymphoma (MCL).

\*Optimal dilution for a specific application should be determined.

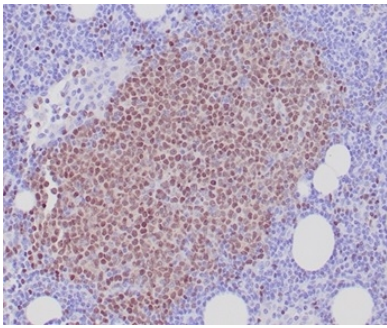
### Product Images for SOX11 (Mantle Cell Lymphoma Marker) Antibody



Formalin-fixed, paraffin-embedded human tonsil stained with SOX11 Mouse Monoclonal Antibody (SOX11/7236). HIER: Tris/EDTA, pH9.0, 45min. 2°C: HRP-polymer, 30min. DAB, 5min.



Formalin-fixed, paraffin-embedded human lymph node stained with SOX11 Mouse Monoclonal Antibody (SOX11/7236). HIER: Tris/EDTA, pH9.0, 45min. 2°C: HRP-polymer, 30min. DAB, 5min.



Formalin-fixed, paraffin-embedded human mantle cell lymphoma stained with SOX11 Mouse Monoclonal Antibody (SOX11/7236). HIER: Tris/EDTA, pH9.0, 45min. 2°C: HRP-polymer, 30min. DAB, 5min.

---

### Specificity & Comments

Recognizes a protein of ~47kDa, identified as SOX11. This MAb is highly specific and does not cross-react with other members of the SOX-family. Mantle cell lymphoma (MCL) accounts for 5% to 10% of mature B-cell neoplasms and is an aggressive disease genetically characterized by overexpression of Cyclin D1. Cyclin D1 overexpression is the hallmark of MCL. However, approximately 5%-10% of MCLs lack Cyclin D1 expression and may be misdiagnosed. Almost all Cyclin D1-positive as well as Cyclin D1-negative MCL, show overexpression of SOX-11. The detection of this transcription factor is a useful biomarker for identifying true cyclin D1-negative MCL.

---

### Limitations and Warranty

This antibody is available for research use only and is not approved for use in diagnosis. There are no warranties, expressed or implied, which extend beyond this description. Company is not liable for any personal injury or economic loss resulting from this product.

---

### Supplied As

200ug/ml of Ab purified from Bioreactor Concentrate by Protein A/G. Prepared in 10mM PBS with 0.05% BSA & 0.05% azide. Also available WITHOUT BSA & azide at 1.0mg/ml.

---

### Storage and Stability

Antibody with azide - store at 2 to 8 °C. Antibody without azide - store at -20 to -80 °C. Antibody is stable for 24 months. Non-hazardous. No MSDS required.

---

### Research Areas

Cardiovascular

---