

## CD43 (T-Cell Marker) Antibody

Mouse Monoclonal Antibody [Clone Bra7G]

Catalog No	Format	Size
6693-MSM4-P0	Purified Ab with BSA and Azide at 200ug/ml	20 ug
6693-MSM4-P1	Purified Ab with BSA and Azide at 200ug/ml	100 ug
6693-MSM4-P1BX	Purified Ab WITHOUT BSA at 1.0mg/ml	100 ug

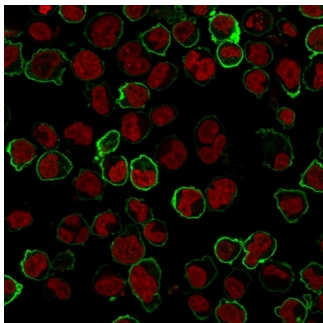
Applications	Tested Dillution	Note
Flow Cytometry (Flow)	1-2ug/million cells	
Immunofluorescence (IF)	1-3ug/ml	
Immunohistochemistry (IHC)	1-2ug/ml	30 min at RT. Staining of formalin-fixed tissues requires heating tissue sections in 10mM Tris with 1mM EDTA, pH 9.0, for 45 min at 95°C followed by cooling at RT for 20 minutes

### Product Details

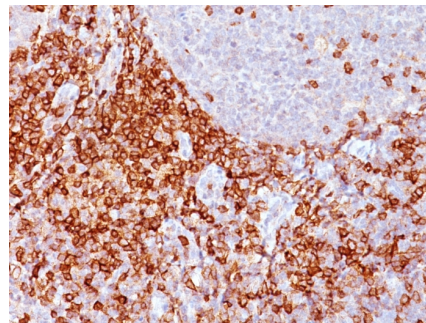
<b>Clone</b>	Bra7G
<b>Gene Name</b>	SPN
<b>Immunogen</b>	Immature pluripotent human leukemia K562 cells
<b>Host</b>	Mouse
<b>Clonality</b>	Monoclonal
<b>Isotype / Light Chain</b>	IgM / Kappa
<b>Mol. Weight of Antigen</b>	115 95 or 135kDa
<b>Cellular Localization</b>	Cell projection, Membrane, Microvillus, Nucleus, PML body, Uropodium
<b>Species Reactivity</b>	Human
<b>Positive Control</b>	K562 cells, Paracortex in a tonsil or a reactive lymph node.

\*Optimal dilution for a specific application should be determined.

### Product Images for CD43 (T-Cell Marker) Antibody



Immunofluorescence Analysis of K562 cells labeling CD43 with CD43 Monoclonal Antibody (Bra7G) followed by Goat anti-Mouse IgG-CF488 (Green). The nuclear counterstain is NucSpot-4E.



Formalin-fixed, paraffin-embedded human Spleen stained with CD43 Mouse Monoclonal Antibody (Bra7G).

### **Specificity & Comments**

It recognizes a cell surface glycoprotein of 95/115/135kDa (depending upon the extent of glycosylation), identified as CD43 (Workshop V). Epitope of MAb Bra7G is clearly different from that of MAb DF-T1, called b as opposed to a for DF-T1. 70-90% of T-cell lymphomas and from 22-37% of B-cell lymphomas express CD43. No reactivity has been observed with reactive B-cells. So a B-lineage population that co-expresses CD43 is highly likely to be a malignant lymphoma, especially a low-grade lymphoma, rather than a reactive B-cell population. When CD43 antibody is used in combination with anti-CD20, effective immunophenotyping of the lymphomas in formalin-fixed tissues can be obtained. Co-staining of a lymphoid infiltrate with anti-CD20 and anti-CD43 argues against a reactive process and favors a diagnosis of lymphoma.

---

### **Limitations and Warranty**

This antibody is available for research use only and is not approved for use in diagnosis. There are no warranties, expressed or implied, which extend beyond this description. Company is not liable for any personal injury or economic loss resulting from this product.

---

### **Supplied As**

200ug/ml of Ab Purified from Bioreactor Concentrate by PEG precipitation. Prepared in 10mM PBS with 0.05% BSA & 0.05% azide. Also available WITHOUT BSA & azide at 1.0mg/ml.

---

### **Storage and Stability**

Antibody with azide - store at 2 to 8°C. Antibody without azide - store at -20 to -80°C. Antibody is stable for 24 months. Non-hazardous. No MSDS required.

---

### **Research Areas**

Cardiovascular, B Cell Markers, Hematopoietic Stem Cells

---