

## Recombinant Spectrin Alpha 1 (Erythrocyte Marker) Antibody

Rabbit Monoclonal Antibody [Clone SPTA1/2939R]

Catalog No	Format	Size
6708-RBM5-P0	Purified Ab with BSA and Azide at 200ug/ml	20 ug
6708-RBM5-P1	Purified Ab with BSA and Azide at 200ug/ml	100 ug
6708-RBM5-P1ABX	Purified Ab WITHOUT BSA and Azide at 1.0mg/ml	100 ug

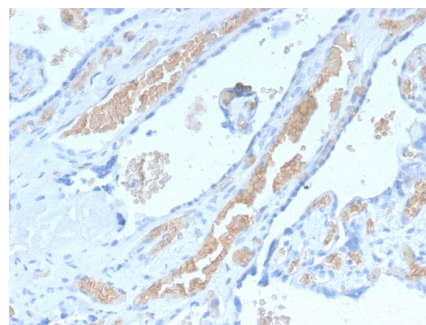
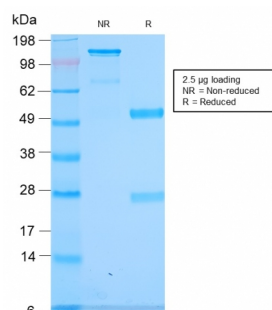
Applications	Tested Dillution	Note
Immunohistochemistry (IHC)	1-2ug/ml	30 min at RT. Staining of formalin-fixed tissues requires heating tissue sections in 10mM Tris with 1mM EDTA, pH 9.0, for 45 min at 95°C followed by cooling at RT for 20 minutes
Western Blot (WB)	2-4ug/ml	

### Product Details

<b>Clone</b>	SPTA1/2939R
<b>Gene Name</b>	SPTA1
<b>Immunogen</b>	Recombinant fragment of human SPTA (around aa356-475) (exact sequence is proprietary)
<b>Host</b>	Rabbit
<b>Clonality</b>	Monoclonal
<b>Isotype / Light Chain</b>	IgG / Kappa
<b>Mol. Weight of Antigen</b>	240kDa
<b>Cellular Localization</b>	Cell cortex, Cytoplasm, Cytoskeleton
<b>Species Reactivity</b>	Human
<b>Positive Control</b>	HeLa, Jurkat cells. Placenta or Tonsil., K562

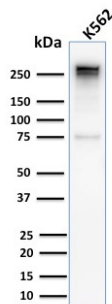
*\*Optimal dilution for a specific application should be determined.*

### Product Images for Recombinant Spectrin Alpha 1 (Erythrocyte Marker) Antibody

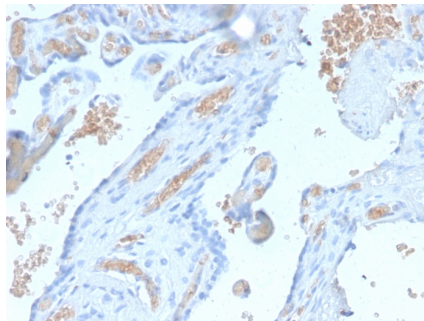


SDS-PAGE Analysis of Purified Spectrin alpha 1 Rabbit Recombinant Monoclonal (SPTA1/2939R). Confirmation of Integrity and Purity of Antibody.

Formalin-fixed, paraffin-embedded human Pancreas stained with Spectrin alpha 1 Rabbit Recombinant Monoclonal Antibody (SPTA1/2939R).



Western Blot Analysis of Human K562 cell lysate using Spectrin alpha 1 Rabbit Recombinant Monoclonal Antibody (SPTA1/2939R).



Formalin-fixed, paraffin-embedded human Pancreas stained with Spectrin alpha 1 Rabbit Recombinant Monoclonal Antibody (SPTA1/2939R).

### Specificity & Comments

Spectrin is an actin crosslinking and molecular scaffold protein that links the plasma membrane to the actin cytoskeleton, and functions in the determination of cell shape, arrangement of transmembrane proteins, and organization of organelles. Spectrins function as membrane organizers and stabilizers, composed of non-homologous ) are present in other somatic cells. The spectrin tetramers in erythrocytes act as barriers to lateral diffusion, but spectrin dimers seem to lack this function.

### Supplied As

200ug/ml of Ab Purified from Bioreactor Concentrate by Protein A/G. Prepared in 10mM PBS with 0.05% BSA & 0.05% azide. Also available WITHOUT BSA & azide at 1.0mg/ml.

### Storage and Stability

Antibody with azide - store at 2 to 8°C. Antibody without azide - store at -20 to -80°C. Antibody is stable for 24 months. Non-hazardous. No MSDS required.

### Research Areas

Autophagy, Developmental Biology, Signal Transduction

### Limitations and Warranty

This antibody is available for research use only and is not approved for use in diagnosis. There are no warranties, expressed or implied, which extend beyond this description. Company is not liable for any personal injury or economic loss resulting from this product.