

## Spectrin beta I (SPTB) Antibody

Mouse Monoclonal Antibody [Clone RG/26]

Catalog No	Format	Size
6710-MSM1-P0	Purified Ab with BSA and Azide at 200ug/ml	20 ug
6710-MSM1-P1	Purified Ab with BSA and Azide at 200ug/ml	100 ug
6710-MSM1-P1ABX	Purified Ab WITHOUT BSA and Azide at 1.0mg/ml	100 ug

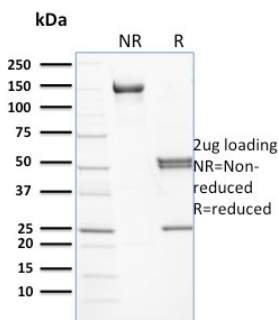
Applications	Tested Dillution	Note
Immunofluorescence (IF)	1-3ug/ml	
Immunohistochemistry (IHC)	1-2ug/ml	30 min at RT. Staining of formalin-fixed tissues requires heating tissue sections in 10mM Tris with 1mM EDTA, pH 9.0, for 45 min at 95°C followed by cooling at RT for 20 minutes
Western Blot (WB)	2-4ug/ml	

### Product Details

<b>Clone</b>	RG/26
<b>Gene Name</b>	SPTBN2
<b>Immunogen</b>	Red cell membranes
<b>Host</b>	Mouse
<b>Clonality</b>	Monoclonal
<b>Isotype / Light Chain</b>	IgG2a / Kappa
<b>Mol. Weight of Antigen</b>	246kDa
<b>Cellular Localization</b>	Cell cortex, Cytoplasm, Cytoskeleton
<b>Species Reactivity</b>	Human, Mouse, Rat
<b>Positive Control</b>	Jurkat whole cell lysate (WB). Human colon carcinoma tissue (IHC).

\*Optimal dilution for a specific application should be determined.

### Product Images for Spectrin beta I (SPTB) Antibody



SDS-PAGE Analysis of Purified Spectrin beta III Mouse Monoclonal Antibody (RG/26). Confirmation of Purity and Integrity of Antibody.

### Specificity & Comments

Spectrin is a cytoskeletal protein that lines the intracellular side of the plasma membrane of many cell types in pentagonal or hexagonal arrangements, forming a scaffolding and playing an important role in maintenance of plasma membrane integrity and cytoskeletal structure. In certain types of brain injury such as diffuse axonal injury, spectrin is irreversibly cleaved by the proteolytic enzyme calpain, destroying the cytoskeleton. Spectrin cleavage causes the membrane to form blebs and ultimately to be degraded, usually leading to cell death.

### Supplied As

200ug/ml of Ab Purified from Bioreactor Concentrate by Protein A/G. Prepared in 10mM PBS with 0.05% BSA & 0.05% azide. Also available WITHOUT BSA & azide at 1.0mg/ml.

### Storage and Stability

Antibody with azide - store at 2 to 8°C. Antibody without azide - store at -20 to -80°C. Antibody is stable for 24 months. Non-hazardous. No MSDS required.

### Research Areas

Developmental Biology, Signal Transduction

## Limitations and Warranty

This antibody is available for research use only and is not approved for use in diagnosis. There are no warranties, expressed or implied, which extend beyond this description. Company is not liable for any personal injury or economic loss resulting from this product.

---