



## Spectrin beta III (SPTBN2) Antibody

Mouse Monoclonal Antibody [Clone SPTBN2/1584]

Catalog No	Format	Size
6712-MSM4-P0	Purified Ab with BSA and Azide at 200ug/ml	20 ug
6712-MSM4-P1	Purified Ab with BSA and Azide at 200ug/ml	100 ug
6712-MSM4-P1ABX	Purified Ab WITHOUT BSA and Azide at 1.0mg/ml	100 ug

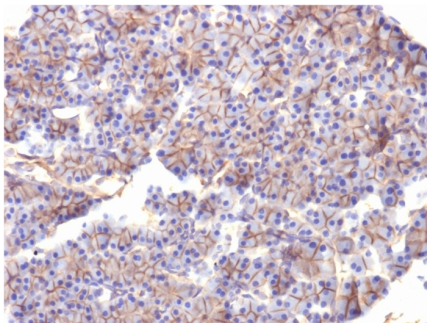
Applications	Tested Dillution	Note
Flow Cytometry (Flow)	1-2ug/million cells	
Immunofluorescence (IF)	1-3ug/ml	
Immunohistochemistry (IHC)	1-2ug/ml	30 min at RT. Staining of formalin-fixed tissues requires heating tissue sections in 10mM Tris with 1mM EDTA, pH 9.0, for 45 min at 95°C followed by cooling at RT for 20 minutes
Western Blot (WB)	2-4ug/ml	

### Product Details

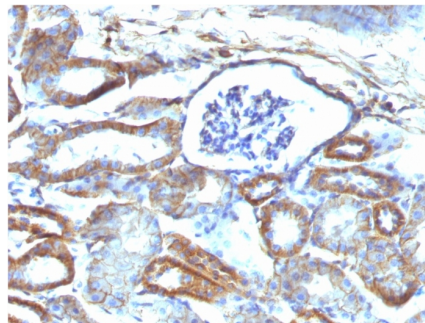
<b>Clone</b>	SPTBN2/1584
<b>Gene Name</b>	SPTBN2
<b>Immunogen</b>	Recombinant fragment (around aa356-475) of human SPTBN2 protein (exact sequence is proprietary)
<b>Host</b>	Mouse
<b>Clonality</b>	Monoclonal
<b>Isotype / Light Chain</b>	IgG1 / Kappa
<b>Mol. Weight of Antigen</b>	246kDa
<b>Cellular Localization</b>	Cell cortex, Cytoplasm, Cytoskeleton
<b>Species Reactivity</b>	Human, Mouse, Rat
<b>Positive Control</b>	HeLa cells. Pancreas or Liver., PANC-1

\*Optimal dilution for a specific application should be determined.

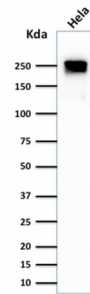
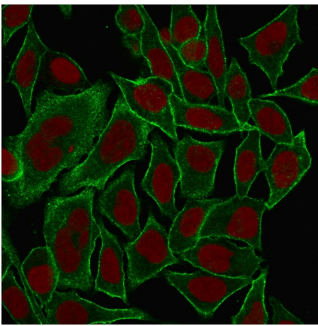
### Product Images for Spectrin beta III (SPTBN2) Antibody



Formalin-fixed, paraffin-embedded Rat Pancreas stained with Spectrin beta III Monoclonal Antibody (SPTBN2/1584).

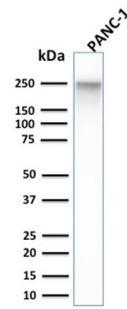
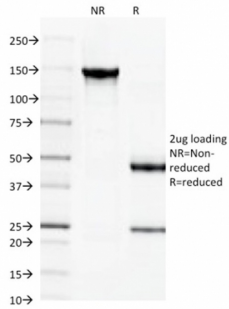


Formalin-fixed, paraffin-embedded Mouse Kidney stained with Spectrin beta III Monoclonal Antibody (SPTBN2/1584).



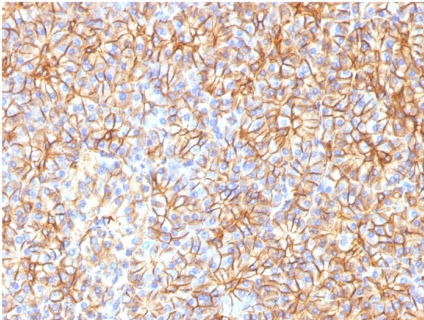
Immunofluorescence Analysis of MeOH-fixed HeLa cells labeling Spectrin beta III with Spectrin beta III Mouse Monoclonal Antibody (SPTBN2/1778) followed by Goat anti-Mouse IgG-CF488 (Green). The nuclear counterstain is Reddot (Red).

Western Blot Analysis of HeLa cell lysate using Spectrin beta III Monoclonal Antibody (SPTBN2/1584).



SDS-PAGE Analysis Purified Spectrin beta III Monoclonal Antibody (SPTBN2/1584). Confirmation of Integrity and Purity of Antibody.

Western Blot Analysis of PANC-1 cell lysate using Spectrin beta III Monoclonal Antibody (SPTBN2/1584).



Formalin-fixed, paraffin-embedded human Pancreas stained with Spectrin beta III Monoclonal Antibody (SPTBN2/1584).

### Specificity & Comments

Spectrin is an actin binding protein that is a major component of the plasma membrane skeleton. Spectrins function as membrane organizers and stabilizers by forming dimers, tetramers and higher polymers. Vertebrate spectrins have two alpha-subunits (alpha-I/alpha-II) four beta-subunits (beta-I-beta-IV) and a beta-H subunit creating diversity and specialization of function. Spectrin III is highly expressed in brain, kidney, pancreas and liver, and at lower levels in lung and placenta. Spectrin beta 3 is primarily expressed in nervous tissues with highest expression levels in the cerebellum, where it is found in Purkinje cell soma and dendrites.

### Supplied As

200ug/ml of Ab Purified from Bioreactor Concentrate by Protein A/G. Prepared in 10mM PBS with 0.05% BSA & 0.05% azide. Also available WITHOUT BSA & azide at 1.0mg/ml.

### Storage and Stability

Antibody with azide - store at 2 to 8°C. Antibody without azide - store at -20 to -80°C. Antibody is stable for 24 months. Non-hazardous. No MSDS required.

### Research Areas

Developmental Biology, Immunology, Signal Transduction

### Limitations and Warranty

This antibody is available for research use only and is not approved for use in diagnosis. There are no warranties, expressed or implied, which extend beyond this description. Company is not liable for any personal injury or economic loss resulting from this product.