

Transgelin (SM22-alpha) Antibody

Mouse Monoclonal Antibody [Clone SPM606]

Catalog No	Format	Size
6876-MSM1X-P0	Purified Ab with BSA and Azide at 200ug/ml	20 ug
6876-MSM1X-P1	Purified Ab with BSA and Azide at 200ug/ml	100 ug
6876-MSM1X-P1ABX	Purified Ab WITHOUT BSA at 1.0mg/ml	100 ug

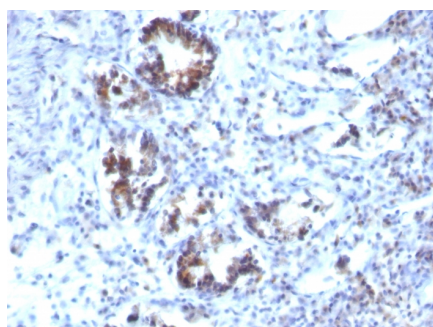
Applications	Tested Dillution	Note
Flow Cytometry (Flow)	1-2ug/million cells	
Immunofluorescence (IF)	1-3ug/ml	
Immunohistochemistry (IHC)	1-2ug/ml	30 min at RT. Staining of formalin-fixed tissues requires heating tissue sections in 10mM Tris with 1mM EDTA, pH 9.0, for 45 min at 95°C followed by cooling at RT for 20 minutes

Product Details

Clone	SPM606
Gene Name	TAGLN
Immunogen	Recombinant full-length human transgelin (TAGLN) protein.
Host	Mouse
Clonality	Monoclonal
Isotype / Light Chain	IgG1 / Kappa
Mol. Weight of Antigen	22kDa
Cellular Localization	Cytoplasm
Species Reactivity	Cow, Human, Mouse, Pig, Rabbit
Positive Control	Hs68 or WI 38 cells. Colon carcinoma., U-2 OS

*Optimal dilution for a specific application should be determined.

Product Images for Transgelin (SM22-alpha) Antibody



Formalin-fixed, paraffin-embedded human Colon Carcinoma stained with Transgelin Monoclonal Antibody (SPM606)

Specificity & Comments

This MAbs recognizes a 22kDa protein, identified as Transgelin, also designated SM22-alpha. It may cross-react with SM22-beta. Transgelin is expressed abundantly in smooth muscle cells. The human transgelin gene encodes a 201 amino acid protein that contains nuclear factor-binding motifs known to regulate transcription in smooth muscle. During embryogenesis, transgelin is expressed in smooth, cardiac and skeletal muscle, but is restricted during late fetal development and adulthood to all vascular and visceral smooth muscle cells and low levels of expression in heart. Transgelin is down regulated in several transformed cell lines, indicating that a reduction of transgelin expression may be an early indicator of the onset of transformation. Transgelin also binds Actin, causing Actin fibers to gel within minutes of binding. Binding of transgelin to Actin occurs at a ratio of 1:6 Actin monomers.

Limitations and Warranty

This antibody is available for research use only and is not approved for use in diagnosis. There are no warranties, expressed or implied, which extend beyond this description. Company is not liable for any personal injury or economic loss resulting from this product.

Supplied As

200ug/ml of Ab Purified from Bioreactor Concentrate by Protein A/G. Prepared in 10mM PBS with 0.05% BSA & 0.05% azide. Also available WITHOUT BSA & azide at 1.0mg/ml.

Storage and Stability

Antibody with azide - store at 2 to 8°C. Antibody without azide - store at -20 to -80°C. Antibody is stable for 24 months. Non-hazardous. No MSDS required.

Research Areas

Cardiovascular, Mitochondria Marker
