

## pS2 / pNR-2 / TFF1 (Estrogen-Regulated Protein) Antibody

Mouse Monoclonal Antibody [Clone SPM313]

Catalog No	Format	Size
7031-MSM1XX-P0	Purified Ab with BSA and Azide at 200ug/ml	20 ug
7031-MSM1XX-P1	Purified Ab with BSA and Azide at 200ug/ml	100 ug
7031-MSM1XX-P1ABX	Purified Ab WITHOUT BSA and Azide at 1.0mg/ml	100 ug

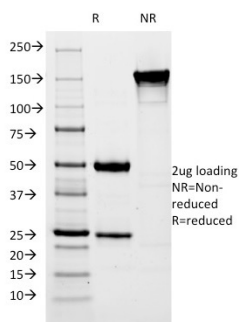
Applications	Tested Dillution	Note
Immunohistochemistry (IHC)	1-2ug/ml	30 min at RT. Staining of formalin-fixed tissues requires heating tissue sections in 10mM Tris with 1mM EDTA, pH 9.0, for 45 min at 95°C followed by cooling at RT for 20 minutes

### Product Details

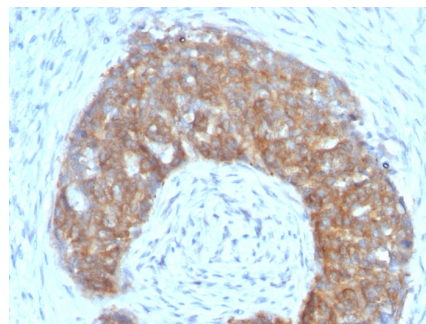
<b>Clone</b>	SPM313
<b>Gene Name</b>	TFF1
<b>Immunogen</b>	A synthetic peptide (around aa 57-84) of human pS2/TFF1 polypeptide (exact sequence is proprietary)
<b>Host</b>	Mouse
<b>Clonality</b>	Monoclonal
<b>Isotype / Light Chain</b>	IgG1 / Kappa
<b>Mol. Weight of Antigen</b>	6.5kDa
<b>Cellular Localization</b>	Secreted
<b>Species Reactivity</b>	Cynomolgus Monkey, Human
<b>Positive Control</b>	especially those that are also positive for estrogen and/or progesterone receptor., Spent medium of MCF-7 cells, treated with estrogen. Normal stomach. About 60% of breast carcinomas are positive for pS2

\*Optimal dilution for a specific application should be determined.

### Product Images for pS2 / pNR-2 / TFF1 (Estrogen-Regulated Protein) Antibody



SDS-PAGE Analysis of Purified pS2 Mouse Monoclonal Antibody (SPM313). Confirmation of Purity and Integrity of Antibody.



Formalin-fixed, paraffin-embedded human Ovarian Carcinoma stained with pS2 Mouse Monoclonal Antibody (SPM313).

### **Specificity & Comments**

It recognizes a polypeptide of 6.5kDa, identified as pS2 estrogen-regulated protein. Its epitope is localized between aa57-84 of human pS2 protein. pS2 is a trefoil peptide. Trefoil peptides are protease resistant molecules secreted throughout the gut that play a role in mucosal healing. These peptides contain three intra-chain disulfide bonds, forming the trefoil motif, or P-domain. pS2 is known to form dimers and this dimerization is thought to play a role in its protective and healing properties. About 60% of breast carcinomas are positive for pS2. Staining is cytoplasmic, often with localization to the Golgi apparatus. pS2 is shown to be localized in normal stomach mucosa, gastric fluid, goblet cells in the colon and small intestine, and in ulcerations of the gastrointestinal tract. Several studies have shown that pS2 is primarily expressed in estrogen receptor-positive breast tumors and it may define a subset of estrogen-dependent tumors that displays an increased likelihood of response to endocrine therapy.

---

### **Limitations and Warranty**

This antibody is available for research use only and is not approved for use in diagnosis. There are no warranties, expressed or implied, which extend beyond this description. Company is not liable for any personal injury or economic loss resulting from this product.

---

### **Supplied As**

200ug/ml of Ab Purified from Bioreactor Concentrate by Protein A/G. Prepared in 10mM PBS with 0.05% BSA & 0.05% azide. Also available WITHOUT BSA & azide at 1.0mg/ml.

---

### **Storage and Stability**

Antibody with azide - store at 2 to 8°C. Antibody without azide - store at -20 to -80°C. Antibody is stable for 24 months. Non-hazardous. No MSDS required.

---

### **Research Areas**

Signal Transduction

---