

CD71 / Transferrin Receptor (TFRC) Antibody

Mouse Monoclonal Antibody [Clone 66IG10]

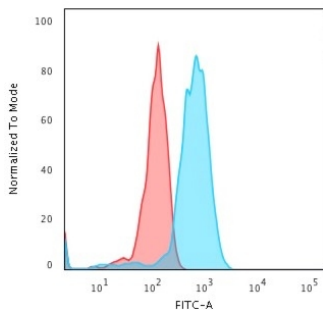
Catalog No	Format	Size
7037-MSM2-P0	Purified Ab with BSA and Azide at 200ug/ml	20 ug
7037-MSM2-P1	Purified Ab with BSA and Azide at 200ug/ml	100 ug
7037-MSM2-P1ABX	Purified Ab WITHOUT BSA and Azide at 1.0mg/ml	100 ug

Applications	Tested Dillution	Note
Flow Cytometry (Flow)	1-2ug/million cells	
Immunofluorescence (IF)	1-3ug/ml	

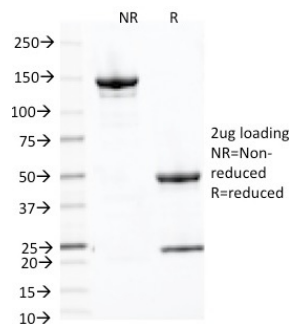
Product Details	
Clone	66IG10
Gene Name	TFRC
Immunogen	Human thymocytes (T-cells)
Host	Mouse
Clonality	Monoclonal
Isotype / Light Chain	IgG1 / Kappa
Mol. Weight of Antigen	85-95kDa (monomer); 190kDa (dimer)
Cellular Localization	Cell membrane, Cell surface, Melanosome, Secreted
Species Reactivity	Human
Positive Control	CCRF-CEM, Jurkat or K562 cells.

*Optimal dilution for a specific application should be determined.

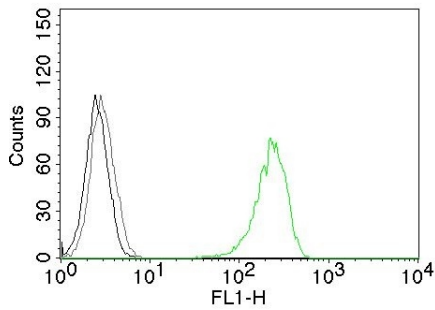
Product Images for CD71 / Transferrin Receptor (TFRC) Antibody



Flow cytometric analysis of Jurkat cells. CD71 Mouse Monoclonal Antibody (66IG10) followed by goat anti-Mouse IgG-CF488 (blue); isotype control (red).



SDS-PAGE Analysis Purified CD71 Mouse Monoclonal Antibody (66IG10). Confirmation of Purity and Integrity of Antibody.



Flow cytometric analysis of CD71 on K562 cells. Black: cells alone; Grey: Isotype Control; Green: AF488-labeled CD71 Mouse Monoclonal Antibody (66IG10).

Specificity & Comments

It recognizes a ~90-95kDa protein which is identified as cell surface transferrin receptor (CD71), a disulfide-bonded homodimeric glycoprotein of 180-190kDa. This MAb is highly specific to CD71 and shows no cross-reaction with other related proteins. Its epitope is localized in the extracellular domain of CD71. Ligand for transferrin receptor is the serum iron transport protein, transferrin. This receptor is broadly distributed in carcinomas, sarcomas, leukemias, and lymphomas. CD71/Transferrin receptor has been reported to be associated with cell proliferation in both normal and neoplastic tissues and useful in predicting clinical behavior or response to therapy in a number of malignancies including breast cancer.

Limitations and Warranty

This antibody is available for research use only and is not approved for use in diagnosis. There are no warranties, expressed or implied, which extend beyond this description. Company is not liable for any personal injury or economic loss resulting from this product.

Supplied As

200ug/ml of Ab Purified from Bioreactor Concentrate by Protein A/G. Prepared in 10mM PBS with 0.05% BSA & 0.05% azide. Also available WITHOUT BSA & azide at 1.0mg/ml.

Storage and Stability

Antibody with azide - store at 2 to 8°C. Antibody without azide - store at -20 to -80°C. Antibody is stable for 24 months. Non-hazardous. No MSDS required.

Research Areas

Cancer, Cardiovascular, Signal Transduction