

## Thyroglobulin (Thyroidal Cell Marker) Antibody

Mouse Monoclonal Antibody [Clone 2H11]

Catalog No	Format	Size
7038-MSM1-P0	Purified Ab with BSA and Azide at 200ug/ml	20 ug
7038-MSM1-P1	Purified Ab with BSA and Azide at 200ug/ml	100 ug
7038-MSM1-P1ABX	Purified Ab WITHOUT BSA and Azide at 1.0mg/ml	100 ug

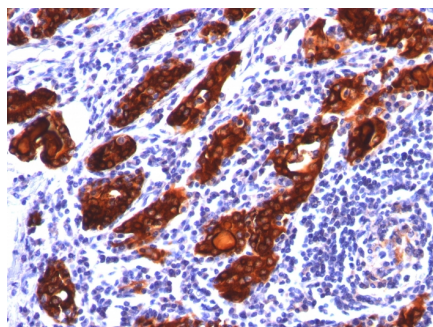
Applications	Tested Dillution	Note
Flow Cytometry (Flow)	1-2ug/million cells	
Immunohistochemistry (IHC)	1-2ug/ml	30 min at RT. Staining of formalin-fixed tissues requires heating tissue sections in 10mM Tris with 1mM EDTA, pH 9.0, for 45 min at 95°C followed by cooling at RT for 20 minutes

### Product Details

<b>Clone</b>	2H11
<b>Gene Name</b>	TG
<b>Immunogen</b>	Human thyroid follicular cells
<b>Host</b>	Mouse
<b>Clonality</b>	Monoclonal
<b>Isotype / Light Chain</b>	IgG1 / Kappa
<b>Mol. Weight of Antigen</b>	660kDa (Dimeric Form)
<b>Cellular Localization</b>	Secreted
<b>Species Reactivity</b>	Human, Mouse, Rat
<b>Positive Control</b>	Thyroid.

*\*Optimal dilution for a specific application should be determined.*

### Product Images for Thyroglobulin (Thyroidal Cell Marker) Antibody



Formalin-fixed, paraffin-embedded human Thyroid stained with Thyroglobulin Monoclonal Antibody (2H11).

### **Specificity & Comments**

MAB 2H11 reacts with a partially defined epitope of human thyroglobulin. This epitope is different from the epitope recognized by MAB 6E1. Thyroglobulin is a 660kDa dimeric pre-protein with multiple glycosylation sites. It is produced by and processed within the thyroid gland to produce the hormone thyroxine and triiodothyronine. Prior to forming dimers, thyroglobulin monomers undergo conformational maturation in the endoplasmic reticulum. The vast majority of follicular carcinomas of the thyroid will give positive immunoreactivity for anti-thyroglobulin even though sometimes only focally. Poorly differentiated carcinomas of the thyroid are frequently anti-thyroglobulin negative. Adenocarcinomas of other-than-thyroid origin do not react with this antibody. This antibody is useful in identification of thyroid carcinoma of the papillary and follicular types. Presence of thyroglobulin in metastatic lesions establishes the thyroid origin of tumor. Anti-thyroglobulin, combined with anti-calcitonin, can identify medullary carcinomas of the thyroid. Furthermore, anti-thyroglobulin, combined with anti-TTF1, can be a reliable marker to differentiate between primary thyroid and lung neoplasms.

---

### **Limitations and Warranty**

This antibody is available for research use only and is not approved for use in diagnosis. There are no warranties, expressed or implied, which extend beyond this description. Company is not liable for any personal injury or economic loss resulting from this product.

---

### **Supplied As**

200ug/ml of Ab Purified from Bioreactor Concentrate by Protein A/G. Prepared in 10mM PBS with 0.05% BSA & 0.05% azide. Also available WITHOUT BSA & azide at 1.0mg/ml.

---

### **Storage and Stability**

Antibody with azide - store at 2 to 8°C. Antibody without azide - store at -20 to -80°C. Antibody is stable for 24 months. Non-hazardous. No MSDS required.

---