

Recombinant Thyroglobulin (Thyroidal Cell Marker) Antibody

Rabbit Monoclonal Antibody [Clone TGB/1968R]

Catalog No	Format	Size
7038-RBM8-P0	Purified Ab with BSA and Azide at 200ug/ml	20 ug
7038-RBM8-P1	Purified Ab with BSA and Azide at 200ug/ml	100 ug
7038-RBM8-P1ABX	Purified Ab WITHOUT BSA and Azide at 1.0mg/ml	100 ug

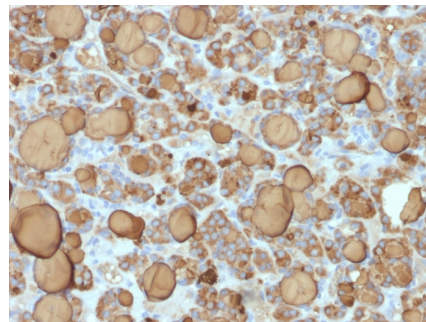
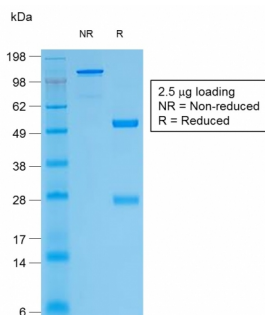
Applications	Tested Dillution	Note
Immunohistochemistry (IHC)	1-2ug/ml	30 min at RT. Staining of formalin-fixed tissues requires heating tissue sections in 10mM Tris with 1mM EDTA, pH 9.0, for 45 min at 95°C followed by cooling at RT for 20 minutes

Product Details

Clone	TGB/1968R
Gene Name	TG
Immunogen	Recombinant full-length human Thyroglobulin protein
Host	Rabbit
Clonality	Monoclonal
Isotype / Light Chain	IgG / Kappa
Mol. Weight of Antigen	660kDa (Dimeric Form)
Cellular Localization	Secreted
Species Reactivity	Human
Positive Control	Thyroid.

*Optimal dilution for a specific application should be determined.

Product Images for Recombinant Thyroglobulin (Thyroidal Cell Marker) Antibody



SDS-PAGE Analysis of Purified Thyroglobulin Rabbit Recombinant Monoclonal Antibody (TGB/1968R). Confirmation of Purity and Integrity of Antibody.

Formalin-fixed, paraffin-embedded human Thyroid Carcinoma stained with Thyroglobulin Rabbit Recombinant Monoclonal Antibody (TGB/1968R).

Specificity & Comments

Thyroglobulin is a 660kDa dimeric pre-protein with multiple glycosylation sites. It is produced by and processed within the thyroid gland to produce the hormone thyroxine and triiodothyronine. Prior to forming dimers, thyroglobulin monomers undergo conformational maturation in the endoplasmic reticulum. The vast majority of follicular carcinomas of the thyroid will give positive immunoreactivity for anti-thyroglobulin even though sometimes only focally. Poorly differentiated carcinomas of the thyroid are frequently anti-thyroglobulin negative. Adenocarcinomas of other-than-thyroid origin do not react with this antibody. This antibody is useful in identification of thyroid carcinoma of the papillary and follicular types. Presence of thyroglobulin in metastatic lesions establishes the thyroid origin of tumor. Anti-thyroglobulin, combined with anti-calcitonin, can identify medullary carcinomas of the thyroid. Furthermore, anti-thyroglobulin, combined with anti-TTF1, can be a reliable marker to differentiate between primary thyroid and lung neoplasms.

Limitations and Warranty

This antibody is available for research use only and is not approved for use in diagnosis. There are no warranties, expressed or implied, which extend beyond this description. Company is not liable for any personal injury or economic loss resulting from this product.

Supplied As

200ug/ml of Ab Purified from Bioreactor Concentrate by Protein A/G. Prepared in 10mM PBS with 0.05% BSA & 0.05% azide. Also available WITHOUT BSA & azide at 1.0mg/ml.

Storage and Stability

Antibody with azide - store at 2 to 8°C. Antibody without azide - store at -20 to -80°C. Antibody is stable for 24 months. Non-hazardous. No MSDS required.
