

## Recombinant TIMP1 (Colorectal and Lymph Node Metastasis Marker) Antibody

Rabbit Monoclonal Antibody [Clone TIMP1/1944R]

Catalog No	Format	Size
7076-RBM4-P0	Purified Ab with BSA and Azide at 200ug/ml	20 ug
7076-RBM4-P1	Purified Ab with BSA and Azide at 200ug/ml	100 ug
7076-RBM4-P1ABX	Purified Ab WITHOUT BSA and Azide at 1.0mg/ml	100 ug

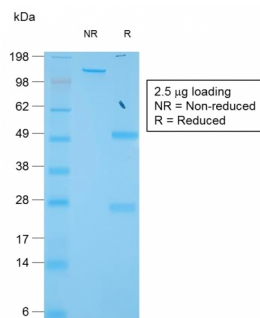
Applications	Tested Dillution	Note
--------------	------------------	------

### Product Details

<b>Clone</b>	TIMP1/1944R
<b>Gene Name</b>	TIMP1
<b>Immunogen</b>	Recombinant human full-length TIMP1 protein
<b>Host</b>	Rabbit
<b>Clonality</b>	Monoclonal
<b>Isotype / Light Chain</b>	IgG / Kappa
<b>Mol. Weight of Antigen</b>	23kDa
<b>Cellular Localization</b>	Secreted
<b>Species Reactivity</b>	Human
<b>Positive Control</b>	293 cell extract or rat brain lysate. Human colon carcinoma.

\*Optimal dilution for a specific application should be determined.

### Product Images for Recombinant TIMP1 (Colorectal and Lymph Node Metastasis Marker) Antibody



SDS-PAGE Analysis of Purified TIMP1 Rabbit Recombinant Monoclonal Antibody (TIMP1/1944R).

### Specificity & Comments

TIMP-1, TIMP-2, TIMP-3 and TIMP-4 (for tissue inhibitor of metalloproteinases -1, -2, -3 and -4) complex with metalloproteinases such as collagenases, gelatinases and stromelysins, resulting in irreversible inactivation of the metalloproteinase. TIMP-1 is identical to EPA (erythroid-potential activity). PTH has been shown to be a regulator of TIMP-2 in osteoblastic cells. TIMP-3 may be involved in regulating trophoblastic invasion of the uterus as well as in regulating remodeling of the extracellular matrix during the folding of epithelia, and in the formation, branching and expansion of epithelial tubes. TIMP-4 is most highly expressed in heart tissues. Studies have demonstrated that TIMP1 is useful as a biomarker for early detection of colorectal cancer, outperforming CEA. Additionally, TIMP1 studies have demonstrated its role in CRC tumorigenesis, as well as observing its overexpression in metastatic lymph nodes.

### Supplied As

200ug/ml of Ab Purified by Protein A. Prepared in 10mM PBS with 0.05% BSA & 0.05% azide. Also available WITHOUT BSA & azide at 1.0mg/ml.

### Storage and Stability

Antibody with azide - store at 2 to 8°C. Antibody without azide - store at -20 to -80°C. Antibody is stable for 24 months. Non-hazardous. No MSDS required.

### Research Areas

Cardiovascular, Immunology, AKT Signaling, Angiogenesis, Cytokine Signaling

### Limitations and Warranty

This antibody is available for research use only and is not approved for use in diagnosis. There are no warranties, expressed or implied, which extend beyond this description. Company is not liable for any personal injury or economic loss resulting from this product.