

## TLE1 (Synovial Sarcoma Marker) Antibody

Mouse Monoclonal Antibody [Clone TLE1/2085]

| Catalog No      | Format  | Size   |
|-----------------|---|--------|
| 7088-MSM3-P0    | Purified Ab with BSA and Azide at 200ug/ml    | 20 ug  |
| 7088-MSM3-P1    | Purified Ab with BSA and Azide at 200ug/ml    | 100 ug |
| 7088-MSM3-P1ABX | Purified Ab WITHOUT BSA and Azide at 1.0mg/ml | 100 ug |

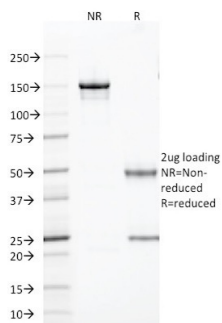
| Applications               | Tested Dillution | Note  |
|----------------------------|------------------|---|
| Immunohistochemistry (IHC) | 1-2ug/ml         | 30 min at RT. Staining of formalin-fixed tissues requires heating tissue sections in 10mM Tris with 1mM EDTA, pH 9.0, for 45 min at 95°C followed by cooling at RT for 20 minutes |
| Western Blot (WB)          | 2-4ug/ml         |   |

### Product Details

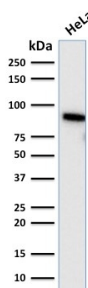
|                               |   |
|-------------------------------|---|
| <b>Clone</b>                  | TLE1/2085   |
| <b>Gene Name</b>              | TLE1  |
| <b>Immunogen</b>              | Recombinant fragment (aa 175-338) of human TLE1 (exact sequence is proprietary) |
| <b>Host</b>                   | Mouse   |
| <b>Clonality</b>              | Monoclonal  |
| <b>Isotype / Light Chain</b>  | IgG2a / Kappa   |
| <b>Mol. Weight of Antigen</b> | 83kDa   |
| <b>Cellular Localization</b>  | Nucleus   |
| <b>Species Reactivity</b>     | Human   |
| <b>Positive Control</b>       | HeLa, HepG2 or Jurkat cells. Endometrium Carcinoma or Sarcomas.                 |

\*Optimal dilution for a specific application should be determined.

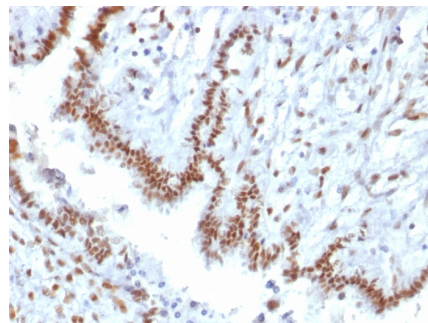
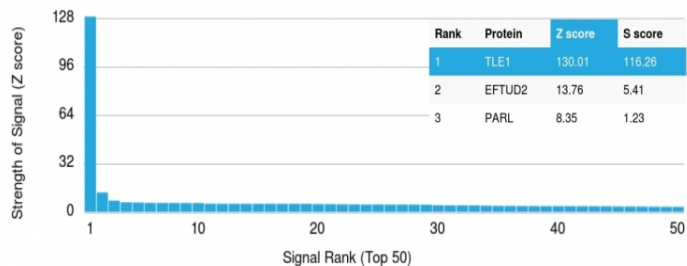
### Product Images for TLE1 (Synovial Sarcoma Marker) Antibody



SDS-PAGE Analysis of Purified TLE1 Mouse Monoclonal Antibody (TLE1/2085). Confirmation of Purity and Integrity of Antibody.



Western Blot Analysis of human HeLa cell lysate using TLE1 Mouse Monoclonal Antibody (TLE1/2085).



Formalin-fixed, paraffin-embedded human Endometrial Carcinoma stained with TLE1 Mouse Monoclonal Antibody (TLE1/2085).

Analysis of Protein Array containing more than 19,000 full-length human proteins using TLE1 Mouse Monoclonal Antibody (TLE1/2085). Z- and S- Score: The Z-score represents the strength of a signal that a monoclonal antibody (MAb) (in combination with a fluorescently-tagged anti-IgG secondary antibody) produces when binding to a particular protein on the HuProt™ array. Z-scores are described in units of standard deviations (SD's) above the mean value of all signals generated on that array. If targets on HuProt™ are arranged in descending order of the Z-score, the S-score is the difference (also in units of SD's) between the Z-score. S-score therefore represents the relative target specificity of a MAb to its intended target. A MAb is considered to be specific to its intended target, if the MAb has an S-score of at least 2.5. For example, if a MAb binds to protein X with a Z-score of 43 and to protein Y with a Z-score of 14, then the S-score for the binding of that MAb to protein X is equal to 29.

### Specificity & Comments

Key players in the Notch pathway are the TLE genes, which are human homologs of the *Drosophila* groucho gene. Groucho is a transcriptional repressor that plays a key role in neurogenesis, segmentation and sex determination. Transducin-like enhancer protein1 (TLE1) is a protein that is encoded by the TLE1 gene and is involved in control of hematopoiesis, neuronal, and terminal epithelial differentiation. Positive immunohistochemical nuclear staining with anti-TLE-1 has been shown to be a useful addition to an IHC panel when differentiating synovial sarcoma from other soft tissue malignancies.

### Limitations and Warranty

This antibody is available for research use only and is not approved for use in diagnosis. There are no warranties, expressed or implied, which extend beyond this description. Company is not liable for any personal injury or economic loss resulting from this product.

### Supplied As

200ug/ml of Ab Purified from Bioreactor Concentrate by Protein A/G. Prepared in 10mM PBS with 0.05% BSA & 0.05% azide. Also available WITHOUT BSA & azide at 1.0mg/ml.

### Storage and Stability

Antibody with azide - store at 2 to 8°C. Antibody without azide - store at -20 to -80°C. Antibody is stable for 24 months. Non-hazardous. No MSDS required.

### Research Areas

Cardiovascular, Signal Transduction