

CD282 (Toll-Like Receptor 2) Antibody

Mouse Monoclonal Antibody [Clone TLR2/221]

Catalog No	Format	Size
7097-MSM1-P0	Purified Ab with BSA and Azide at 200ug/ml	20 ug
7097-MSM1-P1	Purified Ab with BSA and Azide at 200ug/ml	100 ug
7097-MSM1-P1ABX	Purified Ab WITHOUT BSA and Azide at 1.0mg/ml	100 ug

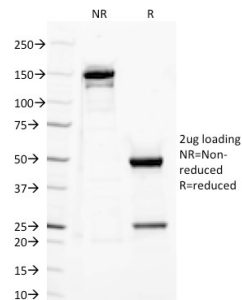
Applications	Tested Dillution	Note
--------------	------------------	------

Product Details

Clone	TLR2/221
Gene Name	TLR2
Immunogen	Recombinant full-length human TLR2 protein.
Host	Mouse
Clonality	Monoclonal
Isotype / Light Chain	IgG2a / Kappa
Mol. Weight of Antigen	~90kDa
Cellular Localization	Cytoplasmic vesicle, Membrane, Membrane raft, Phagosome membrane
Species Reactivity	Dog, Human, Monkey
Positive Control	macrophage and monocytes in tonsil., Normal human peripheral blood cells. Dendritic cells

*Optimal dilution for a specific application should be determined.

Product Images for CD282 (Toll-Like Receptor 2) Antibody



SDS-PAGE Analysis of Purified CD282 Mouse Monoclonal antibody (TLR2/221).
Confirmation of Purity and Integrity of Antibody.

Specificity & Comments

This MAb reacts with human Toll-like receptor 2 (TLR2). It is a member of the Toll-like receptor (TLR) family, which plays a fundamental role in pathogen recognition and activation of innate immunity. TLRs are highly conserved from Drosophila to humans and share structural and functional similarities. They recognize pathogen-associated molecular patterns (PAMPs) that are expressed on infectious agents, and mediate the production of cytokines necessary for the development of effective immunity. The various TLRs exhibit different patterns of expression. This gene is expressed most abundantly in peripheral blood leukocytes, and mediates host response to Gram-positive bacteria and yeast via stimulation of NF-kappaB.

Limitations and Warranty

This antibody is available for research use only and is not approved for use in diagnosis. There are no warranties, expressed or implied, which extend beyond this description. Company is not liable for any personal injury or economic loss resulting from this product.

Supplied As

200ug/ml of Ab Purified from Bioreactor Concentrate by Protein A/G. Prepared in 10mM PBS with 0.05% BSA & 0.05% azide. Also available WITHOUT BSA & azide at 1.0mg/ml.

Storage and Stability

Antibody with azide - store at 2 to 8°C. Antibody without azide - store at -20 to -80°C. Antibody is stable for 24 months. Non-hazardous. No MSDS required.

Research Areas

Cardiovascular, Hypoxia, Immuno Oncology, Immunology, Colon Cancer, Complement System, Infectious Disease, Mitochondria Marker, Nuclear Marker