

Tryptase (Mast Cell Marker) Antibody

Mouse Monoclonal Antibody [Clone TPSAB1/1963]

Catalog No	Format	Size
7177-MSM3-P0	Purified Ab with BSA and Azide at 200ug/ml	20 ug
7177-MSM3-P1	Purified Ab with BSA and Azide at 200ug/ml	100 ug
7177-MSM3-P1ABX	Purified Ab WITHOUT BSA and Azide at 1.0mg/ml	100 ug

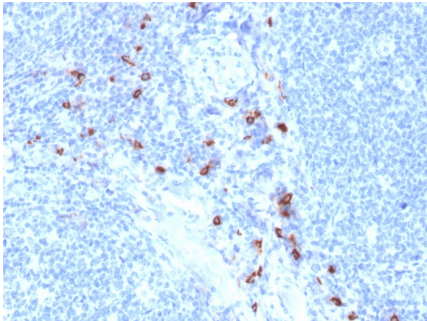
Applications	Tested Dillution	Note
Immunohistochemistry (IHC)	1-2ug/ml	30 min at RT. Staining of formalin-fixed tissues requires heating tissue sections in 10mM Tris with 1mM EDTA, pH 9.0, for 45 min at 95°C followed by cooling at RT for 20 minutes

Product Details

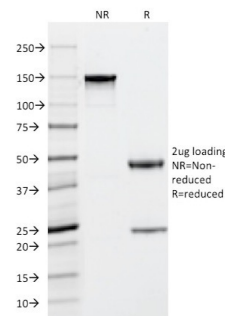
Clone	TPSAB1/1963
Gene Name	TPSAB1
Immunogen	Recombinant human Tryptase protein fragment (around aa 115-233) (Exact sequence is proprietary)
Host	Mouse
Clonality	Monoclonal
Isotype / Light Chain	IgG1 / Kappa
Mol. Weight of Antigen	31-36kDa
Cellular Localization	Secreted
Species Reactivity	Human
Positive Control	Skin or Tonsil.

*Optimal dilution for a specific application should be determined.

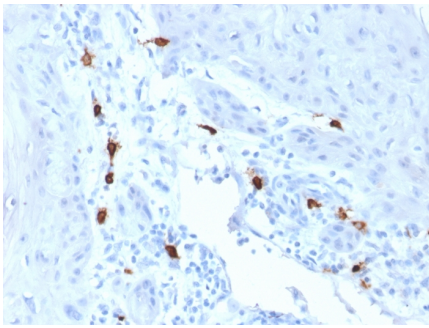
Product Images for Tryptase (Mast Cell Marker) Antibody



Formalin-fixed, paraffin-embedded human tonsil stained with Tryptase Mouse Monoclonal Antibody (TPSAB1/1963). HIER: Tris/EDTA, pH9.0, 45min. 2°C: HRP-polymer, 30min. DAB, 5min.



SDS-PAGE Analysis of Purified Tryptase Mouse Monoclonal Antibody (TPSAB1/1963). Confirmation of Integrity and Purity of Antibody.



Formalin-fixed, paraffin-embedded human skin stained with Tryptase Mouse Monoclonal Antibody (TPSAB1/1963). HIER: Tris/EDTA, pH9.0, 45min. 2°C: HRP-polymer, 30min. DAB, 5min.

Specificity & Comments

Tryptases comprise a family of trypsin-like serine proteases (peptidase family S1). Tryptases are stored in mast cell secretory granules and basophils. Mast cells are connective tissue cells derived from blood-forming tissues that line arterial walls and secrete substances, which mediate inflammatory and immune responses. Tryptases are released into the extracellular environment and are resistant to all known endogenous proteinase inhibitors. This antibody reacts with mast cells distributed in skin, synovium, lung, and heart. This antibody does not bind with any other cell type. Human mast cell tryptase is considered to be an important marker of mast cell activation and is an important mediator of inflammation. Mastocytosis is a term collectively used for a group of disorders in which there is abnormal accumulation of mast cells in one or multiple organs. Anti-tryptase, combined with anti-CD2, anti-CD25, and anti-CD117, can be useful in identifying reactive mast cell hyperplasia, myelogenous neoplasms, mast cell leukemia, and mastocytosis.

Limitations and Warranty

This antibody is available for research use only and is not approved for use in diagnosis. There are no warranties, expressed or implied, which extend beyond this description. Company is not liable for any personal injury or economic loss resulting from this product.

Supplied As

200ug/ml of Ab Purified from Bioreactor Concentrate by Protein A/G. Prepared in 10mM PBS with 0.05% BSA & 0.05% azide. Also available WITHOUT BSA & azide at 1.0mg/ml.

Storage and Stability

Antibody with azide - store at 2 to 8°C. Antibody without azide - store at -20 to -80°C. Antibody is stable for 24 months. Non-hazardous. No MSDS required.

Research Areas

Mast Cell Marker