

## GRP94 / HSP90B1 (Endoplasmic Reticulum Marker) Antibody

Rat Monoclonal Antibody [Clone SPM249]

Catalog No	Format	Size
7184-RTM1X-P0	Purified Ab with BSA and Azide at 200ug/ml	20 ug
7184-RTM1X-P1	Purified Ab with BSA and Azide at 200ug/ml	100 ug
7184-RTM1X-P1ABX	Purified Ab WITHOUT BSA at 1.0mg/ml	100 ug

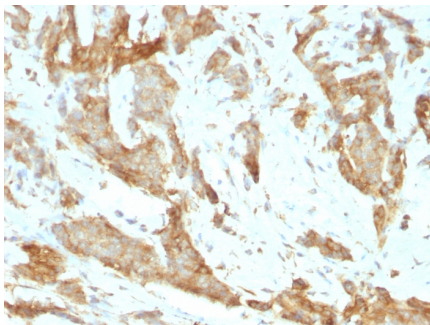
Applications	Tested Dillution	Note
Flow Cytometry (Flow)	1-2ug/million cells	
Immunofluorescence (IF)	1-3ug/ml	
Immunohistochemistry (IHC)	1-2ug/ml	30 min at RT. Staining of formalin-fixed tissues requires heating tissue sections in 10mM Tris with 1mM EDTA, pH 9.0, for 45 min at 95°C followed by cooling at RT for 20 minutes
Western Blot (WB)	2-4ug/ml	

### Product Details

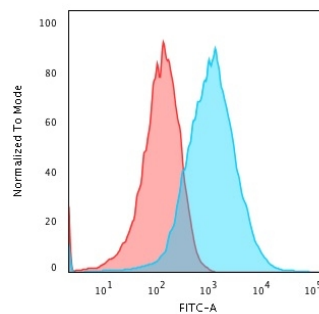
<b>Clone</b>	SPM249
<b>Gene Name</b>	HSP90B1
<b>Immunogen</b>	Purified glucose regulated protein 94 (grp94) from chicken oviducts
<b>Host</b>	Rat
<b>Clonality</b>	Monoclonal
<b>Isotype / Light Chain</b>	IgG2a / Kappa
<b>Mol. Weight of Antigen</b>	94kDa
<b>Cellular Localization</b>	Endoplasmic reticulum lumen, Melanosome, Sarcoplasmic reticulum lumen
<b>Species Reactivity</b>	Chicken, Cow, Dog, Guinea Pig, Hamster, Horse, Human, Monkey, Mouse, Pig, Rabbit, Rat, Sheep, Xenopus Laevis
<b>Positive Control</b>	HePG2. U20S cells. About 50% of breast tumors express grp94 protein.

\*Optimal dilution for a specific application should be determined.

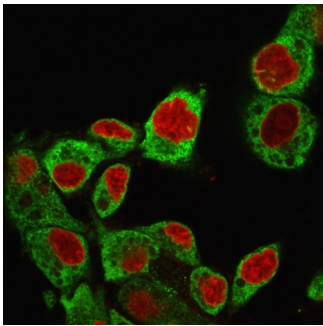
### Product Images for GRP94 / HSP90B1 (Endoplasmic Reticulum Marker) Antibody



Formalin-fixed, paraffin-embedded human Breast Carcinoma stained with GRP94 Monoclonal Antibody (SPM249).



Flow Cytometric Analysis of PFA-fixed HePG2 cells using GRP94 Monoclonal Antibody (SPM249) followed by Goat anti-Rat- IgG-CF488 (Blue); Isotype Control (Red).



Immunofluorescence Analysis of HePG2 cells labeling GRP94 with GRP94 Monoclonal Antibody (SPM249) followed by Goat anti-Mouse IgG-CF488 (Green). The nuclear counterstain is Reddot.(Red).

### Specificity & Comments

Recognizes a protein of 94kDa, which is identified as the glucose-regulated protein 94 (grp94) and also tumor rejection antigen (gp96). Grp94 shows a high degree of sequence homology with the heat shock protein 90 (hsp90). This MAb is highly specific to grp94 and shows minimal cross-reaction with other members of the HSP90 family. Grp's are a class of proteins unresponsive to heat shock and are induced by glucose deprivation. Grp94 has been briefly studied as a prognostic factor in breast cancer.

### Supplied As

200ug/ml of Ab Purified from Bioreactor Concentrate by Protein A/G. Prepared in 10mM PBS with 0.05% BSA & 0.05% azide. Also available WITHOUT BSA at 1.0mg/ml.

### Storage and Stability

Antibody with azide - store at 2 to 8°C. Antibody without azide - store at -20 to -80°C. Antibody is stable for 24 months. Non-hazardous. No MSDS required.

### Research Areas

Cardiovascular, Hypoxia, Immunology, Cytokine Signaling

### Limitations and Warranty

This antibody is available for research use only and is not approved for use in diagnosis. There are no warranties, expressed or implied, which extend beyond this description. Company is not liable for any personal injury or economic loss resulting from this product.