

UBE2B Antibody

Mouse Monoclonal Antibody [Clone PCR-UBE2B-1C7]

Catalog No	Format	Size
7320-MSM1-P0	Purified Ab with BSA and Azide at 200ug/ml	20 ug
7320-MSM1-P1	Purified Ab with BSA and Azide at 200ug/ml	100 ug
7320-MSM1-P1ABX	Purified Ab WITHOUT BSA and Azide at 1.0mg/ml	100 ug

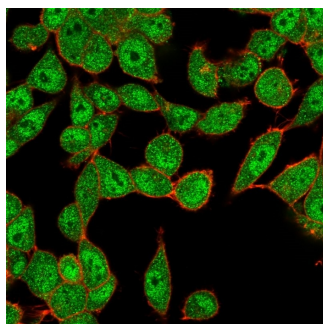
Applications	Tested Dillution	Note
Flow Cytometry (Flow)	1-2ug/million cells	
Immunofluorescence (IF)	1-3ug/ml	

Product Details

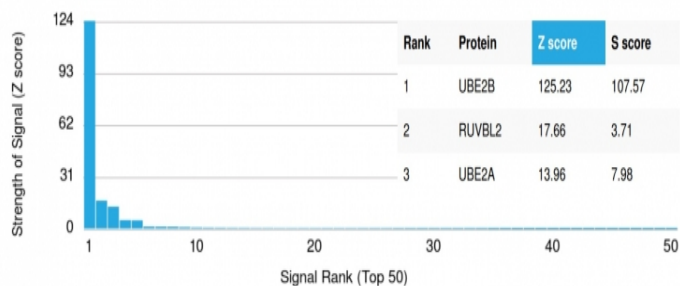
Clone	PCR-UBE2B-1C7
Gene Name	UBE2B
Immunogen	Recombinant full-length human UBE2B protein
Host	Mouse
Clonality	Monoclonal
Isotype / Light Chain	IgG2b
Mol. Weight of Antigen	17kDa
Cellular Localization	Cell membrane, Nucleus
Species Reactivity	Human
Positive Control	HeLa, K562 or Jurkat cells.

*Optimal dilution for a specific application should be determined.

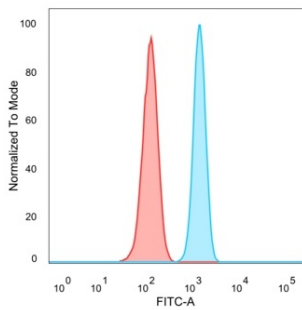
Product Images for UBE2B Antibody



Immunofluorescent Analysis of PFA-fixed HeLa cells. UBE2B Mouse Monoclonal Antibody (PCR-UBE2B-1C7) followed by IgG-CF488 (green), counterstained with phalloidin.



Analysis of Protein Array containing more than 19,000 full-length human proteins using UBE2B Mouse Monoclonal Antibody (PCR-UBE2B-1C7). Z- and S- Score: The Z-score represents the strength of a signal that a monoclonal antibody (MAb) (in combination with a fluorescently-tagged anti-IgG secondary antibody) produces when binding to a particular protein on the HuProt™ array. Z-scores are described in units of standard deviations (SD's) above the mean value of all signals generated on that array. If targets on HuProt™ are arranged in descending order of the Z-score, the S-score is the difference (also in units of SD's) between the Z-score. S-score therefore represents the relative target specificity of a MAb to its intended target. A MAb is considered to be specific to its intended target, if the MAb has an S-score of at least 2.5. For example, if a MAb binds to protein X with a Z-score of 43 and to protein Y with a Z-score of 14, then the S-score for the binding of that MAb to protein X is equal to 29.



Flow Cytometric Analysis of PFA-fixed HeLa cells.UBE2B Mouse Monoclonal Antibody (PCRP-UBE2B-1C7) followed by goat anti-mouse IgG-CF488 (blue); unstained cells (red).

Specificity & Comments

The ubiquitin (Ub) pathway involves three sequential enzymatic steps that facilitate the conjugation of Ub and Ub-like molecules to specific protein substrates. The first step requires the ATP-dependent activation of the Ub C-terminus and the assembly of multi-Ub chains by the Ub-activating enzyme known as the E1 component. The Ub chain is then conjugated to the Ub-conjugating enzyme (E2) to generate an intermediate Ub-E2 complex. The Ub-ligase (E3) then catalyzes the transfer of Ub from E2 to the appropriate protein substrate. UBE2A (ubiquitin-conjugating enzyme E2 A) and UBE2B (ubiquitin-conjugating enzyme E2 B) are both Ub-conjugating enzymes that are essential to post replication repair of UV-damaged DNA. UBE2A and UBE2B are both nuclear and cell membrane proteins that have been found to interact with Rad18.

Limitations and Warranty

This antibody is available for research use only and is not approved for use in diagnosis. There are no warranties, expressed or implied, which extend beyond this description. Company is not liable for any personal injury or economic loss resulting from this product.

Supplied As

200ug/ml of Ab purified from Bioreactor Concentrate by Protein A/G. Prepared in 10mM PBS with 0.05% BSA & 0.05% azide. Also available WITHOUT BSA & azide at 1.0mg/ml.

Storage and Stability

Antibody with azide - store at 2 to 8 °C. Antibody without azide - store at -20 to -80 °C. Antibody is stable for 24 months. Non-hazardous. No MSDS required.

Research Areas

Immunology, Nuclear Marker