

## Villin (GI-Mucosal & Urogenital Brush Border Marker) Antibody

Mouse Monoclonal Antibody [Clone VIL1/1314]

Catalog No	Format	Size
7429-MSM1-P0	Purified Ab with BSA and Azide at 200ug/ml	20 ug
7429-MSM1-P1	Purified Ab with BSA and Azide at 200ug/ml	100 ug
7429-MSM1-P1ABX	Purified Ab WITHOUT BSA at 1.0mg/ml	100 ug

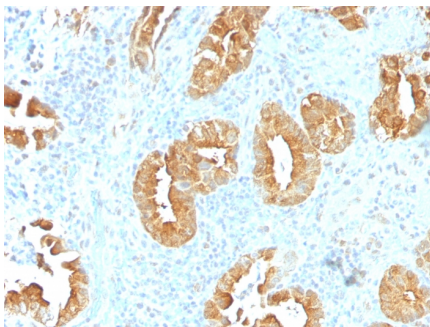
Applications	Tested Dillution	Note
Immunohistochemistry (IHC)	1-2ug/ml	30 min at RT. Staining of formalin-fixed tissues requires heating tissue sections in 10mM Tris with 1mM EDTA, pH 9.0, for 45 min at 95°C followed by cooling at RT for 20 minutes
Western Blot (WB)	2-4ug/ml	

### Product Details

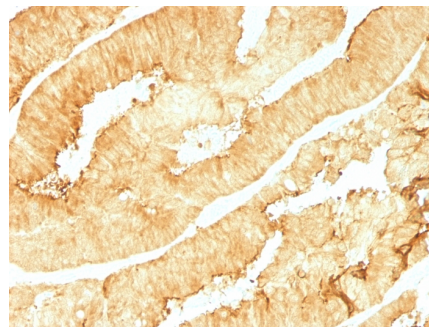
<b>Clone</b>	VIL1/1314
<b>Gene Name</b>	VIL1
<b>Immunogen</b>	Recombinant human Villin fragment (around aa179-311) (exact sequence is proprietary)
<b>Host</b>	Mouse
<b>Clonality</b>	Monoclonal
<b>Isotype / Light Chain</b>	IgG1 / Kappa
<b>Mol. Weight of Antigen</b>	93kDa
<b>Cellular Localization</b>	Cell projection, Cytoplasm, Cytoskeleton, Filopodium, Filopodium tip, Lamellipodium, Microvillus, Ruffle
<b>Species Reactivity</b>	Human
<b>Positive Control</b>	A549, HepG2 and HCT116 cells. Colon or Rectum.

\*Optimal dilution for a specific application should be determined.

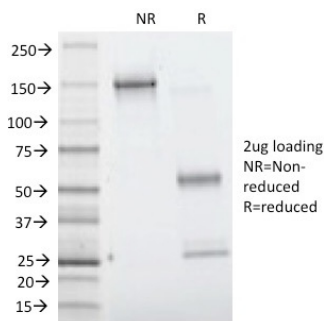
### Product Images for Villin (GI-Mucosal & Urogenital Brush Border Marker) Antibody



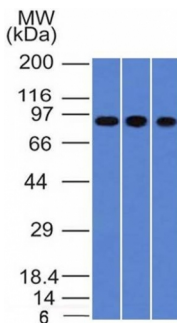
Formalin-fixed, paraffin-embedded human Rectum stained with Villin Monoclonal Antibody (VIL1/1314).



Formalin-fixed, paraffin-embedded human Colon stained with Villin Monoclonal Antibody (VIL1/1314).



SDS-PAGE Analysis of Purified Villin Monoclonal Antibody (VIL1/1314). Confirmation of Purity and Integrity of Antibody.



Western Blot of A549, HepG2 & HCT116 cell lysates with Villin Monoclonal Antibody (VIL1/1314).

### Specificity & Comments

Recognizes a protein of 95kDa, which is identified as villin. It is a major constituent in the microvilli, which compose the brush border of epithelial cells forming absorptive surfaces of the intestinal and renal proximal tubular epithelia. Anti-Villin labels the brush border area in the gastrointestinal mucosal epithelium and urogenital tract. Among neoplasms, villin is predominantly expressed in tumors of colorectal origin. Antibody to villin is useful in identifying malignant cells from primary and metastatic colorectal carcinomas. This antibody also labels Merkel cells of the skin.

### Supplied As

200ug/ml of Ab Purified from Bioreactor Concentrate by Protein A/G. Prepared in 10mM PBS with 0.05% BSA & 0.05% azide. Also available WITHOUT BSA & azide at 1.0mg/ml.

### Storage and Stability

Antibody with azide - store at 2 to 8°C. Antibody without azide - store at -20 to -80°C. Antibody is stable for 24 months. Non-hazardous. No MSDS required.

### Research Areas

Cardiovascular

### Limitations and Warranty

This antibody is available for research use only and is not approved for use in diagnosis. There are no warranties, expressed or implied, which extend beyond this description. Company is not liable for any personal injury or economic loss resulting from this product.