

## VLDL-Receptor (Very Low Density Lipoprotein Receptor) Antibody

Mouse Monoclonal Antibody [Clone VLDLR/1337]

Catalog No	Format	Size
7436-MSM1-P0	Purified Ab with BSA and Azide at 200ug/ml	20 ug
7436-MSM1-P1	Purified Ab with BSA and Azide at 200ug/ml	100 ug
7436-MSM1-P1ABX	Purified Ab WITHOUT BSA and Azide at 1.0mg/ml	100 ug

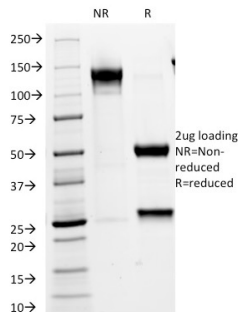
Applications	Tested Dillution	Note
Immunohistochemistry (IHC)	1-2ug/ml	30 min at RT. Staining of formalin-fixed tissues requires heating tissue sections in 10mM Tris with 1mM EDTA, pH 9.0, for 45 min at 95°C followed by cooling at RT for 20 minutes

### Product Details

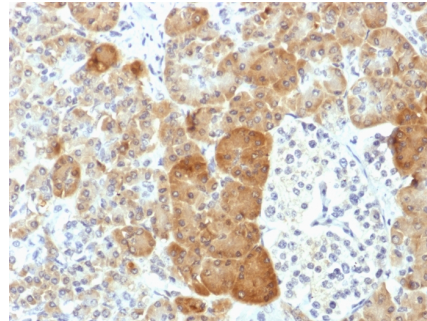
<b>Clone</b>	VLDLR/1337
<b>Gene Name</b>	VLDLR
<b>Immunogen</b>	Recombinant human VLDLR fragment from c-terminal
<b>Host</b>	Mouse
<b>Clonality</b>	Monoclonal
<b>Isotype / Light Chain</b>	IgG1 / Lambda
<b>Mol. Weight of Antigen</b>	143-161kDa
<b>Cellular Localization</b>	Cell membrane, Clathrin-coated pit, Membrane
<b>Species Reactivity</b>	Human, Rat
<b>Positive Control</b>	Cerebellum, Heart or Skeletal Muscle., HeLa or U-251 cells. Pancreas

\*Optimal dilution for a specific application should be determined.

### Product Images for VLDL-Receptor (Very Low Density Lipoprotein Receptor) Antibody



SDS-PAGE Analysis of Purified VLDL-Receptor Mouse Monoclonal Antibody (VLDLR/1337). Confirmation of Purity and Integrity of Antibody.



Formalin-fixed, paraffin-embedded human Pancreas stained with VLDL-Receptor Mouse Monoclonal Antibody (VLDLR/1337).

### Specificity & Comments

VLDLR (very low density lipoprotein receptor) is a member of the LDL receptor gene family, which includes LDL receptor, LRP, megalin, VLDLR and ApoER2. The LDL receptor family is characterized by a cluster of cysteine-rich class A repeats, epidermal growth factor (EGF)-like repeats, YWTD repeats and an O-linked sugar domain. VLDLR associates with RAP (receptor associated protein) during receptor folding, and RAP facilitates the secretion of the extracellular region of VLDLR. VLDLR is thought to mediate the interaction of extracellular Reelin and cytosolic mDab1 (mammalian disabled protein), which activates a tyrosine kinase. This pathway regulates the migration of neurons along the radial glial fiber network during brain development.

### Supplied As

200ug/ml of Ab Purified from Bioreactor Concentrate by Protein A/G. Prepared in 10mM PBS with 0.05% BSA & 0.05% azide. Also available WITHOUT BSA & azide at 1.0mg/ml.

### Storage and Stability

Antibody with azide - store at 2 to 8°C. Antibody without azide - store at -20 to -80°C. Antibody is stable for 24 months. Non-hazardous. No MSDS required.

### Research Areas

Cardiovascular, Developmental Biology

## Limitations and Warranty

This antibody is available for research use only and is not approved for use in diagnosis. There are no warranties, expressed or implied, which extend beyond this description. Company is not liable for any personal injury or economic loss resulting from this product.

---