

XRCC5 (Ku86 / Ku80) (Thyroid-Lupus Autoantigen) Antibody

Mouse Monoclonal Antibody [Clone XRCC5/7318]

Catalog No	Format	Size
7520-MSM8-P0	Purified Ab with BSA and Azide at 200ug/ml	20 ug
7520-MSM8-P1	Purified Ab with BSA and Azide at 200ug/ml	100 ug
7520-MSM8-P1ABX	Purified Ab WITHOUT BSA and Azide at 1.0mg/ml	100 ug

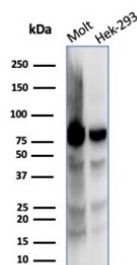
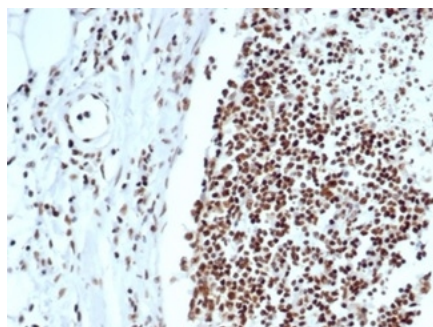
Applications	Tested Dillution	Note
Immunohistochemistry (IHC)	1-2ug/ml	30 min at RT. Staining of formalin-fixed tissues requires heating tissue sections in 10mM Tris with 1mM EDTA, pH 9.0, for 45 min at 95°C followed by cooling at RT for 20 minutes
Western Blot (WB)	2-4ug/ml	

Product Details

Clone	XRCC5/7318
Gene Name	XRCC5
Immunogen	Recombinant fragment (around aa300-500) of human XRCC5 (exact sequence is proprietary)
Host	Mouse
Clonality	Monoclonal
Isotype / Light Chain	IgG1 / Kappa
Mol. Weight of Antigen	80-86kDa
Cellular Localization	Chromosome, Nucleolus, Nucleus
Species Reactivity	Human
Positive Control	HeLa, MCF-7 or HT29 cells. Human thyroid or lymph node., Molt-4

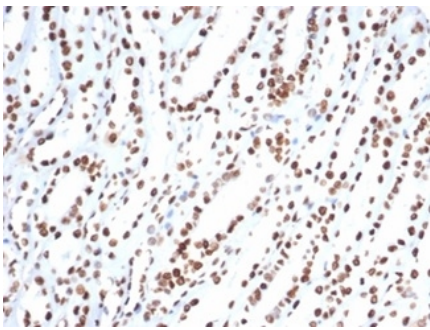
*Optimal dilution for a specific application should be determined.

Product Images for XRCC5 (Ku86 / Ku80) (Thyroid-Lupus Autoantigen) Antibody



Formalin-fixed, paraffin-embedded human lymph node stained with XRCC5 / Ku86 / Ku80 Mouse Monoclonal Antibody (XRCC5/7318). HIER: Tris/EDTA, pH9.0, 45min. 2 °: HRP-polymer, 30min. DAB, 5min.

Western blot analysis of MOLT-4 and HEK293 cell lysates using XRCC5 / Ku86 / Ku80 Mouse Monoclonal Antibody (XRCC5/7318).



Formalin-fixed, paraffin-embedded human kidney stained with XRCC5 / Ku86 / Ku80 Mouse Monoclonal Antibody (XRCC5/7318). HIER: Tris/EDTA, pH9.0, 45min. 2 °: HRP-polymer, 30min. DAB, 5min.

Specificity & Comments

The Ku protein is localized in the nucleus and is composed of subunits referred to as Ku-70 (or p70) and Ku-86 or (p86) which is also known by the synonym Ku-80 or (p80). Ku was first described as an autoantigen to which antibodies were produced in a patient with scleroderma-polymyositis overlap syndrome, and was later found in the sera of patients with other rheumatic diseases. Ku has several functions, including cell signaling, DNA replication and transcriptional activation. Ku is involved in Pol II-directed transcription by virtue of its DNA binding activity; serving as the regulatory component of the DNA-associated protein kinase that phosphorylates Pol II and transcription factor Sp. Ku proteins also activate transcription from the U1 small nuclear RNA and the human transferrin receptor gene promoters.

Limitations and Warranty

This antibody is available for research use only and is not approved for use in diagnosis. There are no warranties, expressed or implied, which extend beyond this description. Company is not liable for any personal injury or economic loss resulting from this product.

Supplied As

200ug/ml of Ab purified from Bioreactor Concentrate by Protein A/G. Prepared in 10mM PBS with 0.05% BSA & 0.05% azide. Also available WITHOUT BSA & azide at 1.0mg/ml.

Storage and Stability

Antibody with azide - store at 2 to 8 °C. Antibody without azide - store at -20 to -80 °C. Antibody is stable for 24 months. Non-hazardous. No MSDS required.

Research Areas

Immunology, Infectious Disease, Nuclear Marker
