

ASRGL1 (Asparaginase Like 1) Antibody

Mouse Monoclonal Antibody [Clone CRASH/1289]

Catalog No	Format	Size
80150-MSM1-P0	Purified Ab with BSA and Azide at 200ug/ml	20 ug
80150-MSM1-P1	Purified Ab with BSA and Azide at 200ug/ml	100 ug
80150-MSM1-P1ABX	Purified Ab WITHOUT BSA and Azide at 1.0mg/ml	100 ug

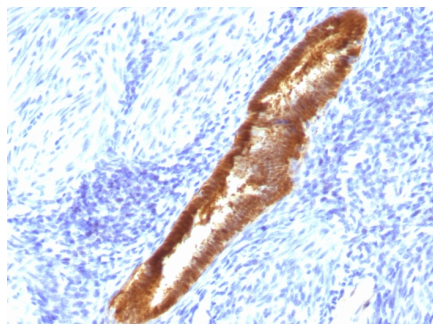
Applications	Tested Dillution	Note
Immunohistochemistry (IHC)	1-2ug/ml	30 min at RT. Staining of formalin-fixed tissues requires heating tissue sections in 10mM Tris with 1mM EDTA, pH 9.0, for 45 min at 95°C followed by cooling at RT for 20 minutes

Product Details

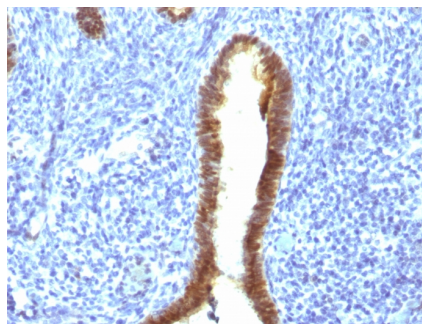
Clone	CRASH/1289
Gene Name	ASRGL1
Immunogen	Recombinant human ASRGL1 fragment
Host	Mouse
Clonality	Monoclonal
Isotype / Light Chain	IgG1 / Kappa
Mol. Weight of Antigen	17-25kDa
Cellular Localization	Cytoplasm
Species Reactivity	Human
Positive Control	Endometrium, HeLa cells. Fallopian Tube, Uterus or Cervix.

**Optimal dilution for a specific application should be determined.*

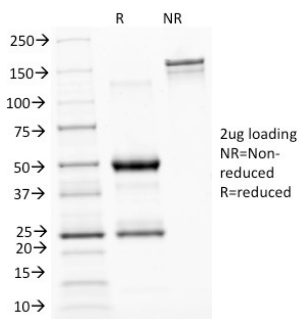
Product Images for ASRGL1 (Asparaginase Like 1) Antibody



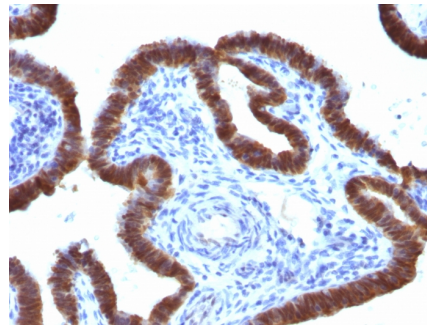
Formalin-fixed, paraffin-embedded human Endometrium stained with ASRGL1 Mouse Monoclonal Antibody (CRASH/1289).



Formalin-fixed, paraffin-embedded human Uterus stained with ASRGL1 Mouse Monoclonal Antibody (CRASH/1289).



SDS-PAGE Analysis of Purified ASRGL1 Mouse Monoclonal Antibody (CRASH/1289). Confirmation of Purity and Integrity of Antibody.



Formalin-fixed, paraffin-embedded human Fallopian Tube stained with ASRGL1 Mouse Monoclonal Antibody (CRASH/1289).

Specificity & Comments

ASRGL1 (Asparaginase-like protein 1), also known as CRASH, is a 308 amino acid protein belonging to the Ntn-hydrolase family. Asparaginases utilize asparagine as a substrate to produce aspartic acid and ammonia. ASRGL1 has been identified as a autoantigenic protein that is present in the mid-piece of sperm after obstruction of the male reproductive tract. ASRGL1 is expressed highly in testis, but is also expressed in brain, kidney and gastrointestinal tissues. High levels of ASRGL1 have also been identified in ovarian, uterine and mammary tumors in comparison with normal tissues of the same origin.

Limitations and Warranty

This antibody is available for research use only and is not approved for use in diagnosis. There are no warranties, expressed or implied, which extend beyond this description. Company is not liable for any personal injury or economic loss resulting from this product.

Supplied As

200ug/ml of Ab Purified from Bioreactor Concentrate by Protein A/G. Prepared in 10mM PBS with 0.05% BSA & 0.05% azide. Also available WITHOUT BSA & azide at 1.0mg/ml.

Storage and Stability

Antibody with azide - store at 2 to 8°C. Antibody without azide - store at -20 to -80°C. Antibody is stable for 24 months. Non-hazardous. No MSDS required.