

TCL1 (T-Cell Marker) Antibody

Mouse Monoclonal Antibody [Clone TCL1/2079]

Catalog No	Format	Size
8115-MSM2-P0	Purified Ab with BSA and Azide at 200ug/ml	20 ug
8115-MSM2-P1	Purified Ab with BSA and Azide at 200ug/ml	100 ug
8115-MSM2-P1ABX	Purified Ab WITHOUT BSA and Azide at 1.0mg/ml	100 ug

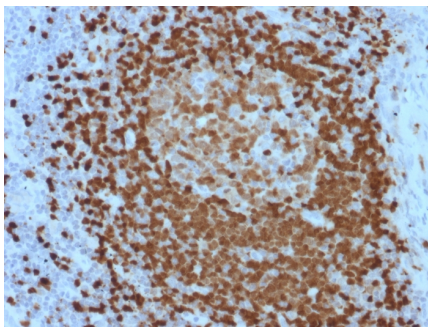
Applications	Tested Dillution	Note
Immunohistochemistry (IHC)	1-2ug/ml	30 min at RT. Staining of formalin-fixed tissues requires heating tissue sections in 10mM Tris with 1mM EDTA, pH 9.0, for 45 min at 95°C followed by cooling at RT for 20 minutes
Western Blot (WB)	2-4ug/ml	

Product Details

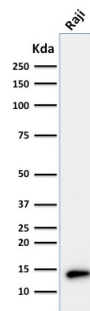
Clone	TCL1/2079
Gene Name	TCL1A
Immunogen	Recombinant fragment (around aa 2-109) of human TCL1 protein (exact sequence is proprietary)
Host	Mouse
Clonality	Monoclonal
Isotype / Light Chain	IgG2a / Kappa
Mol. Weight of Antigen	14kDa
Cellular Localization	Cytoplasm, Endoplasmic reticulum, Microsome, Nucleus
Species Reactivity	Human
Positive Control	Ramos or Raji cells. Tonsil or T-cell Lymphoma.

*Optimal dilution for a specific application should be determined.

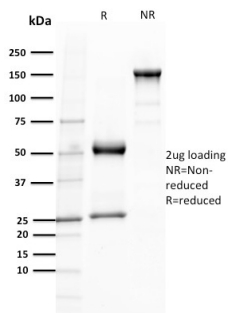
Product Images for TCL1 (T-Cell Marker) Antibody



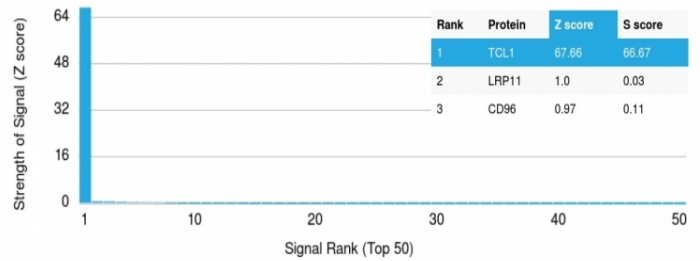
Formalin-fixed, paraffin-embedded human Lymph Node stained with TCL1 Mouse Monoclonal Antibody (TCL1/2079).



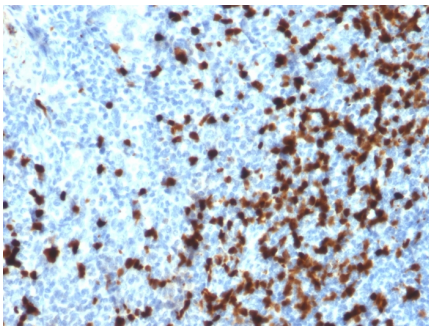
Western Blot Analysis of Raji cell lysate using TCL1 Mouse Monoclonal Antibody (TCL1/2079).



SDS-PAGE Analysis of Purified TCL1 Mouse Monoclonal Antibody (TCL1/2079). Confirmation of Purity and Integrity of Antibody.



Analysis of Protein Array containing more than 19,000 full-length human proteins using TCL1 Mouse Monoclonal Antibody (TCL1/2079). Z- and S- Score: The Z-score represents the strength of a signal that a monoclonal antibody (MAb) (in combination with a fluorescently-tagged anti-IgG secondary antibody) produces when binding to a particular protein on the HuProt™ array. Z-scores are described in units of standard deviations (SD's) above the mean value of all signals generated on that array. If targets on HuProt™ are arranged in descending order of the Z-score, the S-score is the difference (also in units of SD's) between the Z-score. S-score therefore represents the relative target specificity of a MAb to its intended target. A MAb is considered to specific to its intended target, if the MAb has an S-score of at least 2.5. For example, if a MAb binds to protein X with a Z-score of 43 and to protein Y with a Z-score of 14, then the S-score for the binding of that MAb to protein X is equal to 29.



Formalin-fixed, paraffin-embedded human Tonsil stained with TCL1 Mouse Monoclonal Antibody (TCL1/2079).

Specificity & Comments

T-cell leukemia/Lymphoma Protein 1A (TCL-1A), also known as p14TCL1 is a product of the TCL1 gene that is involved in T-cell prolymphocytic leukemia (TPLL). T-PLL is a rare form of mature T-cell leukemia, which is consistently associated with chromosomal rearrangements characterized by the juxtaposition of the TCRA locus on chromosome 14q11 and the TCL1A gene on 14q32.13. TCL1 is overexpressed in Burkitt lymphoma, the majority of AIDS-related non-Hodgkin lymphoma-designated immunoblastic plasmacytoid lymphoma, lymphoblastic lymphoma, chronic lymphocytic leukemia, mantle cell lymphoma, follicular lymphoma, diffuse large B-cell lymphoma, and primary cutaneous B-cell lymphoma.

Limitations and Warranty

This antibody is available for research use only and is not approved for use in diagnosis. There are no warranties, expressed or implied, which extend beyond this description. Company is not liable for any personal injury or economic loss resulting from this product.

Supplied As

200ug/ml of Ab Purified from Bioreactor Concentrate by Protein A/G. Prepared in 10mM PBS with 0.05% BSA & 0.05% azide. Also available WITHOUT BSA & azide at 1.0mg/ml.

Storage and Stability

Antibody with azide - store at 2 to 8°C. Antibody without azide - store at -20 to -80°C. Antibody is stable for 24 months. Non-hazardous. No MSDS required.

Research Areas

Cancer, Immuno Oncology