

Recombinant Eosinophil Peroxidase (EPX) Antibody

Rabbit Monoclonal Antibody [Clone EPX/3908R]

Catalog No	Format	Size
8288-RBM4-P0	Purified Ab with BSA and Azide at 200ug/ml	20 ug
8288-RBM4-P1	Purified Ab with BSA and Azide at 200ug/ml	100 ug
8288-RBM4-P1ABX	Purified Ab WITHOUT BSA and Azide at 1.0mg/ml	100 ug

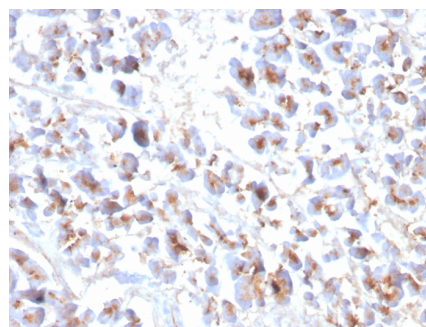
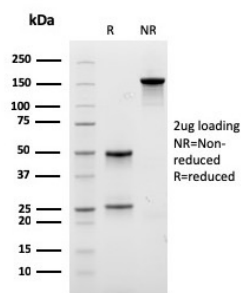
Applications	Tested Dillution	Note
Flow Cytometry (Flow)	1-2ug/million cells	
Immunofluorescence (IF)	1-3ug/ml	
Immunohistochemistry (IHC)	1-2ug/ml	30 min at RT. Staining of formalin-fixed tissues requires heating tissue sections in 10mM Tris with 1mM EDTA, pH 9.0, for 45 min at 95°C followed by cooling at RT for 20 minutes

Product Details

Clone	EPX/3908R
Gene Name	EPX
Immunogen	Human eosinophils from a patient with hypereosinophilic syndrome
Host	Rabbit
Clonality	Monoclonal
Isotype / Light Chain	IgG / Kappa
Mol. Weight of Antigen	70kDa (55kDa-Heavy Chain; 15kDa-Light Chain)
Cellular Localization	Cytoplasmic granule
Species Reactivity	Human
Positive Control	MCF-7 cells. Tonsil

*Optimal dilution for a specific application should be determined.

Product Images for Recombinant Eosinophil Peroxidase (EPX) Antibody



SDS-PAGE Analysis Purified EPX Recombinant Mouse Monoclonal Antibody (EPX/3908R). Confirmation of Purity and Integrity of Antibody.

Formalin-fixed, paraffin-embedded human Pancreas stained with EPX Recombinant Mouse Monoclonal Antibody (EPX/3908R).

Specificity & Comments

Peripheral blood granulocytes are classified into neutrophils, basophils and eosinophils according to the staining characteristics of their cytoplasmic granules. Granule proteins are released by physiologic and pharmacologic stimuli and play important roles in both normal and pathological host immune responses. Eosinophil major basic protein and eosinophil peroxidase (EPX) are granule proteins specific to the eosinophil. AHE-1 recognizes human EPX, a granule protein specific to eosinophils. It does not cross-react with eosinophil major basic protein, elastase, cathepsin G, esterase N, thrombin, plasmin, kallikrein, lactoferrin, or transferrin. This MAb stains eosinophils only and does not stain other peripheral blood cells, including platelets, neutrophils, monocytes, lymphocytes or red blood cells. Human EPX gene product can form a tetramer of two light chains and two heavy chains. Other peroxidase family members include myeloperoxidase (MPO), lactoperoxidase (LPO), and thyroid peroxidase (TPO).

Limitations and Warranty

This antibody is available for research use only and is not approved for use in diagnosis. There are no warranties, expressed or implied, which extend beyond this description. Company is not liable for any personal injury or economic loss resulting from this product.

Supplied As

200ug/ml of Ab purified from Bioreactor Concentrate by Protein A/G. Prepared in 10mM PBS with 0.05% BSA & 0.05% azide. Also available WITHOUT BSA & azide at 1.0mg/ml.

Storage and Stability

Antibody with azide - store at 2 to 8°C. Antibody without azide - store at -20 to -80°C. Antibody is stable for 24 months. Non-hazardous. No MSDS required.

Research Areas

Cardiovascular, Immunology
