

Calpastatin Antibody

Mouse Monoclonal Antibody [Clone CAST/1550]

| Catalog No | Format | Size |
|----------------|---|--------|
| 831-MSM1-P0 | Purified Ab with BSA and Azide at 200ug/ml | 20 ug |
| 831-MSM1-P1 | Purified Ab with BSA and Azide at 200ug/ml | 100 ug |
| 831-MSM1-P1ABX | Purified Ab WITHOUT BSA and Azide at 1.0mg/ml | 100 ug |

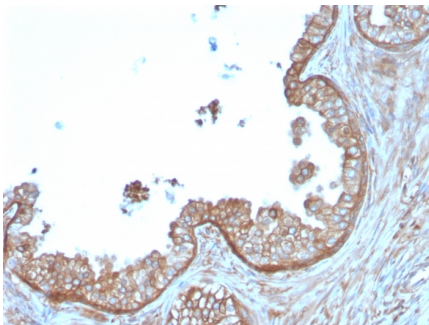
| Applications | Tested Dillution | Note |
|----------------------------|------------------|---|
| Immunohistochemistry (IHC) | 1-2ug/ml | 30 min at RT. Staining of formalin-fixed tissues requires heating tissue sections in 10mM Tris with 1mM EDTA, pH 9.0, for 45 min at 95°C followed by cooling at RT for 20 minutes |

Product Details

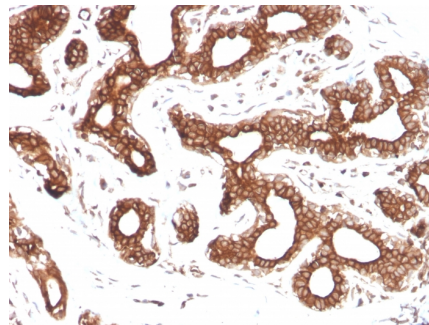
| | |
|------------------------|--|
| Clone | CAST/1550 |
| Gene Name | CAST |
| Immunogen | Recombinant full-length human CAST protein |
| Host | Mouse |
| Clonality | Monoclonal |
| Isotype / Light Chain | IgG1 / Kappa |
| Mol. Weight of Antigen | 126kDa |
| Species Reactivity | Human |
| Positive Control | HeLa cells. Esophagus or Small Intestine. |

**Optimal dilution for a specific application should be determined.*

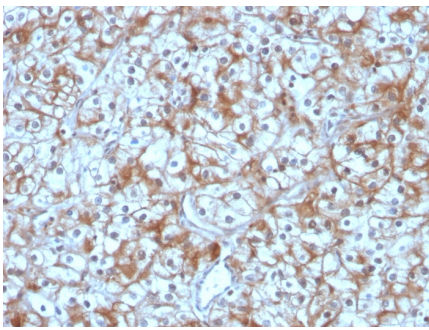
Product Images for Calpastatin Antibody



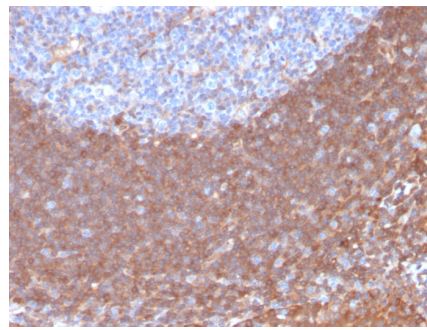
Formalin-fixed, paraffin-embedded human Prostate Carcinoma stained with Calpastatin Mouse Monoclonal Antibody (CAST/1550).



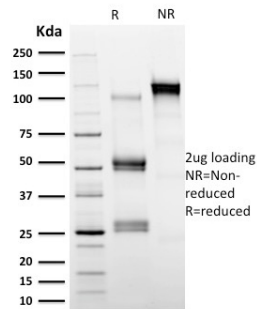
Formalin-fixed, paraffin-embedded human Breast Carcinoma stained with Calpastatin Mouse Monoclonal Antibody (CAST/1550).



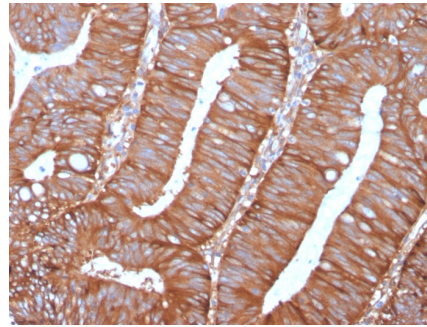
Formalin-fixed, paraffin-embedded human Bladder Carcinoma stained with Calpastatin Mouse Monoclonal Antibody (CAST/1550).



Formalin-fixed, paraffin-embedded human Tonsil stained with Calpastatin Mouse Monoclonal Antibody (CAST/1550).



SDS-PAGE Analysis Purified Calpastatin Mouse Monoclonal Antibody (CAST/1550). Confirmation of Integrity and Purity of Antibody.



Formalin-fixed, paraffin-embedded human Colon Carcinoma stained with Calpastatin Mouse Monoclonal Antibody (CAST/1550).

Specificity & Comments

Calpastatin is an intracellular calcium-dependent protease that cleaves cytoskeletal and sub-membranous proteins. Calpains are non-lysosomal, calcium-activated intracellular cysteine proteases. Calpains mediate specific Ca^{2+} -dependent processes including cell fusion, mitosis and meiosis. Calpains are heterodimers of a small regulatory subunit and one of three large catalytic subunits, designated Calpastatin, Calpain 2 and Calpain p94. Calpastatin regulates Calpain by inhibiting both the proteolytic activity of Calpain and its binding to membranes. Calpastatin exists in two types, tissue type and erythrocyte type, resulting from both alternative splicing and proteolytic processing. Calpastatin co-localizes with human leukocyte antigen-DR (HLA-DR) on activated microglia in the aging brain. Calpain influences the process of spermatogenesis and the events preceding fertilization, such as the acrosome reaction.

Limitations and Warranty

This antibody is available for research use only and is not approved for use in diagnosis. There are no warranties, expressed or implied, which extend beyond this description. Company is not liable for any personal injury or economic loss resulting from this product.

Supplied As

200ug/ml of Ab Purified from Bioreactor Concentrate by Protein A/G. Prepared in 10mM PBS with 0.05% BSA & 0.05% azide. Also available WITHOUT BSA & azide at 1.0mg/ml.

Storage and Stability

Antibody with azide - store at 2 to 8°C. Antibody without azide - store at -20 to -80°C. Antibody is stable for 24 months. Non-hazardous. No MSDS required.

Research Areas

Cardiovascular, Neuroscience, Defective Intrinsic Apoptosis, Infectious Disease