

## BAP1 (BRCA1 Associated Protein 1) Antibody

Mouse Monoclonal Antibody [Clone BAP1/2665]

Catalog No	Format	Size
8314-MSM5-P0	Purified Ab with BSA and Azide at 200ug/ml	20 ug
8314-MSM5-P1	Purified Ab with BSA and Azide at 200ug/ml	100 ug
8314-MSM5-P1ABX	Purified Ab WITHOUT BSA and Azide at 1.0mg/ml	100 ug

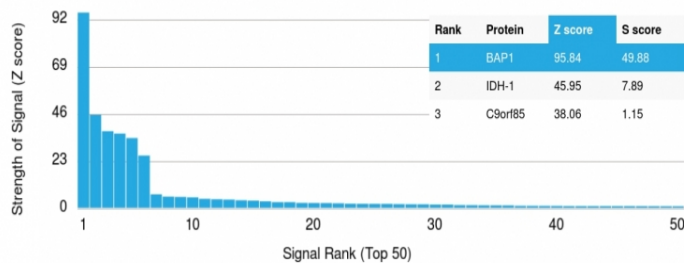
Applications	Tested Dillution	Note
--------------	------------------	------

### Product Details

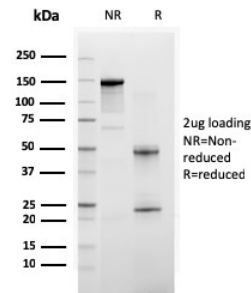
<b>Clone</b>	BAP1/2665
<b>Gene Name</b>	BAP1
<b>Immunogen</b>	Recombinant human BAP1 protein fragment (around aa 191-326) (exact sequence is proprietary)
<b>Host</b>	Mouse
<b>Clonality</b>	Monoclonal
<b>Isotype / Light Chain</b>	IgG / Kappa
<b>Mol. Weight of Antigen</b>	91kDa
<b>Cellular Localization</b>	Cytoplasm, Nucleus
<b>Species Reactivity</b>	Human
<b>Positive Control</b>	Jurkat or PC-3 or HepG2 cells. Testis, Ovarian or Breast Carcinoma., Placenta

\*Optimal dilution for a specific application should be determined.

### Product Images for BAP1 (BRCA1 Associated Protein 1) Antibody



Analysis of Protein Array containing more than 19,000 full-length human proteins using BAP1 Mouse Monoclonal Antibody (BAP1/2665). Z- and S- Score: The Z-score represents the strength of a signal that a monoclonal antibody (Monoclonal Antibody) (in combination with a fluorescently-tagged anti-IgG secondary antibody) produces when binding to a particular protein on the HuProt™ array. Z-scores are described in units of standard deviations (SD's) above the mean value of all signals generated on that array. If targets on HuProt™ are arranged in descending order of the Z-score, the S-score is the difference (also in units of SD's) between the Z-score. S-score therefore represents the relative target specificity of a Monoclonal Antibody to its intended target. A Monoclonal Antibody is considered to be specific to its intended target, if the Monoclonal Antibody has an S-score of at least 2.5. For example, if a Monoclonal Antibody binds to protein X with a Z-score of 43 and to protein Y with a Z-score of 14, then the S-score for the binding of that Monoclonal Antibody to protein X is equal to 29.



SDS-PAGE Analysis of Purified BAP1 Mouse Monoclonal Antibody (BAP1/2665). Confirmation of Purity and Integrity of Antibody.

**Specificity & Comments**

The BAP1 gene belongs to the ubiquitin C-terminal hydrolase subfamily of de-ubiquitination enzymes that are involved in the removal of ubiquitin from proteins. The encoded enzyme binds to the breast cancer type 1 susceptibility protein (BRCA1) via the RING finger domain of the latter and acts as a tumor suppressor. In addition, the enzyme may be involved in regulation of transcription, regulation of cell cycle and growth, response to DNA damage and chromatin dynamics. Germ line mutations in this gene may be associated with tumor predisposition syndrome (TPDS), which involves increased risk of cancers including malignant mesothelioma, Uveal melanoma and cutaneous melanoma.

---

**Limitations and Warranty**

This antibody is available for research use only and is not approved for use in diagnosis. There are no warranties, expressed or implied, which extend beyond this description. Company is not liable for any personal injury or economic loss resulting from this product.

---

**Supplied As**

200ug/ml of Ab Purified from Bioreactor Concentrate by Protein A/G. Prepared in 10mM PBS with 0.05% BSA & 0.05% azide. Also available WITHOUT BSA & azide at 1.0mg/ml.

---

**Storage and Stability**

Antibody with azide - store at 2 to 8°C. Antibody without azide - store at -20 to -80°C. Antibody is stable for 24 months. Non-hazardous. No MSDS required.

---

**Research Areas**

Cancer, Mesenchymal Stem Cell Differentiation, Nuclear Marker

---