

MAML2 (Mastermind Like Transcriptional Coactivator 2) Antibody

Mouse Monoclonal Antibody [Clone MAML2/1302]

Catalog No	Format	Size
84441-MSM1-P0	Purified Ab with BSA and Azide at 200ug/ml	20 ug
84441-MSM1-P1	Purified Ab with BSA and Azide at 200ug/ml	100 ug
84441-MSM1-P1ABX	Purified Ab WITHOUT BSA and Azide at 1.0mg/ml	100 ug

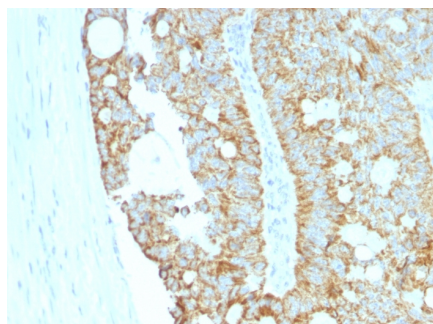
Applications	Tested Dillution	Note
Flow Cytometry (Flow)	1-2ug/million cells	
Immunofluorescence (IF)	1-3ug/ml	
Immunohistochemistry (IHC)	1-2ug/ml	30 min at RT. Staining of formalin-fixed tissues requires heating tissue sections in 10mM Tris with 1mM EDTA, pH 9.0, for 45 min at 95°C followed by cooling at RT for 20 minutes
Western Blot (WB)	2-4ug/ml	

Product Details

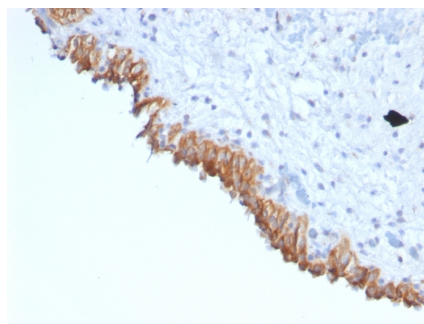
Clone	MAML2/1302
Gene Name	MAML2
Immunogen	Recombinant human MAML2 fragment
Host	Mouse
Clonality	Monoclonal
Isotype / Light Chain	IgG2a / Kappa
Mol. Weight of Antigen	125kDa
Cellular Localization	Nucleus speckle
Species Reactivity	Human
Positive Control	MCF-7 cells. Pancreas or Placenta. Bladder or Colon Carcinoma.

*Optimal dilution for a specific application should be determined.

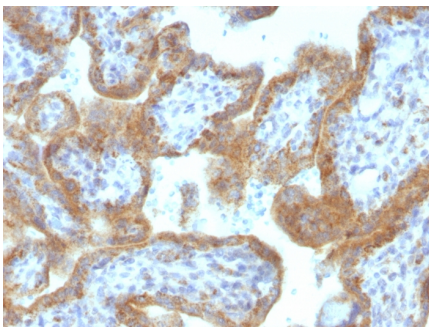
Product Images for MAML2 (Mastermind Like Transcriptional Coactivator 2) Antibody



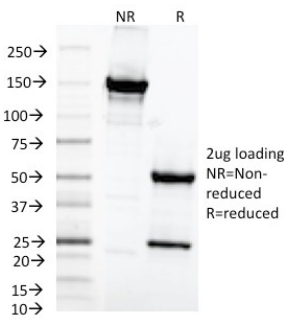
Formalin-fixed, paraffin-embedded human Colon Carcinoma stained with MAML2 Monoclonal Antibody (MAML2/1302).



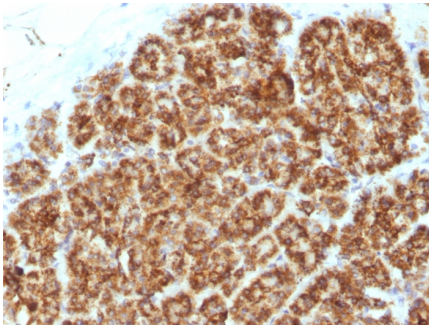
Formalin-fixed, paraffin-embedded human Bladder Carcinoma stained with MAML2 Monoclonal Antibody (MAML2/1302).



Formalin-fixed, paraffin-embedded human Placenta stained with MAML2 Monoclonal Antibody (MAML2/1302).



SDS-PAGE Analysis Purified MAML2 Monoclonal Antibody (MAML2/1302). Confirmation of Purity and Integrity of Antibody.



Formalin-fixed, paraffin-embedded human Pancreas stained with MAML2 Monoclonal Antibody (MAML2/1302).

Specificity & Comments

MAML2 (mastermind-like protein 2), also known as MAM2, MAM3 or MLLMAML2, is a nuclear speckle protein that acts as a transcriptional co-activator for Notch receptors. The Notch signaling pathway influences cell fate by regulating the ability of precursor cells to properly respond to developmental signals. MAML2 is a member of the mastermind-like family of proteins that are human homologs of the *Drosophila melanogaster* mastermind protein. Through its N-terminal region, MAML2 interacts with the ankyrin repeats of the Notch proteins Notch 1, Notch 2, Notch 3 and Notch 4. This interaction leads to formation of a DNA-binding complex with the Notch proteins and RBP-J a complex that can then induce HES1 gene expression. While the N-terminal domain of MAML2 is essential for proper Notch binding, the C-terminal domain of MAML2 is essential for transcriptional activation. A chromosomal aberration involving the gene encoding MAML2 is implicated in mucoepidermoid carcinomas, clear cell hidradenomas and benign Warthin tumors.

Limitations and Warranty

This antibody is available for research use only and is not approved for use in diagnosis. There are no warranties, expressed or implied, which extend beyond this description. Company is not liable for any personal injury or economic loss resulting from this product.

Supplied As

200ug/ml of Ab Purified from Bioreactor Concentrate by Protein A/G. Prepared in 10mM PBS with 0.05% BSA & 0.05% azide. Also available WITHOUT BSA & azide at 1.0mg/ml.

Storage and Stability

Antibody with azide - store at 2 to 8°C. Antibody without azide - store at -20 to -80°C. Antibody is stable for 24 months. Non-hazardous. No MSDS required.

Research Areas

Developmental Biology, Infectious Disease, Signal Transduction, Transcription Factors