

## Insulinoma Associated 2 / INSM2 Antibody

Mouse Monoclonal Antibody [Clone INSM2/4291]

Catalog No	Format	Size
84684-MSM1-P0	Purified Ab with BSA and Azide at 200ug/ml	20 ug
84684-MSM1-P1	Purified Ab with BSA and Azide at 200ug/ml	100 ug
84684-MSM1-P1ABX	Purified Ab WITHOUT BSA and Azide at 1.0mg/ml	100 ug

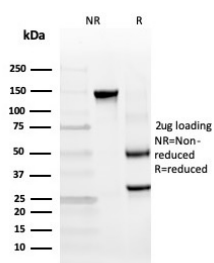
Applications	Tested Dillution	Note
Immunohistochemistry (IHC)	1-2ug/ml	30 min at RT. Staining of formalin-fixed tissues requires heating tissue sections in 10mM Tris with 1mM EDTA, pH 9.0, for 45 min at 95°C followed by cooling at RT for 20 minutes

### Product Details

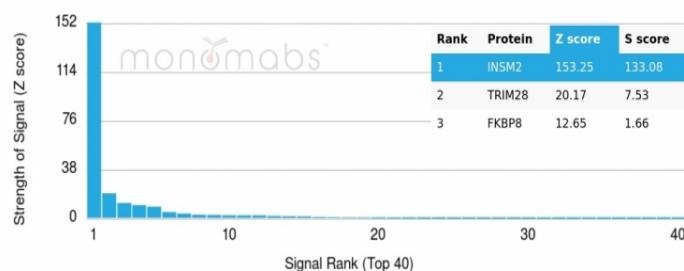
Clone	INSM2/4291
Gene Name	INSM2
Immunogen	Recombinant fragment of human INSM2 protein (around aa 432-540) (exact sequence is proprietary)
Host	Mouse
Clonality	Monoclonal
Isotype / Light Chain	IgG1 / Kappa
Mol. Weight of Antigen	58kDa
Cellular Localization	Cytoplasm, Nucleus
Species Reactivity	Human
Positive Control	Human pancreas tissue.

\*Optimal dilution for a specific application should be determined.

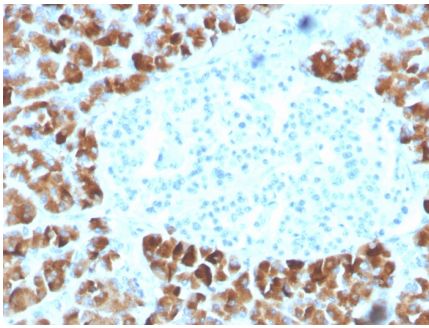
### Product Images for Insulinoma Associated 2 / INSM2 Antibody



SDS-PAGE Analysis of Purified INSM2 Mouse Monoclonal Antibody (INSM2/4291). Confirmation of Integrity and Purity of Antibody.



Analysis of Protein Array containing more than 19,000 full-length human proteins using INSM2 Mouse Monoclonal Antibody (INSM2/4291). Z- and S- Score: The Z-score represents the strength of a signal that a monoclonal antibody (MAb) (in combination with a fluorescently-tagged anti-IgG secondary antibody) produces when binding to a particular protein on the HuProt™ array. Z-scores are described in units of standard deviations (SD's) above the mean value of all signals generated on that array. If targets on HuProt™ are arranged in descending order of the Z-score, the S-score is the difference (also in units of SD's) between the Z-score. S-score therefore represents the relative target specificity of a MAb to its intended target. A MAb is considered to specific to its intended target, if the MAb has an S-score of at least 2.5. For example, if a MAb binds to protein X with a Z-score of 43 and to protein Y with a Z-score of 14, then the S-score for the binding of that MAb to protein X is equal to 29.



Formalin-fixed, paraffin-embedded human pancreas stained with INSM2 Mouse Monoclonal Antibody (INSM2/4291).

---

### Specificity & Comments

IA-6, also known as insulinoma-associated 2 or INSM2, is related to IA-1 (INSM1), a zinc-finger factor that is expressed in the developing nervous system. While the exact function of IA-6 is not known, other related insulinoma-associated proteins such as IA-2 are major autoantigens in type 1 diabetes. The homology exhibited by IA-6 to IA-1 has led to speculation that IA-6 may also play a role in the regulation of gene transcription. INSM2 may function as a growth suppressor or tumor suppressor in liver cells and in certain neurons.

---

### Limitations and Warranty

This antibody is available for research use only and is not approved for use in diagnosis. There are no warranties, expressed or implied, which extend beyond this description. Company is not liable for any personal injury or economic loss resulting from this product.

---

### Supplied As

200ug/ml of Ab purified from Bioreactor Concentrate by Protein A/G. Prepared in 10mM PBS with 0.05% BSA & 0.05% azide. Also available WITHOUT BSA & azide at 1.0mg/ml.

---

### Storage and Stability

Antibody with azide - store at 2 to 8 °C. Antibody without azide - store at -20 to -80 °C. Antibody is stable for 24 months. Non-hazardous. No MSDS required.

---