

## Recombinant Prostein (p501S) / Solute Carrier Family 45 Member 3 (SLC45A3) Antibody

Rabbit Monoclonal Antibody [Clone SLC45A3/4965R]

Catalog No	Format	Size
85414-RBM5-P0	Purified Ab with BSA and Azide at 200ug/ml	20 ug
85414-RBM5-P1	Purified Ab with BSA and Azide at 200ug/ml	100 ug
85414-RBM5-P1ABX	Purified Ab WITHOUT BSA and Azide at 1.0mg/ml	100 ug

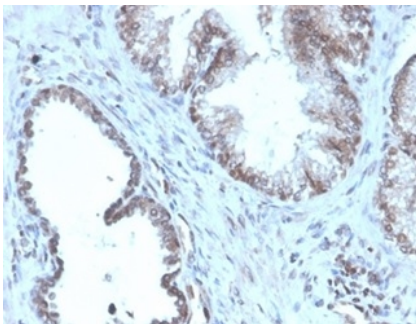
Applications	Tested Dillution	Note
Immunohistochemistry (IHC)	1-2ug/ml	30 min at RT. Staining of formalin-fixed tissues requires heating tissue sections in 10mM Tris with 1mM EDTA, pH 9.0, for 45 min at 95°C followed by cooling at RT for 20 minutes

### Product Details

<b>Clone</b>	SLC45A3/4965R
<b>Gene Name</b>	SLC45A3
<b>Immunogen</b>	Synthesized peptides to the N terminus of human SLC45A3 (prostein) protein
<b>Host</b>	Rabbit
<b>Clonality</b>	Monoclonal
<b>Isotype / Light Chain</b>	IgG / Kappa
<b>Mol. Weight of Antigen</b>	59kDa
<b>Cellular Localization</b>	Membrane
<b>Species Reactivity</b>	Human
<b>Positive Control</b>	Normal prostate or prostate carcinoma.

\*Optimal dilution for a specific application should be determined.

### Product Images for Recombinant Prostein (p501S) / Solute Carrier Family 45 Member 3 (SLC45A3) Antibody



Formalin-fixed, paraffin-embedded human prostate stained with Prostein Recombinant Rabbit Monoclonal Antibody (SLC45A3/4965R).

### Specificity & Comments

Human prostein is a 553 aa protein identified by cDNA library subtraction and subsequent high throughput microarray screening of prostate cancer. Prostein has multiple transmembrane domains. Prostein has been shown to be uniquely expressed in normal and cancerous prostatic tissues. By immunohistochemistry, prostein is expressed in the vast majority of normal and malignant prostatic tissues, regardless of grade and metastatic status. No protein expression is detected in normal and malignant tissue samples representing the great majority of essential tissues and tumors. In particular, prostein is expressed in most of poorly differentiated prostatic carcinoma, including small cell prostate carcinoma. Prostein is more specific and sensitive for prostatic carcinomas than PSA and PSAP.

### Supplied As

200ug/ml of Ab purified from Bioreactor Concentrate by Protein A/G. Prepared in 10mM PBS with 0.05% BSA & 0.05% azide. Also available WITHOUT BSA & azide at 1.0mg/ml.

### Storage and Stability

Antibody with azide - store at 2 to 8 °C. Antibody without azide - store at -20 to -80 °C. Antibody is stable for 24 months. Non-hazardous. No MSDS required.

### Research Areas

Mast Cell Marker

## Limitations and Warranty

This antibody is available for research use only and is not approved for use in diagnosis. There are no warranties, expressed or implied, which extend beyond this description. Company is not liable for any personal injury or economic loss resulting from this product.

---