

## p40 (deltaNp63) (Squamous, Basal & Myoepithelial Cell Marker) Antibody

Catalog No	Format	Size
8626-RBP1-P0	Purified Ab with BSA and Azide at 200ug/ml	20 ug
8626-RBP1-P1	Purified Ab with BSA and Azide at 200ug/ml	100 ug
8626-RBP1-P1ABX	Purified Ab WITHOUT BSA at 1.0mg/ml	100 ug

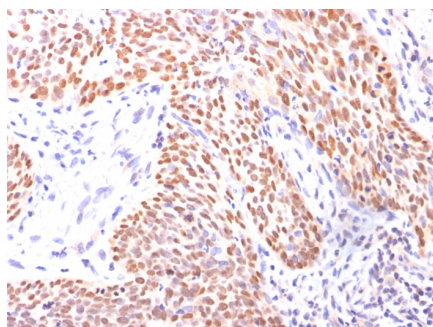
Applications	Tested Dillution	Note
Immunohistochemistry (IHC)	1-2ug/ml	30 min at RT. Staining of formalin-fixed tissues requires heating tissue sections in 10mM Tris with 1mM EDTA, pH 9.0, for 45 min at 95°C followed by cooling at RT for 20 minutes
Western Blot (WB)	2-4ug/ml	

### Product Details

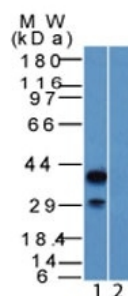
<b>Gene Name</b>	TP63
<b>Immunogen</b>	A synthetic peptide (ENNAQTQFSEPQY) corresponding to aa5-17 of human p40
<b>Host</b>	Rabbit
<b>Clonality</b>	Polyclonal
<b>Isotype / Light Chain</b>	IgG / Kappa
<b>Mol. Weight of Antigen</b>	40kDa
<b>Cellular Localization</b>	Nucleus
<b>Species Reactivity</b>	Cow, Human, Mouse, Rat
<b>Positive Control</b>	HEK293 cells. Prostate Carcinoma or Lung Squamous Cell Carcinoma.

*\*Optimal dilution for a specific application should be determined.*

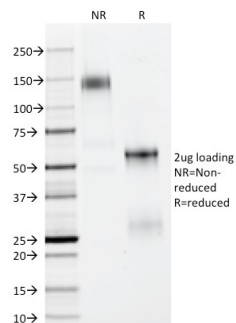
### Product Images for p40 (deltaNp63) (Squamous, Basal & Myoepithelial Cell Marker) Antibody



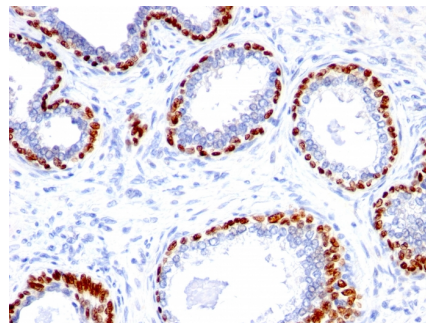
Formalin-fixed, paraffin-embedded Lung Squamous Cell Carcinoma stained with p40 Rabbit Polyclonal Antibody.



Western Blot of HEK293 lysate (1) Absence and (2) Presence of immunizing peptide p40 Rabbit PAb.



SDS-PAGE Analysis of Purified p40 Rabbit Polyclonal Antibody.



Formalin-fixed, paraffin-embedded human Prostate Carcinoma stained with p40 Rabbit Polyclonal Antibody.

### Specificity & Comments

p40 (p63 delta) is a marker recently determined to be highly specific for squamous basal cells in the immunohistochemistry (IHC) application. The current more routinely recommended marker, p63, appears to have less specificity compared to p40, especially on squamous cell tumors. The ability to differentiate between lung adenocarcinoma vs. squamous cell carcinoma is difficult and has bearing on the different therapeutic avenues for each subtype treatment. p63 antibody's ability to distinguish between the tumor types appears to be inferior when compared to p40. The ability to utilize an antibody probe for p40 as a squamous cell marker bolsters its use for future sub-classification of lung cancers, especially by immunohistochemical techniques.

### Limitations and Warranty

This antibody is available for research use only and is not approved for use in diagnosis. There are no warranties, expressed or implied, which extend beyond this description. Company is not liable for any personal injury or economic loss resulting from this product.

### Supplied As

200ug/ml of Ab Purified from rabbit anti-serum by Protein A. Prepared in 10mM PBS with 0.05% BSA & 0.05% azide. Also available WITHOUT BSA at 1.0mg/ml.

### Storage and Stability

Antibody with azide - store at 2 to 8°C. Antibody without azide - store at -20 to -80°C. Antibody is stable for 24 months. Non-hazardous. No MSDS required.

### Research Areas

Apoptosis, Cancer, Basal Cell Marker, Nuclear Marker, Stem Cell Differentiation, Transcription Factors