

## Recombinant BCL10 (MALT-Lymphoma Marker) Antibody

Mouse Monoclonal Antibody [Clone rBL10/411]

Catalog No	Format	Size
8915-MSM4-P0	Purified Ab with BSA and Azide at 200ug/ml	20 ug
8915-MSM4-P1	Purified Ab with BSA and Azide at 200ug/ml	100 ug
8915-MSM4-P1ABX	Purified Ab WITHOUT BSA and Azide at 1.0mg/ml	100 ug

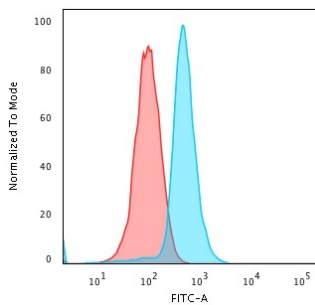
Applications	Tested Dillution	Note
Flow Cytometry (Flow)	1-2ug/million cells	
Immunohistochemistry (IHC)	1-2ug/ml	30 min at RT. Staining of formalin-fixed tissues requires heating tissue sections in 10mM Tris with 1mM EDTA, pH 9.0, for 45 min at 95°C followed by cooling at RT for 20 minutes

### Product Details

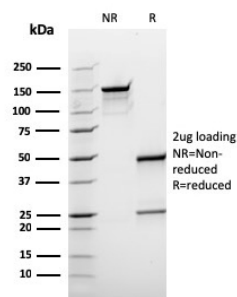
<b>Clone</b>	rBL10/411
<b>Gene Name</b>	BCL10
<b>Immunogen</b>	Human BCL10 recombinant protein (epitope aa122-168)
<b>Host</b>	Mouse
<b>Clonality</b>	Monoclonal
<b>Isotype / Light Chain</b>	IgG1 / Kappa
<b>Mol. Weight of Antigen</b>	33kDa
<b>Cellular Localization</b>	Cytoplasm, Membrane raft, Perinuclear region
<b>Species Reactivity</b>	Human
<b>Positive Control</b>	K562 or HepG2 cells. Human lymphoma.

\*Optimal dilution for a specific application should be determined.

### Product Images for Recombinant BCL10 (MALT-Lymphoma Marker) Antibody



Flow Cytometric Analysis of PFA-fixed K562 cells using BCL10 Recombinant Mouse Monoclonal Antibody (rBL10/411) followed by Goat anti-mouse IgG-CF488 (Blue); Isotype Control (Red),



SDS-PAGE Analysis of Purified BCL10 Recombinant Mouse Monoclonal Antibody (rBL10/411). Confirmation of Purity and Integrity of Antibody.

### Specificity & Comments

BCL10, with an N-terminal caspase recruitment domain (CARD), is found in a number of apoptotic regulatory molecules. It was identified through its direct involvement in t(1;14) of mucosa-associated lymphoid tissue (MALT) lymphoma. Expression of BCL10 was shown to induce NF14 translocation, while 55% of MALT lymphomas lacking this translocation exhibited the same labeling pattern, although at a much lower level.

### Supplied As

200ug/ml of Ab purified from Bioreactor Concentrate by Protein A/G. Prepared in 10mM PBS with 0.05% BSA & 0.05% azide. Also available WITHOUT BSA & azide at 1.0mg/ml.

### Storage and Stability

Antibody with azide - store at 2 to 8°C. Antibody without azide - store at -20 to -80°C. Antibody is stable for 24 months. Non-hazardous. No MSDS required.

### Research Areas

Apoptosis, Autophagy, Immunology

## Limitations and Warranty

This antibody is available for research use only and is not approved for use in diagnosis. There are no warranties, expressed or implied, which extend beyond this description. Company is not liable for any personal injury or economic loss resulting from this product.

---