

## Cyclin E (G1/S-Phase Cyclin) Antibody

Mouse Monoclonal Antibody [Clone CCNE1/2587]

Catalog No	Format	Size
898-MSM2-P0	Purified Ab with BSA and Azide at 200ug/ml	20 ug
898-MSM2-P1	Purified Ab with BSA and Azide at 200ug/ml	100 ug
898-MSM2-P1ABX	Purified Ab WITHOUT BSA and Azide at 1.0mg/ml	100 ug

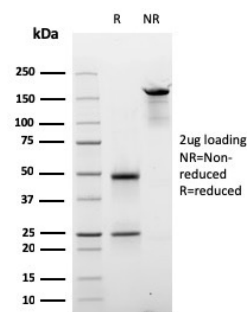
Applications	Tested Dillution	Note
--------------	------------------	------

### Product Details

<b>Clone</b>	CCNE1/2587
<b>Gene Name</b>	CCNE1
<b>Immunogen</b>	Recombinant human Cyclin E (CCNE1) protein fragment (around aa 10-176) (exact sequence is proprietary)
<b>Host</b>	Mouse
<b>Clonality</b>	Monoclonal
<b>Isotype / Light Chain</b>	IgG / Kappa
<b>Mol. Weight of Antigen</b>	53kDa.
<b>Cellular Localization</b>	Nucleus
<b>Species Reactivity</b>	Human
<b>Positive Control</b>	HeLa cells. Breast or Colon Carcinoma.

\*Optimal dilution for a specific application should be determined.

### Product Images for Cyclin E (G1/S-Phase Cyclin) Antibody



SDS-PAGE Analysis of Purified Cyclin E Mouse Monoclonal Antibody (CCNE1/2587). Confirmation of Integrity and Purity of Antibody.

### Specificity & Comments

Cyclin E belongs to the highly conserved cyclin family, whose members exhibit distinct expression and degradation patterns which contribute to the temporal coordination of each mitotic event. Cyclins function as regulators of CDK kinases. Cyclin E forms a complex with and functions as a regulatory subunit of CDK2, whose activity is required for cell cycle G1/S transition. Cyclin E accumulates at the G1-S phase boundary and is degraded as cells progress through S phase. Cyclin E overexpression has been observed in many tumors, which results in chromosome instability, and thus may contribute to tumorigenesis.

### Limitations and Warranty

This antibody is available for research use only and is not approved for use in diagnosis. There are no warranties, expressed or implied, which extend beyond this description. Company is not liable for any personal injury or economic loss resulting from this product.

### Supplied As

200ug/ml of Ab Purified from Bioreactor Concentrate by Protein A/G. Prepared in 10mM PBS with 0.05% BSA & 0.05% azide. Also available WITHOUT BSA & azide at 1.0mg/ml.

### Storage and Stability

Antibody with azide - store at 2 to 8°C. Antibody without azide - store at -20 to -80°C. Antibody is stable for 24 months. Non-hazardous. No MSDS required.

### Research Areas

Cardiovascular, Infectious Disease, Lung Cancer, Nuclear Marker, Signal Transduction, Transcription Factors