

PDZ and LIM Domain 1 Antibody

Mouse Monoclonal Antibody [Clone CPTC-PDLIM1-1]

Catalog No	Format	Size
9124-MSM1-P0	Purified Ab with BSA and Azide at 200ug/ml	20 ug
9124-MSM1-P1	Purified Ab with BSA and Azide at 200ug/ml	100 ug
9124-MSM1-P1ABX	Purified Ab WITHOUT BSA and Azide at 1.0mg/ml	100 ug

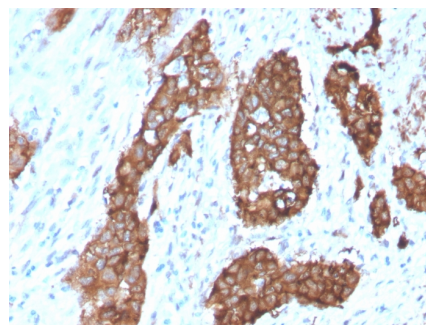
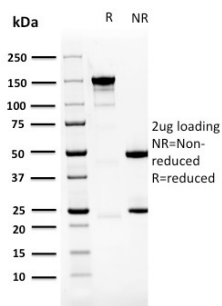
Applications	Tested Dillution	Note
Immunohistochemistry (IHC)	1-2ug/ml	30 min at RT. Staining of formalin-fixed tissues requires heating tissue sections in 10mM Tris with 1mM EDTA, pH 9.0, for 45 min at 95°C followed by cooling at RT for 20 minutes
Western Blot (WB)	2-4ug/ml	

Product Details

Clone	CPTC-PDLIM1-1
Gene Name	PDLIM1
Immunogen	Recombinant human full-length PDLIM1 protein
Host	Mouse
Clonality	Monoclonal
Isotype / Light Chain	IgG1 / Kappa
Mol. Weight of Antigen	36kDa
Cellular Localization	Cytoplasm, Cytoskeleton, Myofibril, Sarcomere, Z line
Species Reactivity	Human
Positive Control	colon or spleen., HepG2 cells and extracts from Jurkat. Human heart

*Optimal dilution for a specific application should be determined.

Product Images for PDZ and LIM Domain 1 Antibody



SDS-PAGE Analysis of Purified PDZ and LIM Domain 1 Mouse Monoclonal Antibody (PDLIM-1). Confirmation of Purity and Integrity of Antibody.

Formalin-fixed, paraffin-embedded human Breast Carcinoma stained with PDZ and LIM Domain 1 Mouse Monoclonal Antibody (PDLIM-1).

Specificity & Comments

CLP36, also known as PDLIM1, CLIM1 or Elfin, is a 329 amino acid cytoplasmic protein that associates with actin stress fibers at the cytoskeleton. Expressed at high levels in skeletal muscle and heart and at lower levels in colon, small intestine, spleen, lung, placenta, kidney, liver, thymus and pancreas, CLP36 functions as a cytoskeletal protein that is thought to act as an adaptor, bringing target proteins to the cytoskeleton. Specifically, CLP36 interacts with Clik1 (-actinin-1, thereby facilitating the association of Clik1 with actin stress fibers. CLP36 contains one PDZ domain and one LIM zinc-binding domain through which it conveys its protein-protein binding capabilities. Human CLP36 shares 88% sequence similarity with its rat counterpart, suggesting a conserved function between species.

Limitations and Warranty

This antibody is available for research use only and is not approved for use in diagnosis. There are no warranties, expressed or implied, which extend beyond this description. Company is not liable for any personal injury or economic loss resulting from this product.

Supplied As

200ug/ml of Ab Purified from Bioreactor Concentrate by Protein A/G. Prepared in 10mM PBS with 0.05% BSA & 0.05% azide. Also available WITHOUT BSA & azide at 1.0mg/ml.

Storage and Stability

Antibody with azide - store at 2 to 8°C. Antibody without azide - store at -20 to -80°C. Antibody is stable for 24 months. Non-hazardous. No MSDS required.

Research Areas

Cardiovascular
