

## CD2 / Lymphocyte Function Antigen 2 (LFA-2) Antibody

Mouse Monoclonal Antibody [Clone UMCD2]

Catalog No	Format	Size
914-MSM2-P0	Purified Ab with BSA and Azide at 200ug/ml	20 ug
914-MSM2-P1	Purified Ab with BSA and Azide at 200ug/ml	100 ug
914-MSM2-P1ABX	Purified Ab WITHOUT BSA and Azide at 1.0mg/ml	100 ug

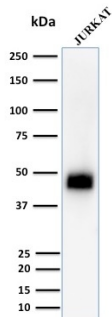
Applications	Tested Dillution	Note
Flow Cytometry (Flow)	1-2ug/million cells	
Immunofluorescence (IF)	1-3ug/ml	

### Product Details

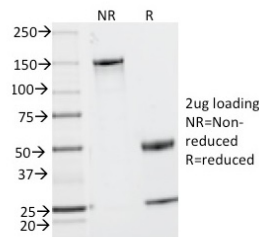
<b>Clone</b>	UMCD2
<b>Gene Name</b>	CD2
<b>Immunogen</b>	Human Thymocytes/Sezary T cells
<b>Host</b>	Mouse
<b>Clonality</b>	Monoclonal
<b>Isotype / Light Chain</b>	IgG2a / Kappa
<b>Mol. Weight of Antigen</b>	~50kDa
<b>Cellular Localization</b>	Cell membrane
<b>Species Reactivity</b>	Human
<b>Positive Control</b>	293T or Jurkat cells., Molt-4

\*Optimal dilution for a specific application should be determined.

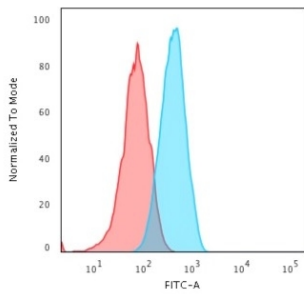
### Product Images for CD2 / Lymphocyte Function Antigen 2 (LFA-2) Antibody



Western blot analysis of Jurkat cell lysate using CD2 Mouse Monoclonal Antibody (UMCD2).



SDS-PAGE Analysis of Purified CD2 Mouse Monoclonal Antibody (UMCD2). Confirmation of Integrity and Purity of Antibody.



Flow Cytometric Analysis of MOLT-4 cells using CD2 Mouse Monoclonal Antibody (UMCD2) followed by goat anti-mouse IgG-CF488 (blue); isotype control (red).

### Specificity & Comments

CD2 interacts through its amino-terminal domain with the extracellular domain of CD58 (also designated CD2 ligand) to mediate cell adhesion. CD2/CD58 binding can enhance antigen-specific T cell activation. CD2 is a transmembrane glycoprotein that is expressed on peripheral blood T lymphocytes, NK cells and thymocytes. CD58 is a heavily glycosylated protein with a broad tissue distribution in hematopoietic and other cells, including endothelium. Interaction between CD2 and its counter receptor LFA3 (CD58) on opposing cells optimizes immune system recognition, thereby facilitating communication between helper T lymphocytes and antigen-presenting cells, as well as between cytolytic effectors and target cells.

### Limitations and Warranty

This antibody is available for research use only and is not approved for use in diagnosis. There are no warranties, expressed or implied, which extend beyond this description. Company is not liable for any personal injury or economic loss resulting from this product.

### Supplied As

200ug/ml of Ab purified from Bioreactor Concentrate by Protein A/G. Prepared in 10mM PBS with 0.05% BSA & 0.05% azide. Also available WITHOUT BSA & azide at 1.0mg/ml.

### Storage and Stability

Antibody with azide - store at 2 to 8 °C. Antibody without azide - store at -20 to -80 °C. Antibody is stable for 24 months. Non-hazardous. No MSDS required.

### Research Areas

AKT Signaling, B Cell Markers, Hematopoietic Stem Cells