



CD2 / Lymphocyte Function Antigen 2 (LFA-2) Antibody

Mouse Monoclonal Antibody [Clone BH1]

Catalog No	Format	Size
914-MSM3-P0	Purified Ab with BSA and Azide at 200ug/ml	20 ug
914-MSM3-P1	Purified Ab with BSA and Azide at 200ug/ml	100 ug
914-MSM3-P1ABX	Purified Ab WITHOUT BSA and Azide at 1.0mg/ml	100 ug

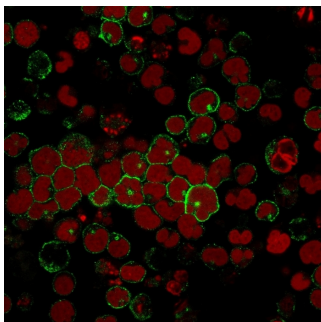
Applications	Tested Dillution	Note
Flow Cytometry (Flow)	1-2ug/million cells	
Immunofluorescence (IF)	1-3ug/ml	

Product Details

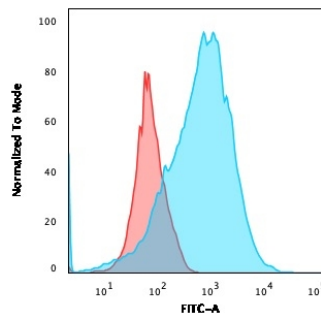
Clone	BH1
Gene Name	CD2
Immunogen	Human CD2 protein
Host	Mouse
Clonality	Monoclonal
Isotype / Light Chain	IgG2b
Mol. Weight of Antigen	~50kDa
Cellular Localization	Cell membrane, Cell surface
Species Reactivity	Human
Positive Control	293T or Jurkat cells. Lymph node and tonsil.

*Optimal dilution for a specific application should be determined.

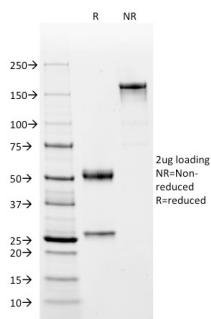
Product Images for CD2 / Lymphocyte Function Antigen 2 (LFA-2) Antibody



Immunofluorescence staining of MOLT-4 cells using CD2 Mouse Monoclonal Antibody (BH1) followed by goat anti-Mouse IgG conjugated to CF488 (green). Nuclei are stained with Reddot.



Flow Cytometric Analysis of MOLT-4 cells using CD2 Mouse Monoclonal Antibody (BH1) followed by goat anti-Mouse IgG-CF488 (Blue); Isotype Control (Red).



SDS-PAGE Analysis of Purified CD2 Mouse Monoclonal Antibody (BH1). Confirmation of Integrity and Purity of Antibody.

Specificity & Comments

CD2 interacts through its amino-terminal domain with the extracellular domain of CD58 (also designated CD2 ligand) to mediate cell adhesion. CD2/CD58 binding can enhance antigen-specific T cell activation. CD2 is a transmembrane glycoprotein that is expressed on peripheral blood T lymphocytes, NK cells and thymocytes. CD58 is a heavily glycosylated protein with a broad tissue distribution in hematopoietic and other cells, including endothelium. Interaction between CD2 and its counter receptor LFA3 (CD58) on opposing cells optimizes immune system recognition, thereby facilitating communication between helper T lymphocytes and antigen-presenting cells, as well as between cytolytic effectors and target cells.

Limitations and Warranty

This antibody is available for research use only and is not approved for use in diagnosis. There are no warranties, expressed or implied, which extend beyond this description. Company is not liable for any personal injury or economic loss resulting from this product.

Supplied As

200ug/ml of Ab Purified from Bioreactor Concentrate by Protein A/G. Prepared in 10mM PBS with 0.05% BSA & 0.05% azide. Also available WITHOUT BSA & azide at 1.0mg/ml.

Storage and Stability

Antibody with azide - store at 2 to 8°C. Antibody without azide - store at -20 to -80°C. Antibody is stable for 24 months. Non-hazardous. No MSDS required.

Research Areas

AKT Signaling, B Cell Markers, Hematopoietic Stem Cells