

## CD3e (T-Cell Marker) Antibody

Mouse Monoclonal Antibody [Clone OKT3]

Catalog No	Format	Size
916-MSM4-P0	Purified Ab with BSA and Azide at 200ug/ml	20 ug
916-MSM4-P1	Purified Ab with BSA and Azide at 200ug/ml	100 ug
916-MSM4-P1ABX	Purified Ab WITHOUT BSA at 1.0mg/ml	100 ug

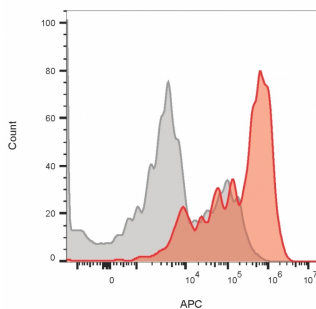
Applications	Tested Dillution	Note
Flow Cytometry (Flow)	1-2ug/million cells	
Immunofluorescence (IF)	1-3ug/ml	
Immunohistochemistry (IHC)	1-2ug/ml	30 min at RT. Staining of formalin-fixed tissues requires heating tissue sections in 10mM Tris with 1mM EDTA, pH 9.0, for 45 min at 95°C followed by cooling at RT for 20 minutes

### Product Details

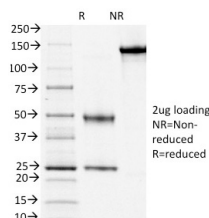
<b>Clone</b>	OKT3
<b>Gene Name</b>	CD3E
<b>Immunogen</b>	Human PBMC s
<b>Host</b>	Mouse
<b>Clonality</b>	Monoclonal
<b>Isotype / Light Chain</b>	IgG2a / Kappa
<b>Mol. Weight of Antigen</b>	23kDa
<b>Cellular Localization</b>	Cell membrane
<b>Species Reactivity</b>	Human
<b>Positive Control</b>	Jurkat cells or PBMCs. Tonsil and lymph node

\*Optimal dilution for a specific application should be determined.

### Product Images for CD3e (T-Cell Marker) Antibody



Flow cytometry of lymphocyte gated PBMCs stained with CD3 mouse monoclonal antibody (OKT3) (red) or isotype control (gray) followed by goat anti-mouse CF640R (red)



SDS-PAGE Analysis of Purified CD3e Mouse Monoclonal Antibody (OKT3). Confirmation of Purity and Integrity of Antibody.

### **Specificity & Comments**

Recognizes the epsilon-chain of CD3, which consists of five different polypeptide chains (designated as gamma, delta, epsilon, zeta, and eta) with MW ranging from 16-28kDa. It is found on all mature T-lymphocytes, NK, T-cells, and some thymocytes. CD3, also known as T3, is a member of the immunoglobulin superfamily that plays a role in antigen recognition, signal transduction, and T cell activation. It is expressed, typically at high levels, on peripheral T cells and majority of T cell neoplasms. Thymocytes express CD3 at different level on the cell surface in the course of differentiation and, in cortical thymus, CD3 is predominantly Intracytoplasmic. This MAb has been reported to have potent immunosuppressive properties in vivo and has been proven effective in the treatment of renal, heart and liver allograft rejection.

---

### **Limitations and Warranty**

This antibody is available for research use only and is not approved for use in diagnosis. There are no warranties, expressed or implied, which extend beyond this description. Company is not liable for any personal injury or economic loss resulting from this product.

---

### **Supplied As**

200ug/ml of Ab purified from rabbit anti-serum by Protein A. Prepared in 10mM PBS with 0.05% BSA & 0.05% azide. Also available WITHOUT BSA at 1.0mg/ml.

---

### **Storage and Stability**

Antibody with azide - store at 2 to 8 °C. Antibody without azide - store at -20 to -80 °C. Antibody is stable for 24 months. Non-hazardous. No MSDS required.

---

### **Research Areas**

Cardiovascular, Immunology, Hematopoietic Stem Cells, PD-1 blockade immunotherapy

---