

CD3e (T-Cell Marker) Antibody

Mouse Monoclonal Antibody [Clone RIV9]

Catalog No	Format	Size
916-MSM6-P0	Purified Ab with BSA and Azide at 200ug/ml	20 ug
916-MSM6-P1	Purified Ab with BSA and Azide at 200ug/ml	100 ug
916-MSM6-P1ABX	Purified Ab WITHOUT BSA at 1.0mg/ml	100 ug

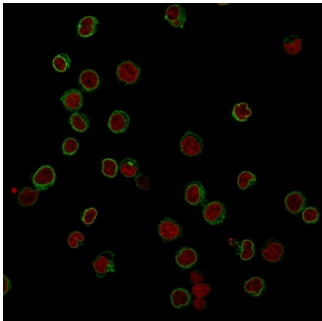
Applications	Tested Dillution	Note
Flow Cytometry (Flow)	1-2ug/million cells	
Immunofluorescence (IF)	1-3ug/ml	

Product Details

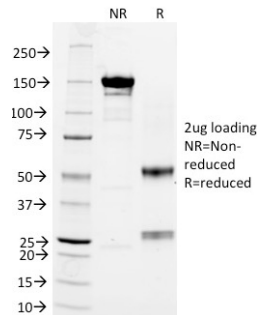
Clone	RIV9
Gene Name	CD3E
Immunogen	Human peripheral lymphocytes
Host	Mouse
Clonality	Monoclonal
Isotype / Light Chain	IgG3 / Kappa
Mol. Weight of Antigen	20kDa
Cellular Localization	Cell membrane
Species Reactivity	Human, Mouse, Rat
Positive Control	Jurkat cells. Tonsil and lymph node.

*Optimal dilution for a specific application should be determined.

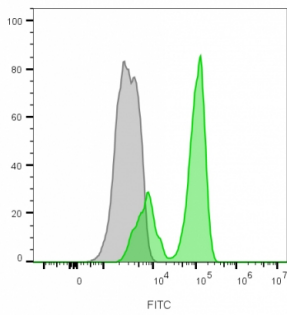
Product Images for CD3e (T-Cell Marker) Antibody



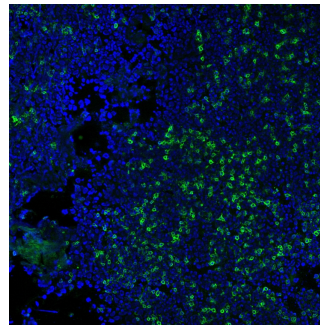
Immunofluorescence Analysis of Jurkat cells labeling CD3e with CD3e Mouse Monoclonal Antibody (RIV9) followed by Goat anti-Mouse IgG-CF488 (Green). The nuclear counterstain is Reddot (Red).



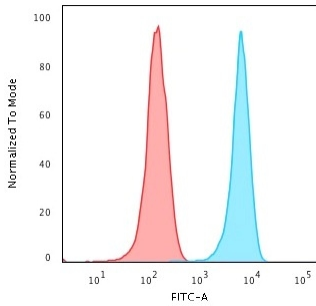
SDS-PAGE Analysis CD3e Mouse Monoclonal Antibody (RIV9). Confirmation of Integrity and Purity of Antibody.



Flow cytometry analysis of lymphocyte-gated PBMCs unstained (gray) or stained with CF488A-labeled CD3 mouse monoclonal antibody (RIV9) (green)



Immunofluorescence Analysis of methanol-fixed human tonsil cryosection stained with CF488A CD3e clone RIV9 (green), mounted in EverBrite Mounting Medium with DAPI (nuclei, blue).



Flow Cytometric Analysis of Jurkat cells using CD3e Mouse Monoclonal Antibody (RIV9) followed by Goat anti-Mouse IgG-CF488 (Blue); Isotype Control (Red).

Specificity & Comments

Recognizes the epsilon-chain of CD3, which consists of five different polypeptide chains (designated as gamma, delta, epsilon, zeta, and eta) with MW ranging from 16-28kDa. It is found on all mature T-lymphocytes, NK, T-cells, and some thymocytes. CD3, also known as T3, is a member of the immunoglobulin superfamily that plays a role in antigen recognition, signal transduction, and T cell activation. It is expressed, typically at high levels, on peripheral T cells and majority of T cell neoplasms. Thymocytes express CD3 at different level on the cell surface in the course of differentiation and, in cortical thymus, CD3 is predominantly Intracytoplasmic. This MAb is particularly useful for induction of T cell activation in vitro and in vivo due to its unusual IgG3 isotype.

Limitations and Warranty

This antibody is available for research use only and is not approved for use in diagnosis. There are no warranties, expressed or implied, which extend beyond this description. Company is not liable for any personal injury or economic loss resulting from this product.

Supplied As

200ug/ml of Ab Purified from rabbit anti-serum by Protein A. Prepared in 10mM PBS with 0.05% BSA & 0.05% azide. Also available WITHOUT BSA at 1.0mg/ml.

Storage and Stability

Antibody with azide - store at 2 to 8°C. Antibody without azide - store at -20 to -80°C. Antibody is stable for 24 months. Non-hazardous. No MSDS required.

Research Areas

Cardiovascular, Immuno Oncology, Immunology, Hematopoietic Stem Cells, PD-1 blockade immunotherapy