

## CD3e (T-Cell Marker) Antibody

Catalog No	Format	Size
916-RBP1-P0	Purified Ab with BSA and Azide at 200ug/ml	20 ug
916-RBP1-P1	Purified Ab with BSA and Azide at 200ug/ml	100 ug
916-RBP1-P1ABX	Purified Ab WITHOUT BSA at 1.0mg/ml	100 ug

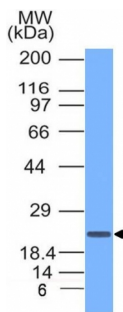
Applications	Tested Dillution	Note
Western Blot (WB)	2-4ug/ml	

### Product Details

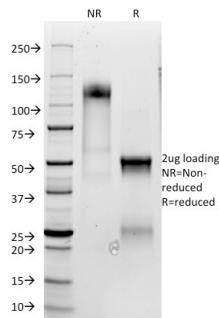
<b>Gene Name</b>	CD3E
<b>Immunogen</b>	A synthetic peptide aa156-168 (ERPPVPNPDYEP) from human CD3e
<b>Host</b>	Rabbit
<b>Clonality</b>	Polyclonal
<b>Isotype / Light Chain</b>	IgG / Kappa
<b>Mol. Weight of Antigen</b>	20kDa
<b>Cellular Localization</b>	Cell membrane
<b>Species Reactivity</b>	Human
<b>Positive Control</b>	Jurkat cells. Tonsil and lymph node.

\*Optimal dilution for a specific application should be determined.

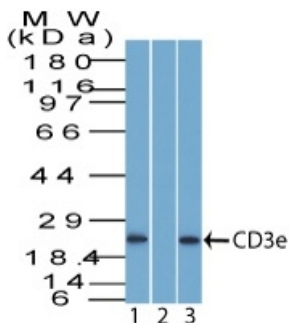
### Product Images for CD3e (T-Cell Marker) Antibody



Western Blot of Jurkat cell lysate using CD3e Rabbit Polyclonal Antibody.



SDS-PAGE Analysis of Purified CD3e Rabbit Polyclonal Antibody Confirmation of Purity and Integrity of Antibody.



Western blot of CD3e in human Jurkat cells (1) absence and (2) presence of immunizing peptide. (3) Mouse thymus probed with CD3e Rabbit Polyclonal Antibody.

### **Specificity & Comments**

Recognizes the epsilon-chain of CD3, which consists of five different polypeptide chains (designated as gamma, delta, epsilon, zeta, and eta) with MW ranging from 16-28kDa. The CD3 complex is closely associated at the lymphocyte cell surface with the T cell antigen receptor (TCR). Reportedly, CD3 complex is involved in signal transduction to the T cell interior following antigen recognition. The CD3 antigen is first detectable in early thymocytes and probably represents one of the earliest signs of commitment to the T cell lineage. In cortical thymocytes, CD3 is predominantly intracytoplasmic. However, in medullary thymocytes, it appears on the T cell surface. CD3 antigen is a highly specific marker for T cells, and is present in majority of T cell neoplasms.

---

### **Limitations and Warranty**

This antibody is available for research use only and is not approved for use in diagnosis. There are no warranties, expressed or implied, which extend beyond this description. Company is not liable for any personal injury or economic loss resulting from this product.

---

### **Supplied As**

200ug/ml of Ab Purified from rabbit anti-serum by Protein A. Prepared in 10mM PBS with 0.05% BSA & 0.05% azide. Also available WITHOUT BSA at 1.0mg/ml.

---

### **Storage and Stability**

Antibody with azide - store at 2 to 8°C. Antibody without azide - store at -20 to -80°C. Antibody is stable for 24 months. Non-hazardous. No MSDS required.

---

### **Research Areas**

Cardiovascular, Hematopoietic Stem Cells, Immuno Oncology, Immunology, PD-1 blockade immunotherapy

---