

## CD8A (Cytotoxic-&Suppressor T-Cell Marker) Antibody

Mouse Monoclonal Antibody [Clone C8/468]

Catalog No	Format	Size
925-MSM1-P0	Purified Ab with BSA and Azide at 200ug/ml	20 ug
925-MSM1-P1	Purified Ab with BSA and Azide at 200ug/ml	100 ug
925-MSM1-P1ABX	Purified Ab WITHOUT BSA and Azide at 1.0mg/ml	100 ug

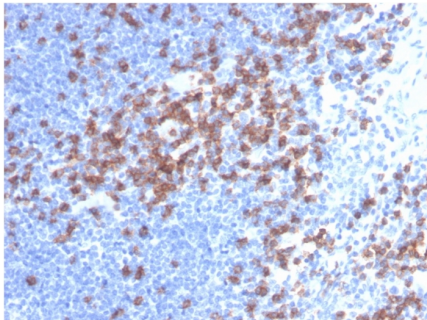
Applications	Tested Dillution	Note
Flow Cytometry (Flow)	1-2ug/million cells	
Immunofluorescence (IF)	1-3ug/ml	
Immunohistochemistry (IHC)	1-2ug/ml	30 min at RT. Staining of formalin-fixed tissues requires heating tissue sections in 10mM Tris with 1mM EDTA, pH 9.0, for 45 min at 95°C followed by cooling at RT for 20 minutes

### Product Details

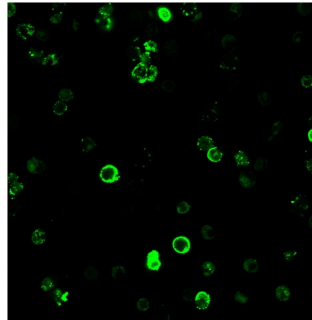
<b>Clone</b>	C8/468
<b>Gene Name</b>	CD8A
<b>Immunogen</b>	Human CD8 recombinant protein
<b>Host</b>	Mouse
<b>Clonality</b>	Monoclonal
<b>Isotype / Light Chain</b>	IgG1
<b>Mol. Weight of Antigen</b>	32kDa
<b>Cellular Localization</b>	Cell membrane, Cell surface, Secreted
<b>Species Reactivity</b>	Human
<b>Positive Control</b>	HuT78 or hPBL. Tonsil.

\*Optimal dilution for a specific application should be determined.

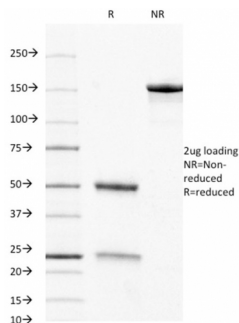
### Product Images for CD8A (Cytotoxic-&Suppressor T-Cell Marker) Antibody



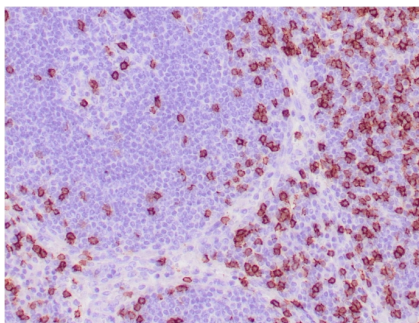
Formalin-fixed, paraffin-embedded human lymph node stained with CD8a Mouse Monoclonal Antibody (C8/468).



Immunofluorescence staining of human PBMC cells using CD8 Mouse Monoclonal Antibody (C8/468) followed by goat anti-mouse IgG-CF488 (green).



SDS-PAGE Analysis of Purified CD8 Mouse Monoclonal Antibody (C8/468). Confirmation of Integrity and Purity of Antibody.



Formalin-fixed, paraffin-embedded human tonsil stained with CD8 Mouse Monoclonal Antibody (C8/468).

### Specificity & Comments

CD8 is a cell surface receptor expressed either as a heterodimer with the CD8 beta chain (CD8 alpha/beta) or as a homodimer (CD8 alpha/alpha). A majority of thymocytes and a subpopulation of mature T cells and NK cells express CD8a. CD8 binds to MHC class 1 and through its association with protein tyrosine kinase p56lck plays a role in T cell development and activation of mature T cells. For mature T-cells, CD4 and CD8 are mutually exclusive, so anti-CD8, generally used in conjunction with anti-CD4. It is a useful marker for distinguishing helper/inducer T-lymphocytes, and most peripheral T-cell lymphomas are CD4+/CD8-. Anaplastic large cell lymphoma is usually CD4+ and CD8-, and in T-lymphoblastic lymphoma/leukemia, CD4 and CD8 are often co-expressed. CD8 is also found in littoral cell angioma of the spleen.

### Limitations and Warranty

This antibody is available for research use only and is not approved for use in diagnosis. There are no warranties, expressed or implied, which extend beyond this description. Company is not liable for any personal injury or economic loss resulting from this product.

### Supplied As

200ug/ml of Ab purified from Bioreactor Concentrate by Protein A/G. Prepared in 10mM PBS with 0.05% BSA & 0.05% azide. Also available WITHOUT BSA & azide at 1.0mg/ml.

### Storage and Stability

Antibody with azide - store at 2 to 8 °C. Antibody without azide - store at -20 to -80 °C. Antibody is stable for 24 months. Non-hazardous. No MSDS required.

### Research Areas

Cardiovascular, Immunology, Dendritic Cell Marker, Hematopoietic Stem Cells, PD-1 blockade immunotherapy