

CD20 / MS4A1 (B-Cell Marker) Antibody

Mouse Monoclonal Antibody [Clone 93-1B3]

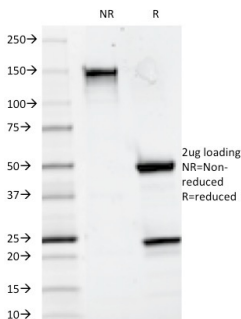
Catalog No	Format	Size
931-MSM5-P0	Purified Ab with BSA and Azide at 200ug/ml	20 ug
931-MSM5-P1	Purified Ab with BSA and Azide at 200ug/ml	100 ug
931-MSM5-P1ABX	Purified Ab WITHOUT BSA and Azide at 1.0mg/ml	100 ug

Applications	Tested Dillution	Note
Flow Cytometry (Flow)	1-2ug/million cells	
Immunofluorescence (IF)	1-3ug/ml	

Product Details	
Clone	93-1B3
Gene Name	MS4A1
Immunogen	Stimulated human leukocytes
Host	Mouse
Clonality	Monoclonal
Isotype / Light Chain	IgG1 / Kappa
Mol. Weight of Antigen	33-37kDa
Cellular Localization	Cell membrane
Species Reactivity	Human
Positive Control	Daudi, Raji and U266 and human lymphocytes. Lymph nodes and tonsils.

*Optimal dilution for a specific application should be determined.

Product Images for CD20 / MS4A1 (B-Cell Marker) Antibody



SDS-PAGE Analysis of Purified CD20 Mouse Monoclonal Antibody (93-1B3).
Confirmation of Integrity and Purity of Antibody.

Specificity & Comments

Recognizes a protein of 30-33kDa, which is identified as CD20 (Workshop V; Code CD20.4). It is a non-Ig differentiation antigen of B-cells and its expression is restricted to normal and neoplastic B-cells, being absent from all other leukocytes and tissues. CD20 is expressed by pre B-cells and persists during all stages of B-cell maturation but is lost upon terminal differentiation into plasma cells. The protein passes through the membrane 4 times with both ends in cytoplasm and exposes one short and one longer loop to the external environment. CD20 is not glycosylated in resting B-cells and its cytoplasmic domains are differentially phosphorylated upon activation. It acts as calcium channel involved in B cell activation and cell cycle progression.

Limitations and Warranty

This antibody is available for research use only and is not approved for use in diagnosis. There are no warranties, expressed or implied, which extend beyond this description. Company is not liable for any personal injury or economic loss resulting from this product.

Supplied As

200ug/ml of Ab Purified from Bioreactor Concentrate by Protein A/G. Prepared in 10mM PBS with 0.05% BSA & 0.05% azide. Also available WITHOUT BSA & azide at 1.0mg/ml.

Storage and Stability

Antibody with azide - store at 2 to 8°C. Antibody without azide - store at -20 to -80°C. Antibody is stable for 24 months. Non-hazardous. No MSDS required.

Research Areas

B Cell Markers, Hematopoietic Stem Cells