

Recombinant CD20 / MS4A1 (B-Cell Marker) Antibody

Rabbit Monoclonal Antibody [Clone IGEL/6850R]

| Catalog No | Format | Size |
|-----------------|---|--------|
| 931-RBM17-P0 | Purified Ab with BSA and Azide at 200ug/ml | 20 ug |
| 931-RBM17-P1 | Purified Ab with BSA and Azide at 200ug/ml | 100 ug |
| 931-RBM17-P1ABX | Purified Ab WITHOUT BSA and Azide at 1.0mg/ml | 100 ug |

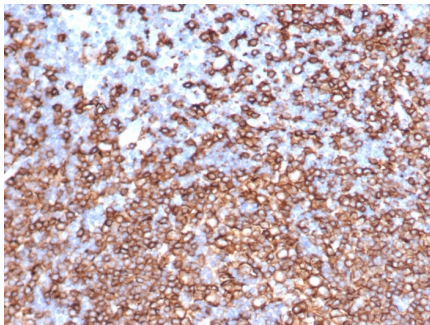
| Applications | Tested Dillution | Note |
|----------------------------|------------------|---|
| Immunohistochemistry (IHC) | 1-2ug/ml | 30 min at RT. Staining of formalin-fixed tissues requires heating tissue sections in 10mM Tris with 1mM EDTA, pH 9.0, for 45 min at 95°C followed by cooling at RT for 20 minutes |
| Western Blot (WB) | 2-4ug/ml | |

Product Details

| | |
|-------------------------------|---|
| Clone | IGEL/6850R |
| Gene Name | MS4A1 |
| Immunogen | A synthetic peptide from the C-terminus (cytoplasmic domain) of human CD20 protein (aa 266-297) |
| Host | Rabbit |
| Clonality | Monoclonal |
| Isotype / Light Chain | IgG / Kappa |
| Mol. Weight of Antigen | 33-37kDa |
| Cellular Localization | Cell membrane |
| Species Reactivity | Dog, Human |
| Positive Control | and U266, Daudi, or human lymphocytes. Human lymph node or tonsil., Raji |

*Optimal dilution for a specific application should be determined.

Product Images for Recombinant CD20 / MS4A1 (B-Cell Marker) Antibody



Formalin-fixed, paraffin-embedded human lymph node stained with CD20 Rabbit Recombinant Monoclonal Antibody (IGEL/6850R).



Western Blot Analysis of Raji cell lysate using CD20 Rabbit Recombinant Monoclonal Antibody (IGEL/6850R).

Specificity & Comments

Recognizes a protein of 30-33kDa, which is identified as CD20. It is a non-Ig differentiation antigen of B-cells and its expression is restricted to normal and neoplastic B-cells, being absent from all other leukocytes and tissues. CD20 is expressed by pre B-cells and persists during all stages of B-cell maturation but is lost upon terminal differentiation into plasma cells. This MAb can be used for immunophenotyping of leukemia and malignant cells, B lymphocyte detection in peripheral blood and B cell localization in tissues. It reacts with the majority of B-cells present in peripheral blood and lymphoid tissues and their derived lymphomas. In lymphoid tissue, germinal center blasts and B-immunoblasts are particularly reactive. It is a reliable antibody for ascribing a B-cell phenotype in known lymphoid tissues. Rarely, CD20-positive T-cell lymphomas have been reported. Reactivity has also been noted with Reed-Sternberg cells in cases of Hodgkin s disease, particularly of lymphocyte predominant type.

Limitations and Warranty

This antibody is available for research use only and is not approved for use in diagnosis. There are no warranties, expressed or implied, which extend beyond this description. Company is not liable for any personal injury or economic loss resulting from this product.

Supplied As

200ug/ml of Ab purified by Protein A Column. Prepared in 10mM PBS with 0.05% BSA & 0.05% azide. Also available WITHOUT BSA & azide at 1.0mg/ml.

Storage and Stability

Antibody with azide - store at 2 to 8 °C. Antibody without azide - store at -20 to -80 °C. Antibody is stable for 24 months. Non-hazardous. No MSDS required.

Research Areas

B Cell Markers, Hematopoietic Stem Cells
