

## Recombinant CD22 / BL-CAM (B-Cell Marker) Antibody

Rabbit Monoclonal Antibody [Clone BLCAM/2637R]

Catalog No	Format	Size
933-RBM7-P0	Purified Ab with BSA and Azide at 200ug/ml	20 ug
933-RBM7-P1	Purified Ab with BSA and Azide at 200ug/ml	100 ug
933-RBM7-P1ABX	Purified Ab WITHOUT BSA and Azide at 1.0mg/ml	100 ug

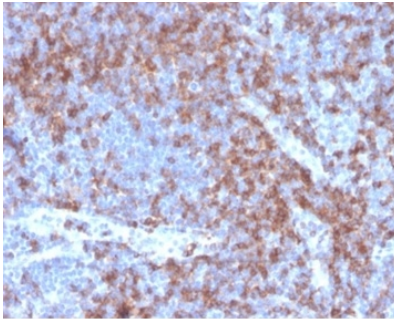
Applications	Tested Dillution	Note
Immunohistochemistry (IHC)	1-2ug/ml	30 min at RT. Staining of formalin-fixed tissues requires heating tissue sections in 10mM Tris with 1mM EDTA, pH 9.0, for 45 min at 95°C followed by cooling at RT for 20 minutes

### Product Details

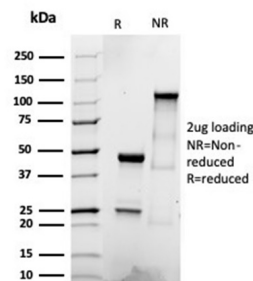
<b>Clone</b>	BLCAM/2637R
<b>Gene Name</b>	CD22
<b>Immunogen</b>	Recombinant fragment (around aa52-178) of human BL-CAM/CD22 protein (exact sequence is proprietary)
<b>Host</b>	Rabbit
<b>Clonality</b>	Monoclonal
<b>Isotype / Light Chain</b>	IgG / Kappa
<b>Mol. Weight of Antigen</b>	130-140kDa
<b>Cellular Localization</b>	Cell membrane
<b>Species Reactivity</b>	Human
<b>Positive Control</b>	lymph node or spleen., Raji cells or human peripheral blood lymphocytes (hPBL). Human tonsil

\*Optimal dilution for a specific application should be determined.

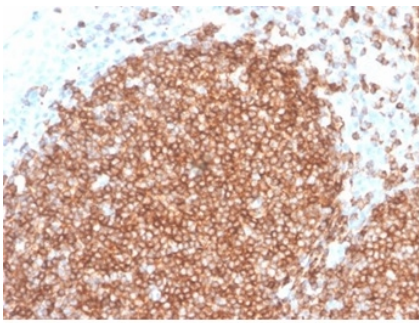
### Product Images for Recombinant CD22 / BL-CAM (B-Cell Marker) Antibody



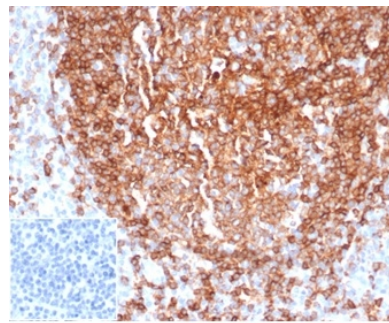
Formalin-fixed, paraffin-embedded human tonsil stained with CD22 Recombinant Rabbit Monoclonal Antibody (BLCAM/2637R).



SDS-PAGE Analysis of Purified CD22 Recombinant Rabbit Monoclonal Antibody (BLCAM/2637R). Confirmation of Integrity and Purity of Antibody.



Formalin-fixed, paraffin-embedded human tonsil stained with CD22 Recombinant Rabbit Monoclonal Antibody (BLCAM/2637R).



Formalin-fixed, paraffin-embedded human tonsil stained with CD22 Recombinant Rabbit Monoclonal Antibody (BLCAM/2637R). Inset: PBS instead of primary antibody, secondary control.

### Specificity & Comments

Recognizes a protein of 130-140kDa, identified as CD22 (also known as BL-CAM). CD22 expression is restricted to normal and neoplastic B cells and is absent from other haemopoietic cell types. In B-cell ontogeny, CD22 is first expressed in the cytoplasm of pro-B and pre-B cells, and on the surface as B cells mature to become IgD+. It is not expressed by plasma cells, CD22 is found highly expressed in follicular mantle and marginal zone B-cells, and while germinal center B-cells are relatively weak. CD22 is a member of the immunoglobulin superfamily and serves as an adhesion receptor for sialic acid-bearing ligands expressed on erythrocytes and all leukocyte classes. It also associates with tyrosine kinases and play a role in signal transduction and B-cell activation.

### Limitations and Warranty

This antibody is available for research use only and is not approved for diagnosis. There are no warranties, expressed or implied, which extend beyond this description. Company is not liable for any personal injury or economic loss resulting from this product.

### Supplied As

200ug/ml of Ab purified from Bioreactor Concentrate by Protein A/G. Prepared in 10mM PBS with 0.05% BSA & 0.05% azide. Also available WITHOUT BSA & azide at 1.0mg/ml.

### Storage and Stability

Antibody with azide - store at 2 to 8 °C. Antibody without azide - store at -20 to -80 °C. Antibody is stable for 24 months. Non-hazardous. No MSDS required.

### Research Areas

Cardiovascular, Immunology, B Cell Markers, Dendritic Cell Marker, Hematopoietic Stem Cells