

## CD80 (B7-1) Antibody

Mouse Monoclonal Antibody [Clone C80/1608]

Catalog No	Format	Size
941-MSM1-P0	Purified Ab with BSA and Azide at 200ug/ml	20 ug
941-MSM1-P1	Purified Ab with BSA and Azide at 200ug/ml	100 ug
941-MSM1-P1ABX	Purified Ab WITHOUT BSA and Azide at 1.0mg/ml	100 ug

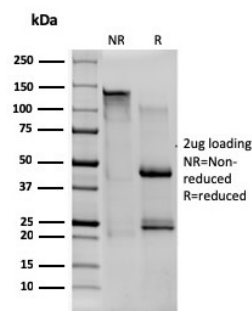
Applications	Tested Dillution	Note
--------------	------------------	------

### Product Details

<b>Clone</b>	C80/1608
<b>Gene Name</b>	CD80
<b>Immunogen</b>	Recombinant full-length human CD80 protein
<b>Host</b>	Mouse
<b>Clonality</b>	Monoclonal
<b>Isotype / Light Chain</b>	IgG1 / Kappa
<b>Mol. Weight of Antigen</b>	60kDa
<b>Cellular Localization</b>	Membrane
<b>Species Reactivity</b>	Human
<b>Positive Control</b>	Raji or Ramos cells. Tonsil, spleen or thymus.

\*Optimal dilution for a specific application should be determined.

### Product Images for CD80 (B7-1) Antibody



SDS-PAGE Analysis of Purified CD80 Mouse Monoclonal Antibody (C80/1608).  
Confirmation of Integrity and Purity of Antibody.

### Specificity & Comments

T cell proliferation and lymphokine production are triggered by occupation of the TCR by antigen, followed by a costimulatory signal that is delivered by a ligand expressed on antigen presenting cells. The B7-related cell surface proteins CD80 (B7-1) and CD86 (B7-2) are expressed on antigen presenting cells bind the homologous T cell receptors CTLA-4 (cytotoxic T lymphocyte-associated protein-4) and CD28 and trigger costimulatory signals for optimal T cell activation. CTLA-4 shares 31% overall amino acid identity with CD28 and it has been proposed that CD28 and CTLA-4 are functionally redundant. SLAM is a novel receptor on T cells that, when engaged, potentiates T cell expansion in a CD28-independent manner. B7, also designated BB1, is another ligand or counter receptor for CD28 and CTLA-4 that is expressed on the antigen-presenting cell.

### Limitations and Warranty

This antibody is available for research use only and is not approved for use in diagnosis. There are no warranties, expressed or implied, which extend beyond this description. Company is not liable for any personal injury or economic loss resulting from this product.

### Supplied As

200ug/ml of Ab Purified from Bioreactor Concentrate by Protein A/G. Prepared in 10mM PBS with 0.05% BSA & 0.05% azide. Also available WITHOUT BSA & azide at 1.0mg/ml.

### Storage and Stability

Antibody with azide - store at 2 to 8°C. Antibody without azide - store at -20 to -80°C. Antibody is stable for 24 months. Non-hazardous. No MSDS required.

### Research Areas

Cardiovascular, Immuno Oncology, Immunology, AKT Signaling, B Cell Markers, Cytokine Signaling, Hematopoietic Stem Cells, Immune checkpoint, Infectious Disease, Signal Transduction