

## CD34 (Hematopoietic Stem Cell & Endothelial Marker) Antibody

Mouse Monoclonal Antibody [Clone QBEnd/10 + HPCA1/763]

Catalog No	Format	Size
947-MSM4-P0	Purified Ab with BSA and Azide at 200ug/ml	20 ug
947-MSM4-P1	Purified Ab with BSA and Azide at 200ug/ml	100 ug
947-MSM4-P1ABX	Purified Ab WITHOUT BSA at 1.0mg/ml	100 ug

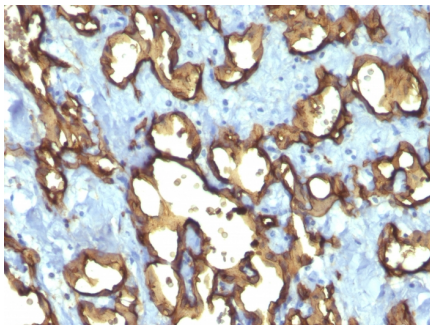
Applications	Tested Dillution	Note
Flow Cytometry (Flow)	1-2ug/million cells	
Immunofluorescence (IF)	1-3ug/ml	
Immunohistochemistry (IHC)	1-2ug/ml	30 min at RT. Staining of formalin-fixed tissues requires heating tissue sections in 10mM Tris with 1mM EDTA, pH 9.0, for 45 min at 95°C followed by cooling at RT for 20 minutes

### Product Details

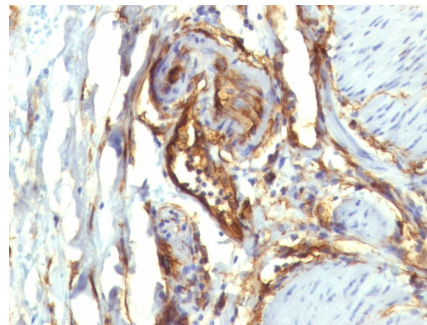
<b>Clone</b>	QBEnd/10 + HPCA1/763
<b>Gene Name</b>	CD34
<b>Immunogen</b>	Detergent solubilized vesicular suspension prepared from human term placenta (QBEnd/10); Recombinant full-length human HPCA1 protein (HPCA1/763)
<b>Host</b>	Mouse
<b>Clonality</b>	Monoclonal
<b>Isotype / Light Chain</b>	IgG1 / Lambda
<b>Mol. Weight of Antigen</b>	90-110kDa
<b>Cellular Localization</b>	Membrane
<b>Species Reactivity</b>	Human
<b>Positive Control</b>	KG-1 cells. Human tonsil or angiosarcoma.

*\*Optimal dilution for a specific application should be determined.*

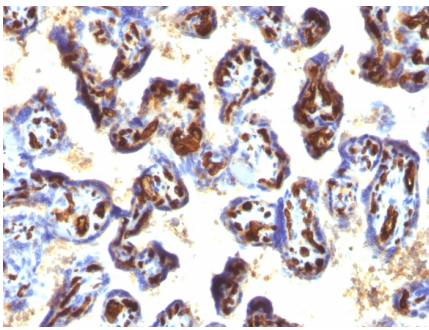
### Product Images for CD34 (Hematopoietic Stem Cell & Endothelial Marker) Antibody



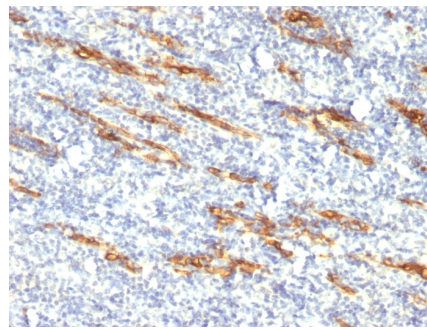
Formalin-fixed, paraffin-embedded human Angiosarcoma stained with CD34 Monoclonal Antibody (QBEnd/10 + HPCA1/763)



Formalin-fixed, paraffin-embedded human Colon Carcinoma stained with CD34 Monoclonal Antibody (QBEnd/10 + HPCA1/763)



Formalin-fixed, paraffin-embedded human Placenta stained with CD34 MAb (QBEnd/10 + HPCA1/763)



Formalin-fixed, paraffin-embedded human Tonsil stained with CD34 Monoclonal Antibody (QBEnd/10 + HPCA1/763)

### Specificity & Comments

This MAb recognizes a single chain, transmembrane, heavily glycosylated protein of 90-120kDa, which is identified as CD34. Its expression is a hallmark for identifying pluripotent hematopoietic stem or progenitor cells. Its expression is gradually lost as lineage committed progenitors differentiate. CD34 is a marker of choice for staining blasts in acute myeloid leukemia. In addition, CD34 is expressed by soft tissue tumors, such as solitary fibrous tumor and gastrointestinal stromal tumor. Its expression is also found in vascular endothelium. Additionally, it appears that proliferating endothelial cells express this molecule more than the non-proliferating endothelial cells. Anti-CD34 labels 85% of angiosarcoma and Kaposi's sarcoma, but with a lower specificity.

### Limitations and Warranty

This antibody is available for research use only and is not approved for use in diagnosis. There are no warranties, expressed or implied, which extend beyond this description. Company is not liable for any personal injury or economic loss resulting from this product.

### Supplied As

200ug/ml of Ab Purified from Bioreactor Concentrate by Protein A/G. Prepared in 10mM PBS with 0.05% BSA & 0.05% azide. Also available WITHOUT BSA at 1.0mg/ml.

### Storage and Stability

Antibody with azide - store at 2 to 8°C. Antibody is stable for 24 months. Non-hazardous. No MSDS required.

### Research Areas

Hypoxia, Immunology, Endothelial Cell Marker, Hematopoietic Stem Cells, Mesenchymal Stem Cell Differentiation