

## Recombinant ATG5 (Autophagy Marker) Antibody

Rabbit Monoclonal Antibody [Clone AGT5/3220R]

Catalog No	Format	Size
9474-RBM5-P0	Purified Ab with BSA and Azide at 200ug/ml	20 ug
9474-RBM5-P1	Purified Ab with BSA and Azide at 200ug/ml	100 ug
9474-RBM5-P1ABX	Purified Ab WITHOUT BSA and Azide at 1.0mg/ml	100 ug

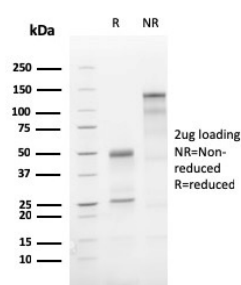
Applications	Tested Dillution	Note
--------------	------------------	------

### Product Details

<b>Clone</b>	AGT5/3220R
<b>Gene Name</b>	ATG5
<b>Immunogen</b>	Recombinant fragment of human ATG5 protein (around aa 1-119) (exact sequence is proprietary)
<b>Host</b>	Rabbit
<b>Clonality</b>	Monoclonal
<b>Isotype / Light Chain</b>	IgG / Kappa
<b>Mol. Weight of Antigen</b>	32kDa
<b>Cellular Localization</b>	Cytoplasm, Preautophagosomal structure membrane
<b>Species Reactivity</b>	Human
<b>Positive Control</b>	A431, Colon or Duodenum., Endometrium, K562, PANC-1, Raji or HeLa cells. Ovary, THP-1, U-87

\*Optimal dilution for a specific application should be determined.

### Product Images for Recombinant ATG5 (Autophagy Marker) Antibody



SDS-PAGE Analysis of Purified ATG5 Recombinant Rabbit Monoclonal Antibody (AGT5/3220R). Confirmation of Purity and Integrity of Antibody.

### Specificity & Comments

The protein encoded by this gene, in combination with autophagy protein 12, functions as an E1-like activating enzyme in a ubiquitin-like conjugating system. The encoded protein is involved in several cellular processes, including autophagic vesicle formation, mitochondrial quality control after oxidative damage, negative regulation of the innate antiviral immune response, lymphocyte development and proliferation, MHC II antigen presentation, adipocyte differentiation, and apoptosis. The ATG5 protein is essential for autophagy; a process that is usually beneficial for cells to self-degrade their own components when they are no longer useful.

### Limitations and Warranty

This antibody is available for research use only and is not approved for use in diagnosis. There are no warranties, expressed or implied, which extend beyond this description. Company is not liable for any personal injury or economic loss resulting from this product.

### Supplied As

200ug/ml of Ab Purified from Bioreactor Concentrate by Protein A/G. Prepared in 10mM PBS with 0.05% BSA & 0.05% azide. Also available WITHOUT BSA & azide at 1.0mg/ml.

### Storage and Stability

Antibody with azide - store at 2 to 8°C. Antibody without azide - store at -20 to -80°C. Antibody is stable for 24 months. Non-hazardous. No MSDS required.

### Research Areas

Immunology