

Recombinant Napsin A (Lung Adenocarcinoma Marker) Antibody

Mouse Monoclonal Antibody [Clone rNAPSA/1239]

Catalog No	Format	Size
9476-MSM6-P0	Purified Ab with BSA and Azide at 200ug/ml	20 ug
9476-MSM6-P1	Purified Ab with BSA and Azide at 200ug/ml	100 ug
9476-MSM6-P1ABX	Purified Ab WITHOUT BSA at 1.0mg/ml	100 ug

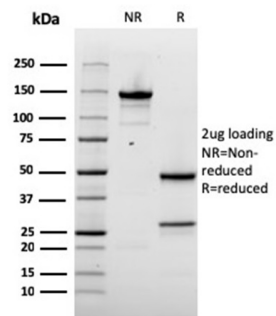
Applications	Tested Dillution	Note
Immunohistochemistry (IHC)	1-2ug/ml	30 min at RT. Staining of formalin-fixed tissues requires heating tissue sections in 10mM Tris with 1mM EDTA, pH 9.0, for 45 min at 95°C followed by cooling at RT for 20 minutes
Western Blot (WB)	2-4ug/ml	

Product Details

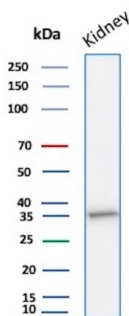
Clone	rNAPSA/1239
Gene Name	NAPSA
Immunogen	Recombinant human Napsin-A protein fragment (aa 189-299) (exact sequence is proprietary)
Host	Mouse
Clonality	Monoclonal
Isotype / Light Chain	IgG1 / Kappa
Mol. Weight of Antigen	37kDa
Cellular Localization	Secreted
Species Reactivity	Human
Positive Control	Lung adenocarcinoma, Human Kidney

*Optimal dilution for a specific application should be determined.

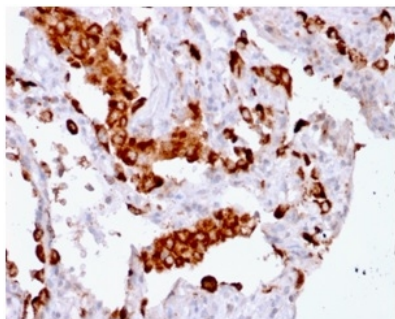
Product Images for Recombinant Napsin A (Lung Adenocarcinoma Marker) Antibody



SDS-PAGE Analysis of Purified Napsin A Mouse Monoclonal Antibody (rNAPSA/1239). Confirmation of Integrity and Purity of Antibody.



Western Blot Analysis of Human Kidney lysate using Napsin-A Mouse Recombinant Monoclonal Antibody (rNAPSA/1239).



Formalin-fixed, paraffin-embedded human Lung Adenocarcinoma stained with Napsin A Mouse Recombinant Monoclonal Antibody (rNAPSA/1239).

Specificity & Comments

Napsin is a pepsin-like aspartic proteinase connected with maturation of surfactant protein B. There are two closely related napsins, napsin A and napsin B. Napsin A is expressed as a single chain protein. Immunohistochemical studies revealed high expression levels of napsin A in human lung and kidney but low expression in spleen. Napsin A is expressed in type II pneumocytes and in adenocarcinomas of lung. The high specificity expression of napsin A in adenocarcinomas of lung is useful to distinguish primary lung adenocarcinomas from adenocarcinomas of other organs.

Limitations and Warranty

This antibody is available for research use only and is not approved for use in diagnosis. There are no warranties, expressed or implied, which extend beyond this description. Company is not liable for any personal injury or economic loss resulting from this product.

Supplied As

200ug/ml of Ab Purified from rabbit anti-serum by Protein A. Prepared in 10mM PBS with 0.05% BSA & 0.05% azide. Also available WITHOUT BSA at 1.0mg/ml.

Storage and Stability

Antibody with azide - store at 2 to 8°C. Antibody without azide - store at -20 to -80°C. Antibody is stable for 24 months. Non-hazardous. No MSDS required.

Research Areas

Dendritic Cell Marker
