

CD38 (ADP Ribosyl Cyclase I) Antibody

Mouse Monoclonal Antibody [Clone AT2]

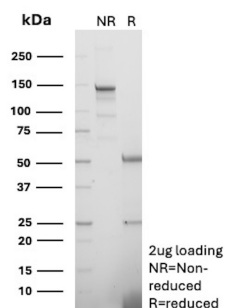
Catalog No	Format	Size
952-MSM5-P0	Purified Ab with BSA and Azide at 200ug/ml	20 ug
952-MSM5-P1	Purified Ab with BSA and Azide at 200ug/ml	100 ug
952-MSM5-P1ABX	Purified Ab WITHOUT BSA and Azide at 1.0mg/ml	100 ug

Applications	Tested Dillution	Note
Flow Cytometry (Flow)	1-2ug/million cells	
Immunofluorescence (IF)	1-3ug/ml	

Product Details	
Clone	AT2
Gene Name	CD38
Immunogen	Human T cell line CCRF-CEM
Host	Mouse
Clonality	Monoclonal
Isotype / Light Chain	IgG3 / Kappa
Mol. Weight of Antigen	~45kDa (Glycoprotein); 35kDa (protein core)
Cellular Localization	Membrane
Species Reactivity	Human
Positive Control	CCRF-CEM cells, Spleen or Skin., Tonsil

*Optimal dilution for a specific application should be determined.

Product Images for CD38 (ADP Ribosyl Cyclase I) Antibody



SDS-PAGE Analysis of Purified CD38 Mouse Monoclonal Antibody (AT-2).
Confirmation of Purity and Integrity of Antibody.

Specificity & Comments

This MAbs reacts with a 45kDa glycopeptide, which is a type II membrane glycoprotein with a transmembrane sequence near the NH2terminus. CD38 is a type II transmembrane glycoprotein that is present on early B- and T-cell lineages and activated B- and T-cells but is absent from most mature resting peripheral lymphocytes. CD38 is also found on thymocytes, pre-B cells, germinal center B-cells, mitogen-activated T-cells, monocytes and Ig-secreting plasma cells. CD38 is expressed on CD34+ cells. The CD34+CD38- population of hematopoietic stems cells defines the most pluripotent cells (e.g. blast colony forming cells).

Limitations and Warranty

This antibody is available for research use only and is not approved for use in diagnosis. There are no warranties, expressed or implied, which extend beyond this description. Company is not liable for any personal injury or economic loss resulting from this product.

Supplied As

0.5 ml at 200 ?g/ml of antibody Purified from Bioreactor Concentrate by Protein A/G chromatography. Supplied in 10mM PBS, pH 7.4 with 0.05% BSA and 0.05% sodium azide. Contact us if you require this antibody in a different format.

Storage and Stability

Store at 2 to 8°C. Antibody is stable for 24 months.

Research Areas

Hypoxia, B Cell Markers, Hematopoietic Stem Cells