

## CD48 (Pan Leukocyte Marker) Antibody

Mouse Monoclonal Antibody [Clone CD48/4787]

Catalog No	Format	Size
962-MSM7-P0	Purified Ab with BSA and Azide at 200ug/ml	20 ug
962-MSM7-P1	Purified Ab with BSA and Azide at 200ug/ml	100 ug
962-MSM7-P1ABX	Purified Ab WITHOUT BSA and Azide at 1.0mg/ml	100 ug

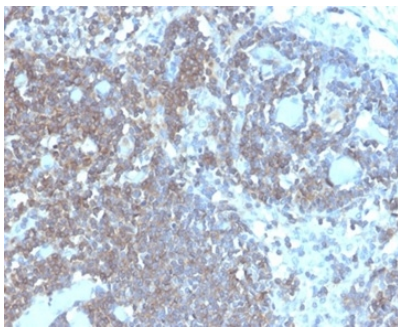
Applications	Tested Dillution	Note
Immunohistochemistry (IHC)	1-2ug/ml	30 min at RT. Staining of formalin-fixed tissues requires heating tissue sections in 10mM Tris with 1mM EDTA, pH 9.0, for 45 min at 95°C followed by cooling at RT for 20 minutes
Western Blot (WB)	2-4ug/ml	

### Product Details

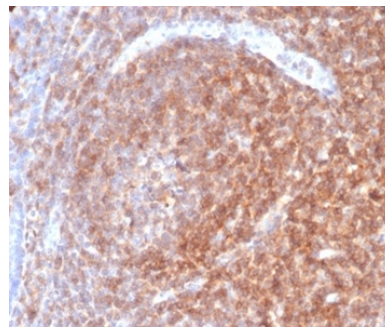
<b>Clone</b>	CD48/4787
<b>Gene Name</b>	CD48
<b>Immunogen</b>	Recombinant fragment (around aa 59-178) of human CD48 protein (exact sequence is proprietary)
<b>Host</b>	Mouse
<b>Clonality</b>	Monoclonal
<b>Isotype / Light Chain</b>	IgG2c / Kappa
<b>Mol. Weight of Antigen</b>	45kDa
<b>Cellular Localization</b>	Cell membrane, Secreted
<b>Species Reactivity</b>	Human
<b>Positive Control</b>	Raji cells. Human lymph node or tonsil.

*\*Optimal dilution for a specific application should be determined.*

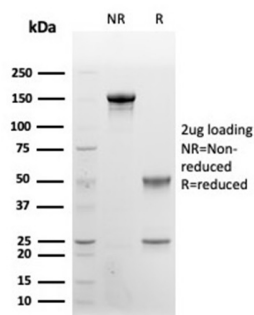
### Product Images for CD48 (Pan Leukocyte Marker) Antibody



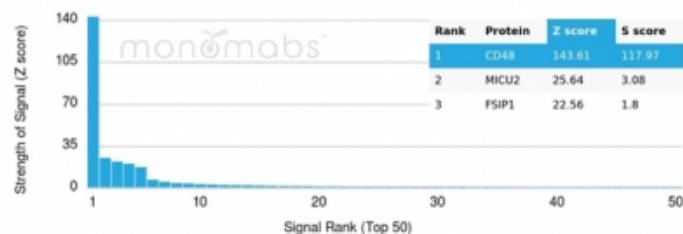
Formalin-fixed, paraffin-embedded human lymph node stained with CD48 Monospecific Mouse Monoclonal Antibody (CD48/4787).



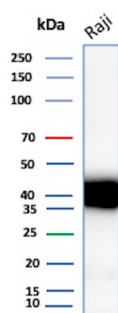
Formalin-fixed, paraffin-embedded human lymph node stained with CD48 Monospecific Mouse Monoclonal Antibody (CD48/4787).



SDS-PAGE Analysis of Purified CD48 Monospecific Mouse Monoclonal Antibody (CD48/4787). Confirmation of Purity and Integrity of Antibody.



Analysis of Protein Array containing more than 19,000 full-length human proteins using Monospecific Mouse Monoclonal Antibody to CD48 (CD48/4787). Z- and S- Score: The Z-score represents the strength of a signal that a monoclonal antibody (MAb) (in combination with a fluorescently-tagged anti-IgG secondary antibody) produces when binding to a particular protein on the HuProt™ array. Z-scores are described in units of standard deviations (SD's) above the mean value of all signals generated on that array. If targets on HuProt™ are arranged in descending order of the Z-score, the S-score is the difference (also in units of SD's) between the Z-score. S-score therefore represents the relative target specificity of a MAb to its intended target. A MAb is considered to specific to its intended target, if the MAb has an S-score of at least 2.5. For example, if a MAb binds to protein X with a Z-score of 43 and to protein Y with a Z-score of 14, then the S-score for the binding of that MAb to protein X is equal to 29.



Western blot analysis of Raji cell lysate using CD48 Monospecific Mouse Monoclonal Antibody (CD48/4787).

### Specificity & Comments

Reacts with human CD48, a 45kDa glycosyl phosphatidyl-inositol (GPI)-anchored cell surface protein. CD48 is strongly expressed on lymphocytes and monocytes and weakly on granulocytes but is absent on platelets, fibroblasts, epithelium and endothelium. CD48 is one of marker for detecting the defects of GPI anchoring structure on the patients with paroxysmal nocturnal hemoglobinuria (PNH) and serves as a low affinity ligand for CD2.

### Supplied As

200ug/ml of Ab purified from Bioreactor Concentrate by Protein A/G. Prepared in 10mM PBS with 0.05% BSA & 0.05% azide. Also available WITHOUT BSA & azide at 1.0mg/ml.

### Storage and Stability

Antibody with azide - store at 2 to 8 °C. Antibody without azide - store at -20 to -80 °C. Antibody is stable for 24 months. Non-hazardous. No MSDS required.

### Research Areas

Cardiovascular, Hematopoietic Stem Cells, Immune checkpoint

### Limitations and Warranty

This antibody is available for research use only and is not approved for diagnosis. There are no warranties, expressed or implied, which extend beyond this description. Company is not liable for any personal injury or economic loss resulting from this product.