

## Recombinant CD59 / Complement Regulatory Protein / Protectin Antibody

Rabbit Monoclonal Antibody [Clone MACIF/2867R]

Catalog No	Format	Size
966-RBM5-P0	Purified Ab with BSA and Azide at 200ug/ml	20 ug
966-RBM5-P1	Purified Ab with BSA and Azide at 200ug/ml	100 ug
966-RBM5-P1ABX	Purified Ab WITHOUT BSA and Azide at 1.0mg/ml	100 ug

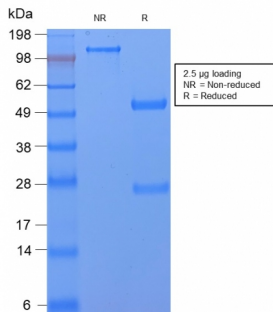
Applications	Tested Dillution	Note
Immunohistochemistry (IHC)	1-2ug/ml	30 min at RT. Staining of formalin-fixed tissues requires heating tissue sections in 10mM Tris with 1mM EDTA, pH 9.0, for 45 min at 95°C followed by cooling at RT for 20 minutes

### Product Details

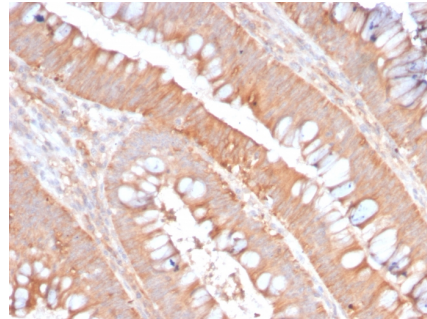
<b>Clone</b>	MACIF/2867R
<b>Gene Name</b>	CD59
<b>Immunogen</b>	Recombinant human full-length CD59 protein
<b>Host</b>	Rabbit
<b>Clonality</b>	Monoclonal
<b>Isotype / Light Chain</b>	IgG / Kappa
<b>Mol. Weight of Antigen</b>	20kDa
<b>Cellular Localization</b>	Cell membrane, Secreted
<b>Species Reactivity</b>	Human
<b>Positive Control</b>	Jurkat or Raji cells. Human lymphocytes. Human lymph node and tonsil.

\*Optimal dilution for a specific application should be determined.

### Product Images for Recombinant CD59 / Complement Regulatory Protein / Protectin Antibody



SDS-PAGE Analysis of Purified CD59 Rabbit Recombinant Monoclonal Antibody (MACIF/2867R). Confirmation of Purity and Integrity of Antibody.



Formalin-fixed, paraffin-embedded human Colon Carcinoma stained with CD59 Rabbit Recombinant Monoclonal Antibody (MACIF/2867R).

**Specificity & Comments**

Reacts with human CD59, a 20kDa glycosyl phosphatidyl-inositol (GPI)-anchored cell surface protein (Workshop VI; Code N-L036). CD59 regulates complement-mediated cell lysis, and it is involved in lymphocyte signal transduction. This protein is a potent inhibitor of the complement membrane attack complex, whereby it binds complement C8 and/or C9 during the assembly of this complex, thereby inhibiting the incorporation of multiple copies of C9 into the complex, which is necessary for osmolytic pore formation. CD59 is widely distributed on cells in all tissues. It inhibits formation of MAC, thus protecting cells from complement-mediated lysis. The expression of CD59 on erythrocytes is important for their survival. Genetic defects in GPI-anchor attachment, that cause a reduction or loss of CD59 and CD55 on erythrocytes produce the symptoms of the disease paroxysmal hemoglobinuria (PNH). This MAb recognizes CD59 transfected cells. It is useful for study on GPI-anchored proteins, PNH and CD59 functions.

---

**Limitations and Warranty**

This antibody is available for research use only and is not approved for use in diagnosis. There are no warranties, expressed or implied, which extend beyond this description. Company is not liable for any personal injury or economic loss resulting from this product.

---

**Supplied As**

200ug/ml of Ab Purified by Protein A. Prepared in 10mM PBS with 0.05% BSA & 0.05% azide. Also available WITHOUT BSA & azide at 1.0mg/ml.

---

**Storage and Stability**

Antibody with azide - store at 2 to 8°C. Antibody without azide - store at -20 to -80°C. Antibody is stable for 24 months. Non-hazardous. No MSDS required.

---

**Research Areas**

Immunology, Complement System, Hematopoietic Stem Cells

---