

Cdk1 / p34cdc2 Antibody

Mouse Monoclonal Antibody [Clone POH-1; same as cdc2.1]

Catalog No	Format	Size
983-MSM1-P0	Purified Ab with BSA and Azide at 200ug/ml	20 ug
983-MSM1-P1	Purified Ab with BSA and Azide at 200ug/ml	100 ug
983-MSM1-P1ABX	Purified Ab WITHOUT BSA and Azide at 1.0mg/ml	100 ug

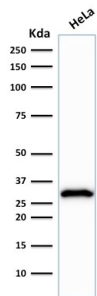
Applications	Tested Dillution	Note
Immunohistochemistry (IHC)	1-2ug/ml	30 min at RT. Staining of formalin-fixed tissues requires heating tissue sections in 10mM Tris with 1mM EDTA, pH 9.0, for 45 min at 95°C followed by cooling at RT for 20 minutes
Western Blot (WB)	2-4ug/ml	

Product Details

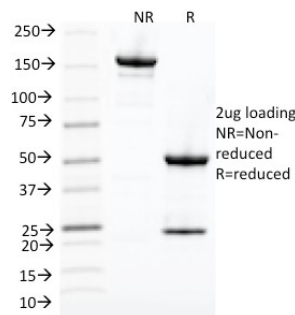
Clone	POH-1; same as cdc2.1
Gene Name	CDK1
Immunogen	Recombinant full-length human p34cdc2 protein
Host	Mouse
Clonality	Monoclonal
Isotype / Light Chain	IgG2a / Kappa
Mol. Weight of Antigen	34kDa
Cellular Localization	Centrosome, Cytoplasm, Cytoskeleton, Microtubule organizing center, Mitochondrion, Nucleus, Spindle
Species Reactivity	Cow, Human, Mink, Monkey
Positive Control	HeLa or MCF-7 cells. Tonsil.

*Optimal dilution for a specific application should be determined.

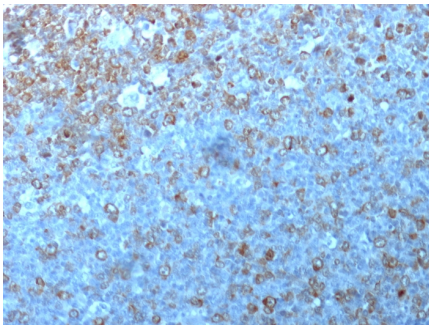
Product Images for Cdk1 / p34cdc2 Antibody



Western Blot Analysis of human HeLa cell lysate using Cdk1 Mouse Monoclonal Antibody (POH-1).



SDS-PAGE Analysis of Purified Cdk1 Mouse Monoclonal Antibody (POH-1). Confirmation of Integrity and Purity of Antibody



Formalin-fixed, paraffin-embedded human Tonsil stained with Cdk1 Mouse Monoclonal Antibody (POH-1).

Specificity & Comments

Recognizes a 34kDa protein, which is identified as cyclin dependent kinase 1 (cdk1) or p34cdc2 protein kinase. cdk1 / p34cdc2 plays a crucial role during cell division and is most active during mitosis. It is predominantly localized in the nucleus. It is a serine/threonine kinase, which is activated by cyclin, presumably by de-phosphorylation of tyrosine residues. Activated cdk1 / p34cdc2 performs specific functions during mitosis, including nuclear envelope breakdown and chromosome condensation.

Limitations and Warranty

This antibody is available for research use only and is not approved for use in diagnosis. There are no warranties, expressed or implied, which extend beyond this description. Company is not liable for any personal injury or economic loss resulting from this product.

Supplied As

200ug/ml of Ab Purified from Bioreactor Concentrate by Protein A/G. Prepared in 10mM PBS with 0.05% BSA & 0.05% azide. Also available WITHOUT BSA & azide at 1.0mg/ml.

Storage and Stability

Antibody with azide - store at 2 to 8°C. Antibody without azide - store at -20 to -80°C. Antibody is stable for 24 months. Non-hazardous. No MSDS required.

Research Areas

Ovarian Cancer, Signal Transduction, Transcription Factors
